

## GENERAL

For the last leg of the tour, you will depart from *Jersey* to *Innsbruck*.

The maximum aircraft category is : Cat C.

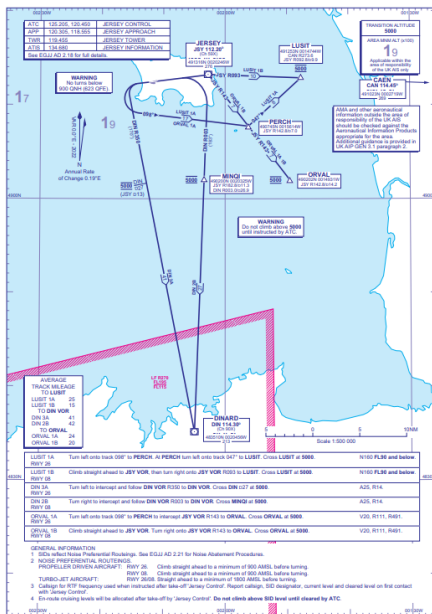
It is an IFR flight, with the following route :

- **F270-F410 ORVAL DCT EKRAS UN491 LGL UN491 LUVAL DCT BEGAR  
DCT TRA DCT GAMSA N871 MADEB N606 ELMEM**

Link to eAIP : <https://nats-uk.ead-it.com/cms-nats/opencms/en/Publications/AIP/>

## DEPARTURE

The procedure proposed for departure is : **ORVAL 1A** or **ORVAL 1B** out of runway 08 or 26.





## GENERAL

*Innsbruck is a particularly dangerous Austrian airport with the presence of high mountainous terrain around the airport making departures and arrivals tricky.*

Link to eAIP : <https://eaip.austrocontrol.at/>

## ARRIVAL

The procedure imposed on arrival is : **ELMEM 1A – LOC DME EAST + MVL** on runway 08.

