

## GENERAL

For the nineteenth leg of the tour, you will depart from *Samedan* to reach *Jersey*.

The maximum aircraft category is : Cat C.

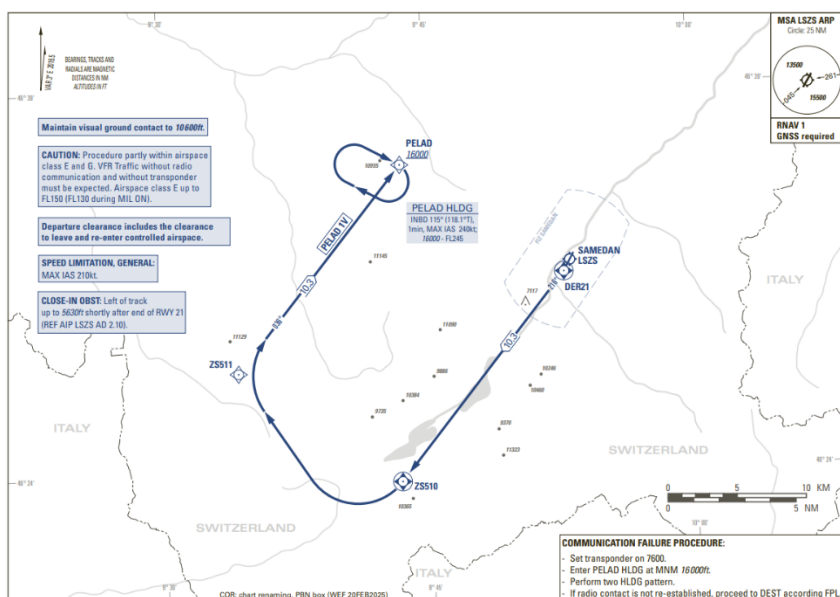
It is an IFR flight, with the following route :

- **F220-F360 PELAD Z50 SOPER N851 ELMUR L613 HOC DCT LUL DCT RLP UL613 ROTSI UM164 TRO UM729 RESMI UN491 LGL UN502 ARGED H490 SENLO G274 BEVAV**

Link to eAIP : <https://www.skybriefing.com/fr>

## DEPARTURE

The procedure proposed at the start is : **PELAD IV** out of runway 21.



## GENERAL

Jersey is an *English* airport located on the *Channel Islands*, the short runway and strong winds do not favors landings.

Link to eAIP : <https://nats-uk.ead-it.com/cms-nats/opencms/en/Publications/AIP/>

## ARRIVAL

The procedure imposed on arrival is : **BEVAV 1K or BEVAV 1J – NDB ILS DME or VOR ILS DME** on runway 08 or 26.

