

GENERAL

For the sixteenth leg of the tour, you will depart from *Almería* to reach *Nice*.

The maximum aircraft category is : Cat C.

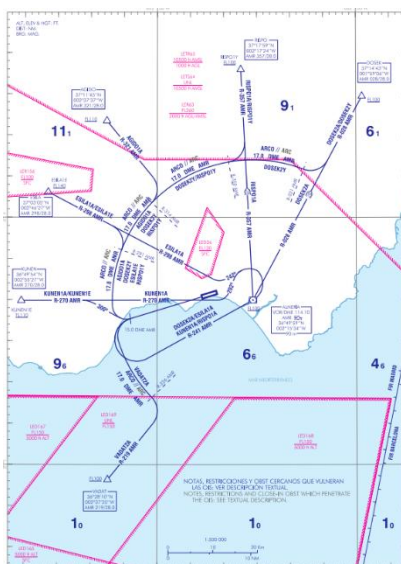
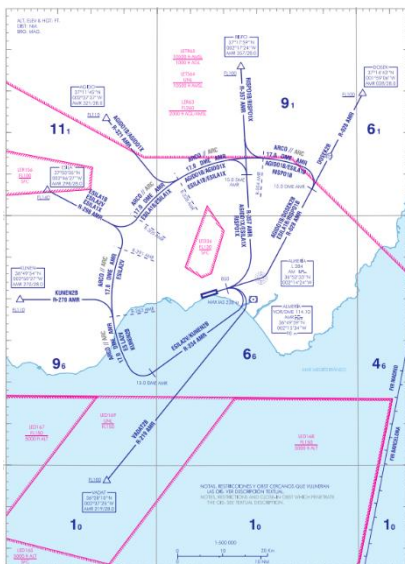
It is an IFR flight, with the following route :

- **F200-F340 DOSEK N860 BEGOX M445 SOPET M985 BCN N870 DIBER DCT SOSUR DCT SOFFY UM976 MRM UY122 ABLAK**

Link to eAIP : <https://aip.enaire.es/aip/aip-en.html>

DEPARTURE

The procedure proposed for departure is : **DOSEK 2B** or **DOSEK 2A** out of runway 07 or 25.



GENERAL

Nice is a *French* airport located on the Mediterranean Sea, the main approach used is the VPT to reach the final axis.

Link to eAIP : <https://www.sia.aviation-civile.gouv.fr/>

ARRIVAL

The procedure imposed on arrival is : **ABLAK 7R – RNP A or RNP D + VPT** on runway 04L or 22R.

