

GENERAL

For the fourteenth leg of the tour, you will depart from *Gibraltar* to reach *Melilla*.

The maximum aircraft category is : Cat B.

It is an IFR flight, with the following route :

- **F160-F400 PIMOS M985 MGA/NXXXXF170-F410 N493 BERUM**

Link to eAIP: <https://www.gibraltar.gov.gi/civil-aviation/gibraltar-aeronautical-information-publication>

DEPARTURE

There is no SID on *Gibraltar*, so you will have to make an omnidirectional departure.



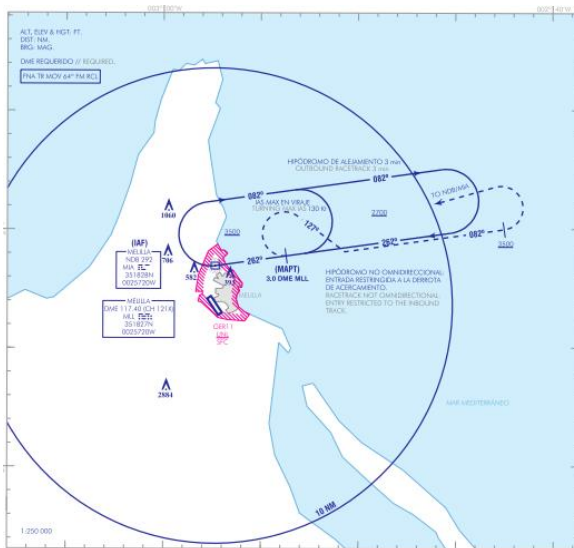
GENERAL

Melilla is a Spanish airport located in a landlocked territory in Morocco.

Link to eAIP: <https://aip.enaire.es/aip/aip-en.html>

ARRIVAL

The procedure imposed on arrival is : **NDB B** on runway 15 or 33.



FRONTONIA: VISAR TAN PRONTO SEA POSIBLE A LA DERECHA A RUMBO MAGNETICO 127° (45° MAG 130° ML) PARA SEGUIR MARCACION MAGNETICA 082° NOROCCIDENTAL, SUBIENDO A 3000 FT Y REGRESAR AL MAB (MABT) 3.0 DME MSL. TO FOLLOW MAGNETIC BEARING 082° NORTHWEST, CLIMBING TO 3000 AND RETURNING TO (MAB) MELILLA 3.0 DME MSL.

NOTAS: (MABT) 3.0 DME MSL. TO FOLLOW MAGNETIC BEARING 082° NORTHWEST, CLIMBING TO 3000 AND RETURNING TO (MAB) MELILLA 3.0 DME MSL.

• SÓLO USABLE SI HAY CONDICIONES VMC A PARTIR DEL MABT POR DEBAJO DE OCA/N.

• ANTES DE ROT 127 EN COORDENADAS APROXIMADAS 30°38'N 002°34'W.

• VALORES DE RUIDO SUPERIORES AL MÍNIMO ESTABLECIDO POR OCA/N EN EL TRAMO DE ACERCAMIENTO DE LA APROXIMACIÓN FINAL.

• ONLY USABLE WITH VMC CONDITIONS FROM MABT AND BELOW THE OCA/N.

• NOT TO EXCEED MAXIMUM APPROACH COORDINATES 30°38'N 002°34'W.

• NOISE VALUES HIGHER THAN THE ICAO MINIMUM IN THE INBOUND LEG OF THE FINAL APPROACH.

