

GENERAL

For the thirteenth leg of the tour, you will depart from *Basel-Mulhouse* to reach *Gibraltar*.

The maximum aircraft category is : Cat C.

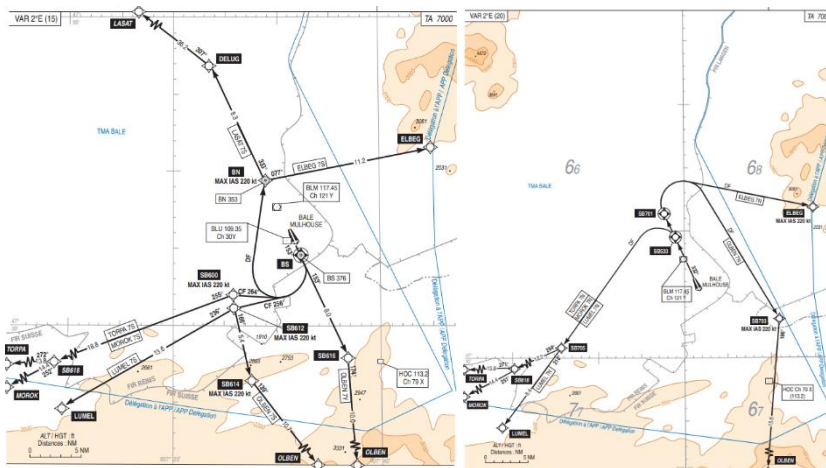
It is an IFR flight, with the following route :

- **F250-F330 OLBEN Z50 ROTOS Z669 VADAR DCT GEVEA DCT INCUS
DCT BALSI UN852 KOTIT/NXXXXXF250-F410 UN852 VATIR N852
PIVUS Z237 OKITI M603 ALT N851 MGA N869 PIMOS**

Link to eAIP : <https://www.sia.aviation-civile.gouv.fr/>

DEPARTURE

The procedure proposed at the start is : **OLBEN 7S** or **OLBEN 7N** of runway 15 or 33.





GENERAL

Gibraltar is a *British* airport, the big rock next to the runway favours strong crosswinds, and its short runway makes it a particularly dangerous airport.

Link to eAIP: <https://www.gibraltar.gov.gi/civil-aviation/gibraltar-aeronautical-information-publication>

ARRIVAL

The procedure imposed on arrival is : **PIMOS (CIV) – SRA (CIV)** on runway 09 or 27.

