

GENERAL

For the twelfth leg of the tour, you will leave London City to reach Basel-Mulhouse.

The maximum aircraft category is : Cat C.

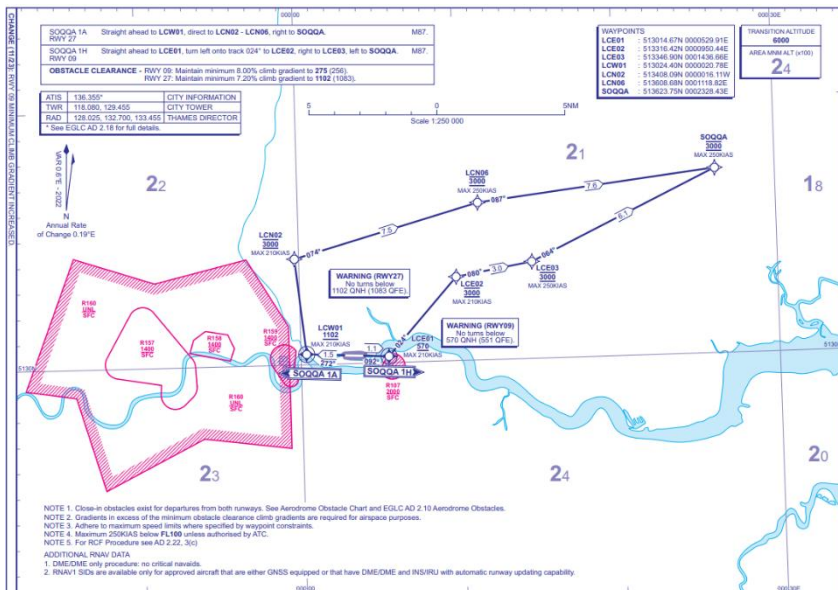
It is an IFR flight, with the following route :

- **F210-F330 SOQQA M87 UMTUM UL9 KONAN UL607 REMBA M624 DIK N852 SUTAL DCT GTQ DCT POGOL DCT LASAT A242 ARPUS**

Link to eAIP: <https://nats-uk.ead-it.com/cms-nats/opencms/en/Publications/AIP/>

DEPARTURE

The proposed departure procedure is : **SOQQA 1H** or **SOQQA 1A** for Runway 09 or 27.



GENERAL

Basel-Mulhouse is a French-Swiss-German airport, located in France, the crossed runways present interesting visual approaches.

Link to eAIP: <https://www.sia.aviation-civile.gouv.fr/>

ARRIVAL

The procedure imposed on arrival was : **ARPUS 8K – ILS Y + VPT B** on runway 25.

