

## GENERAL

For the eleventh leg of the tour, you will depart from Vágar and head to London City.

The maximum aircraft category is : Cat C.

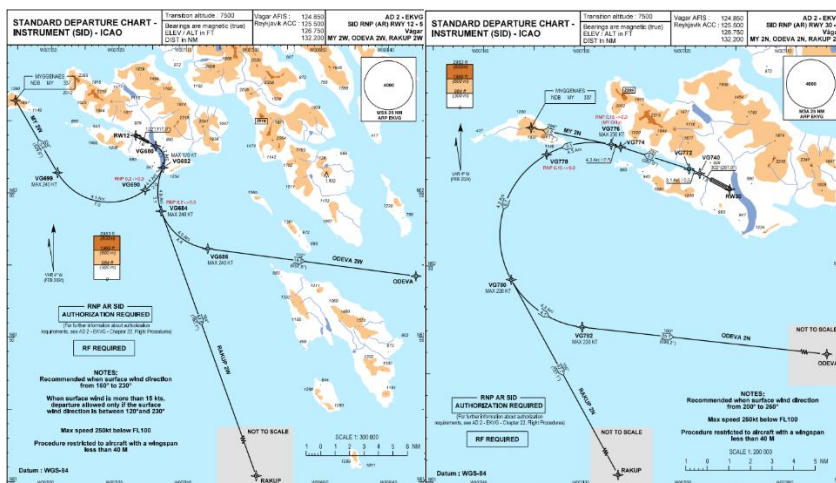
It is an IFR flight, with the following route :

– **F270–F410 ODEVA DCT NALAN DCT ELBUS UL612 LISTO**

Link to eAIP: <https://aim.naviair.dk/en/>

## DEPARTURE

The proposed procedure for departure is : **ODEVA 2W** or **ODEVA 2N** out of runway 12 or 30.





## London City

## Dangerous Tour 2025

Division IVAO France

LEG N°11

EKVG – EGLC

## GENERAL

London City is an *English* airport, located right in the center of the city, surrounded by tall buildings, this airport is particularly famous for its steep glide path.

Link to eAIP : <https://nats-uk.ead-it.com/cms-nats/opencms/en/Publications/AIP/>

## ARRIVAL

The procedure imposed on arrival is : **LISTO 1C – NDB ILS DME** on runway 09 or 27.

