

GENERAL

For the sixth leg of the tour, you will depart from *Tivat* and travel to *Zurich*.

The maximum aircraft category is : Cat C.

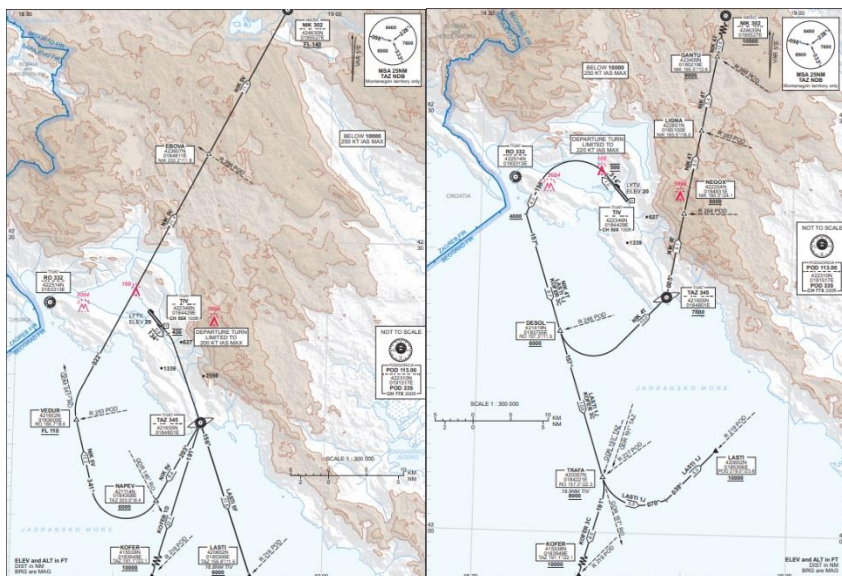
It is an IFR flight, with the following route :

- **F220-400 NIK DCT GACMO DCT EVAXI/NXXXXF120-F300 DCT ERKIR L608 KPT L856 NEGRA**

Link to eAIP: <https://smatsa.rs/en/aip/>

DEPARTURE

The procedure imposed at departure is : **NIK 5V** or **NIK 4T** of runway 14 or 32.



GENERAL

Zurich is a *Swiss airport*, one of the most important in the country, serving as a hub to reach other national airports.

Link to eAIP : <https://www.skybriefing.com/fr/home>

ARRIVAL

The procedure proposed on arrival is : **NEGRA 2A – ILS** in any track.

