

**GENERAL**

For the fourth leg of the tour, you will depart from Samos to reach *Skiathos*.

The maximum aircraft category is : Cat C.

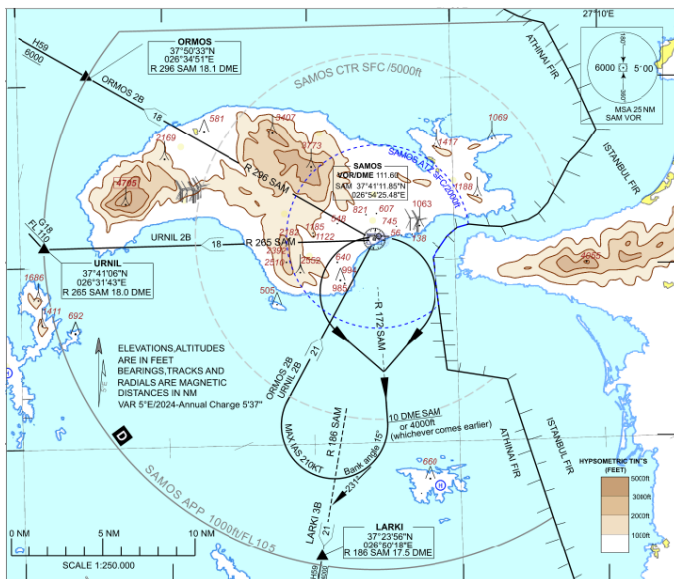
It is an IFR flight, with the following route :

- **F180-240 ORMOS H59 NISOS R32 RIPLI R19 KEA N132 ROPOX M749 SIGFO**

Link to eAIP: <https://aisgr.hasp.gov.gr/>

**DEPARTURE**

The proposed procedure for departure is : **ORMOS 2B** out of runway 09 or 27.





**GENERAL**

Skiathos is an airport located on a Greek island, with interesting non-precision approaches to any runway.

Link to eAIP: <https://aisgr.hasp.gov.gr/>

**ARRIVAL**

The procedure imposed on arrival is : **IFOS 1C – Lctr** for runway 01 or 19.

