

## GENERAL

For the second leg of the tour, you will leave Ajaccio to reach Reggio Calabria. The maximum aircraft category is : Cat C.

It is an IFR flight, with the following route :

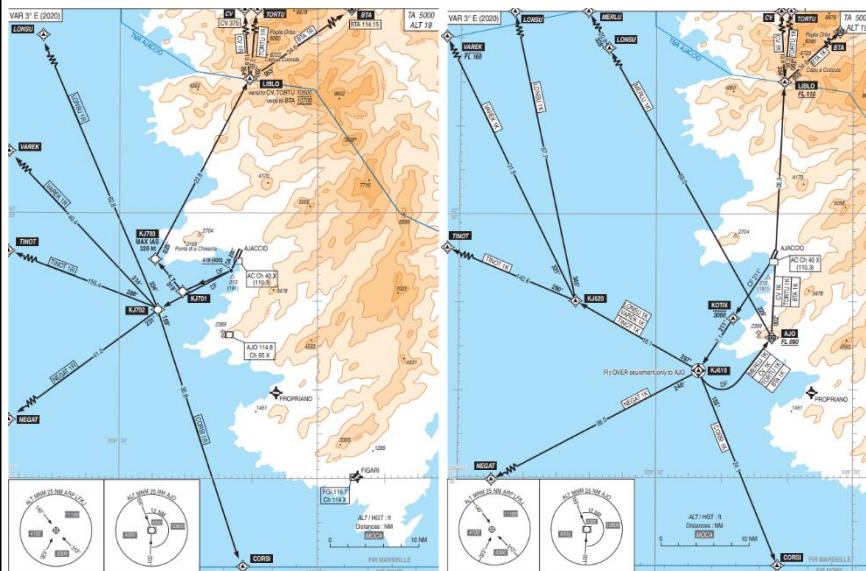
- **F210-410 CORSI DCT RAMEN DCT BULAR DCT BERMJ**

Ajaccio is a French airport located in Corsica, surrounded by high mountainous reliefs.

Link to eAIP: <https://www.sia.aviation-civile.gouv.fr/>

## DEPARTURE

The proposed procedure for departure is: **CORSI IR** or **CORSI IK** out of runway 20.



## GENERAL

Reggio Calabria is an Italian coastal airport with mountainous terrain to the east of the airport, making approaches to runway 33 interesting due to the orientation of the runway.

Link to eAIP: <https://www.enav.it/en/login-required>

## ARRIVAL

The procedure imposed on arrival is: **BERMI 1A - LOC A** of runway 33.

