

GENERALITIES

For the first leg of this tour, you will depart from *Innsbruck* to go to *Ajaccio*. The maximum aircraft category is : Cat C.

It is an IFR flight, with the following route :

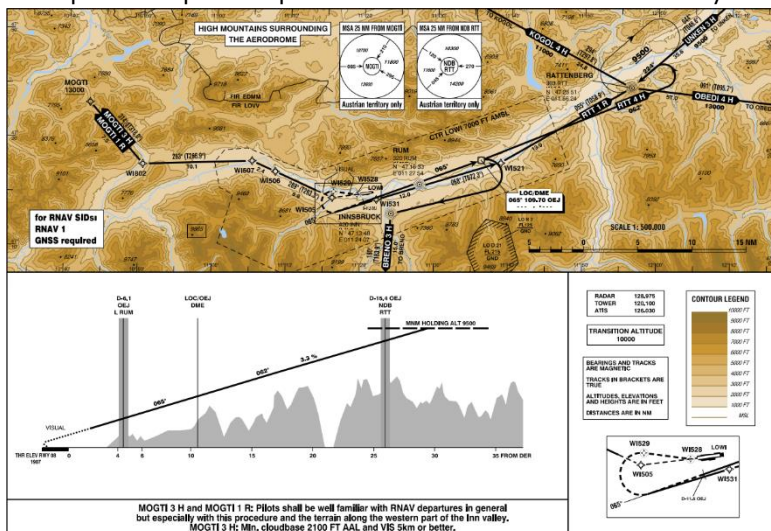
- **F250-390 BRENO M726 NAXAV DCT IDONA/NXXXXF210-230 DCT ERTEV DCT TORTU**

Innsbruck is an *Austrian* airport particularly dangerous with some high mountains in the vicinity of the airport, making departure and arrival very tricky.

Link to the eAIP : <https://eaip.austrocontrol.at/>

DEPARTURE

The imposed departure procedure is : **BRENO 3H** from runway 26.



GENERALITIES

Ajaccio is a French airport located in Corsica Island, also nearby high mountain, the airport had some interesting approaches on runway 20.

Link to the eAIP : <https://www.sia.aviation-civile.gouv.fr/>

ARRIVAL

The imposed arrival procedure is : **VPT A** from runway 20.

