



Letter of Agreement (LoA)

Bordeaux ACC (LFBB)

Name: LoA-LFBB_EN

Date: March 19, 2026

Version: v8.0

Validity: Permanent

INDEX

1.	Purpose	2
2.	Areas of Responsibility.....	2
2.1.	Airspace structure and classification within the Area of Common Interest.....	2
2.1.1.	LFBB FIR/UIR	2
2.2.	Sectorisation within the Area of Common Interest.....	3
2.2.1.	LFBB ACC.....	3
2.2.2.	Toulouse APP	4
2.2.3.	Pyrenees APP	5
2.2.4.	Biarritz APP	6
2.2.5.	Limoges APP	7
2.2.6.	Aquitaine APP.....	8
2.2.7.	La Rochelle APP	9
2.2.8.	Poitiers APP	10
3.	Procedures for Coordination	11
3.1.	General Conditions for Acceptance of Flights	11
3.2.	ATS-Routes, DCTs, Co-Ordination Points and Level Allocation	12
3.2.1.	Flights from LFBB S ACC to LFBB N ACC	12
3.2.2.	Flights from LFBB N ACC to LFBB S ACC	12
3.2.3.	Flights from LFBB ACC to APP.....	13
3.2.4.	Flights from APP to LFBB ACC.....	18
3.2.5.	Flights from APP to APP	23
4.	Contributions	26
5.	Changelog.....	26

1. Purpose

The purpose of this Letter of Agreement (LoA) is to define the coordination procedures to be applied in **Bordeaux ACC** and **Bordeaux FIR APP** when providing Air Traffic Services (ATS) under IFR or VFR flight rules.

The content of the agreement is approved by the concerned ATC Operations Department and FIR Chiefs and its application is mandatory for all IVAO members providing ATS within an active position concerned by this LoA.

2. Areas of Responsibility

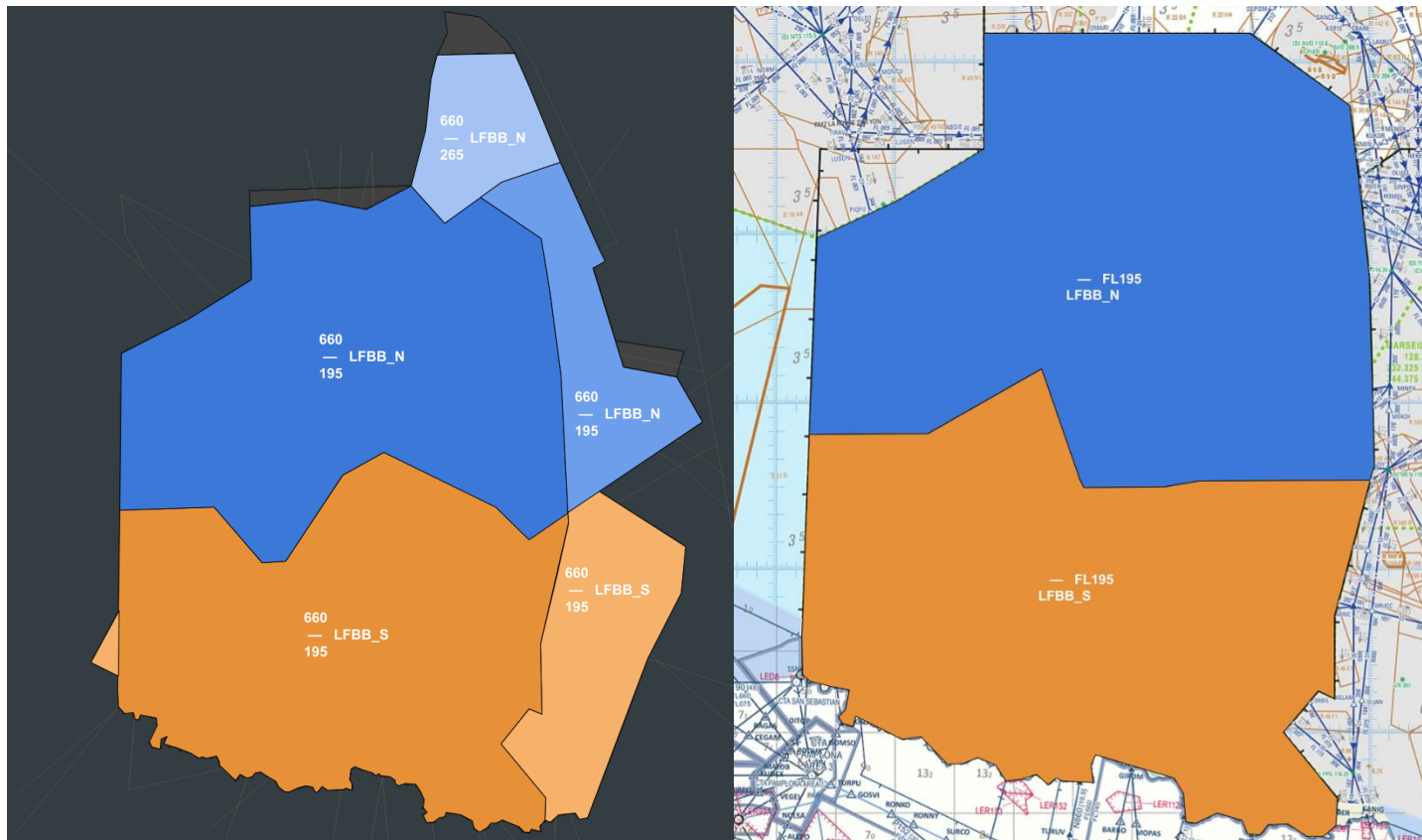
2.1. Airspace structure and classification within the Area of Common Interest

2.1.1. LFBB FIR/UIR

Area	Vertical Limits	Airspace Classification
UIR	Above FL660	G
	FL195/FL660	C
FIR	FL115/FL195	D
	AGL-AMSL/FL115	G outside other classified airspace

2.2. Sectorisation within the Area of Common Interest

2.2.1. LFBB ACC



The Bordeaux upper and lower airspace sectorisation is described in the pictures above.

The positions concerned by this LoA are the following:

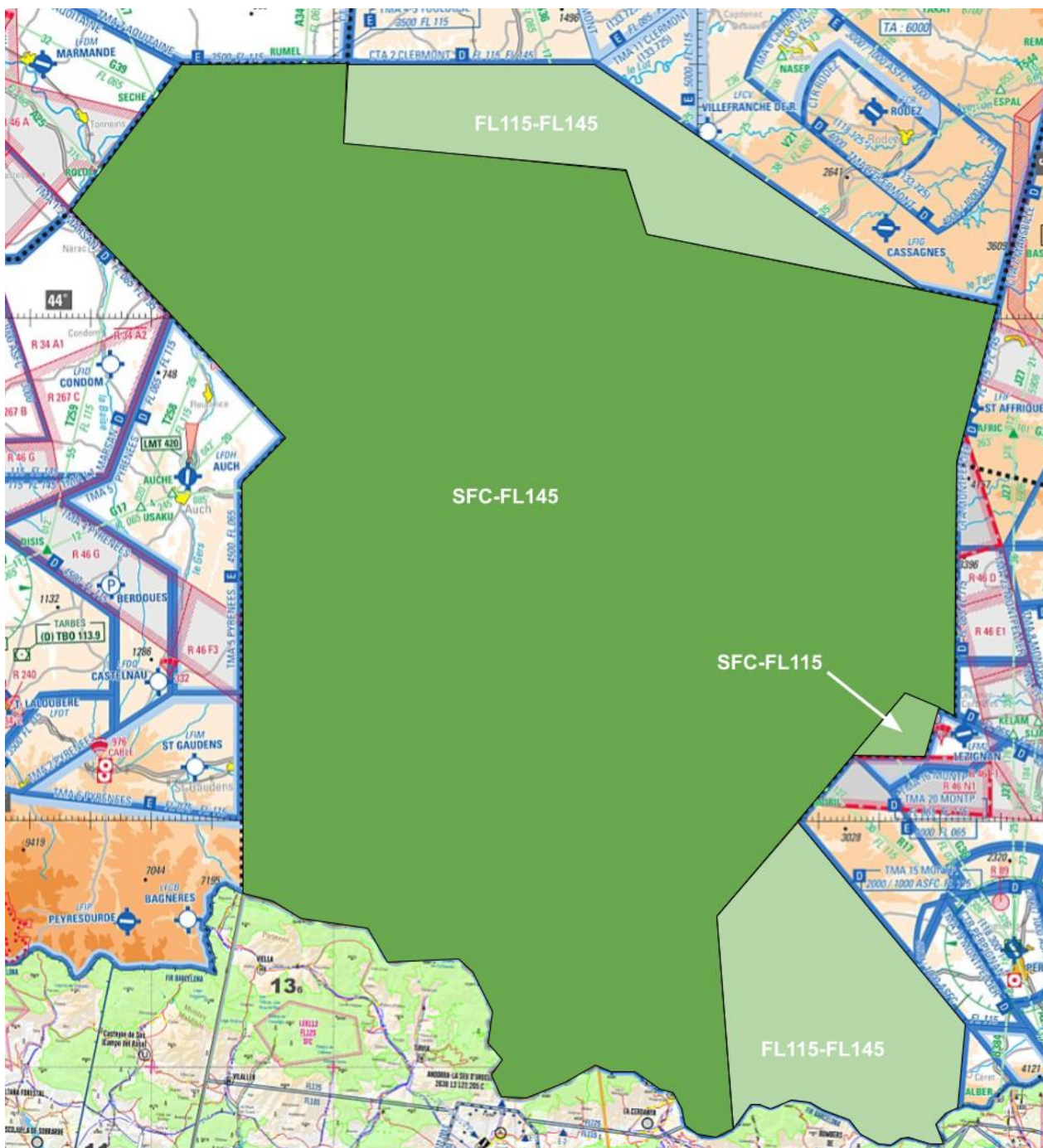
Position	Identifier	Frequency	Remarks
Primary Sectors			
Bordeaux Control	LFBB_CTR	130.230	
Secondary Sectors			
Bordeaux Control	LFBB_N_CTR	134.255	
Bordeaux Control	LFBB_S_CTR	126.130	

When approaches are closed, Bordeaux North is responsible for Aquitaine, Limoges and Poitiers; Bordeaux South is responsible for Biarritz, Pyrenees and Toulouse.

FOR SIMULATION USE ONLY - NOT VALID FOR REAL OPERATIONS

2.2.2. Toulouse APP

Toulouse APP Area of Responsibility is depicted by the picture below from SFC to FL145.



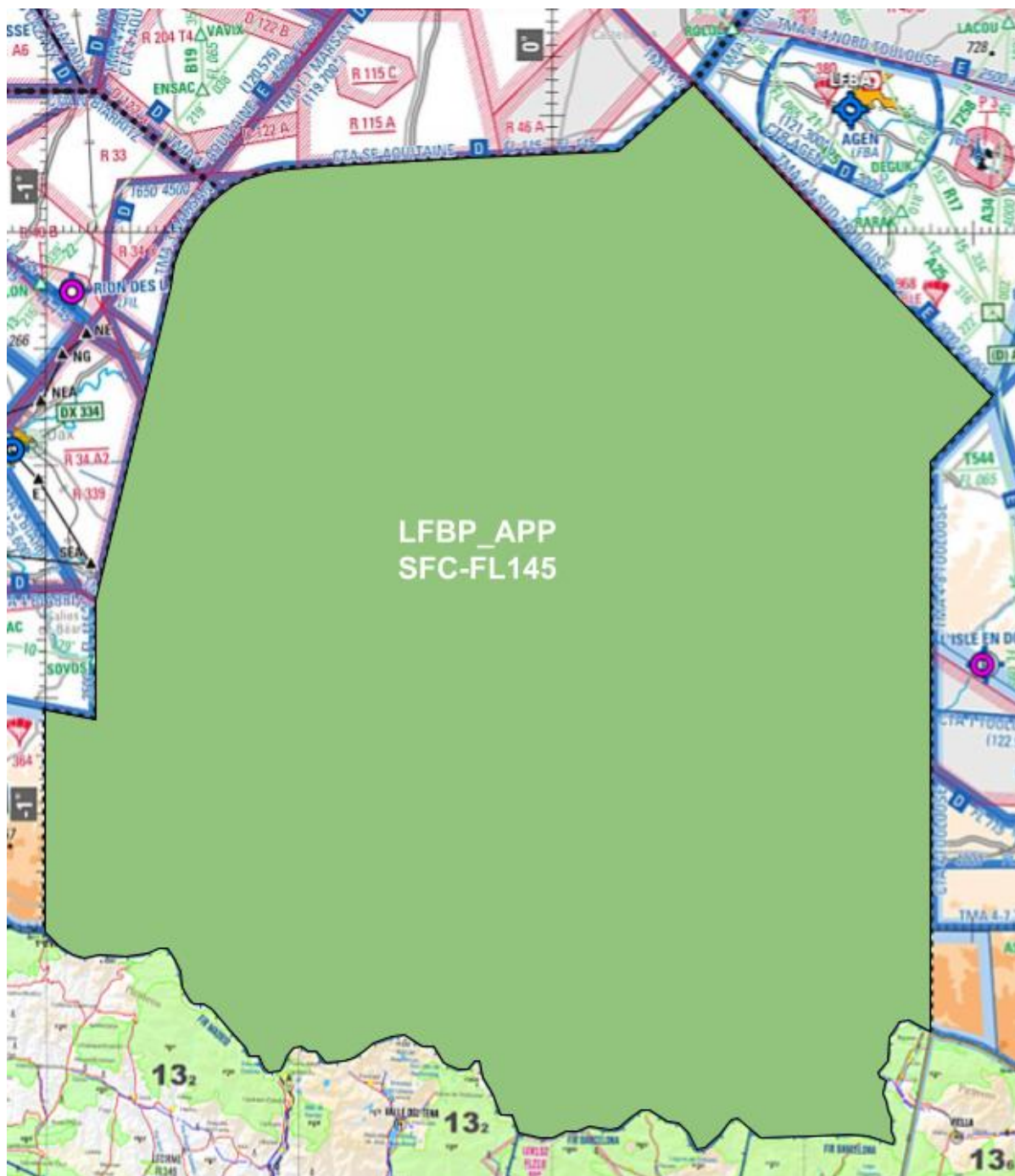
There is only one primary position in charge of Toulouse APP airspace:

Position	Identifier	Frequency	Remarks
Primary Sectors			
Toulouse Approach	LFBO_APP	129.305	

FOR SIMULATION USE ONLY - NOT VALID FOR REAL OPERATIONS

2.2.3. Pyrenees APP

Pyrenees APP Area of Responsibility is depicted by the picture below from SFC to FL145.



There is only one primary position in charge of Pyrenees APP airspace:

Position	Identifier	Frequency	Remarks
Primary Sectors			
Pyrenees Approach	LFBP_APP	128.800	

FOR SIMULATION USE ONLY - NOT VALID FOR REAL OPERATIONS

2.2.4. Biarritz APP

Biarritz APP Area of Responsibility is depicted by the picture below from SFC to FL145.



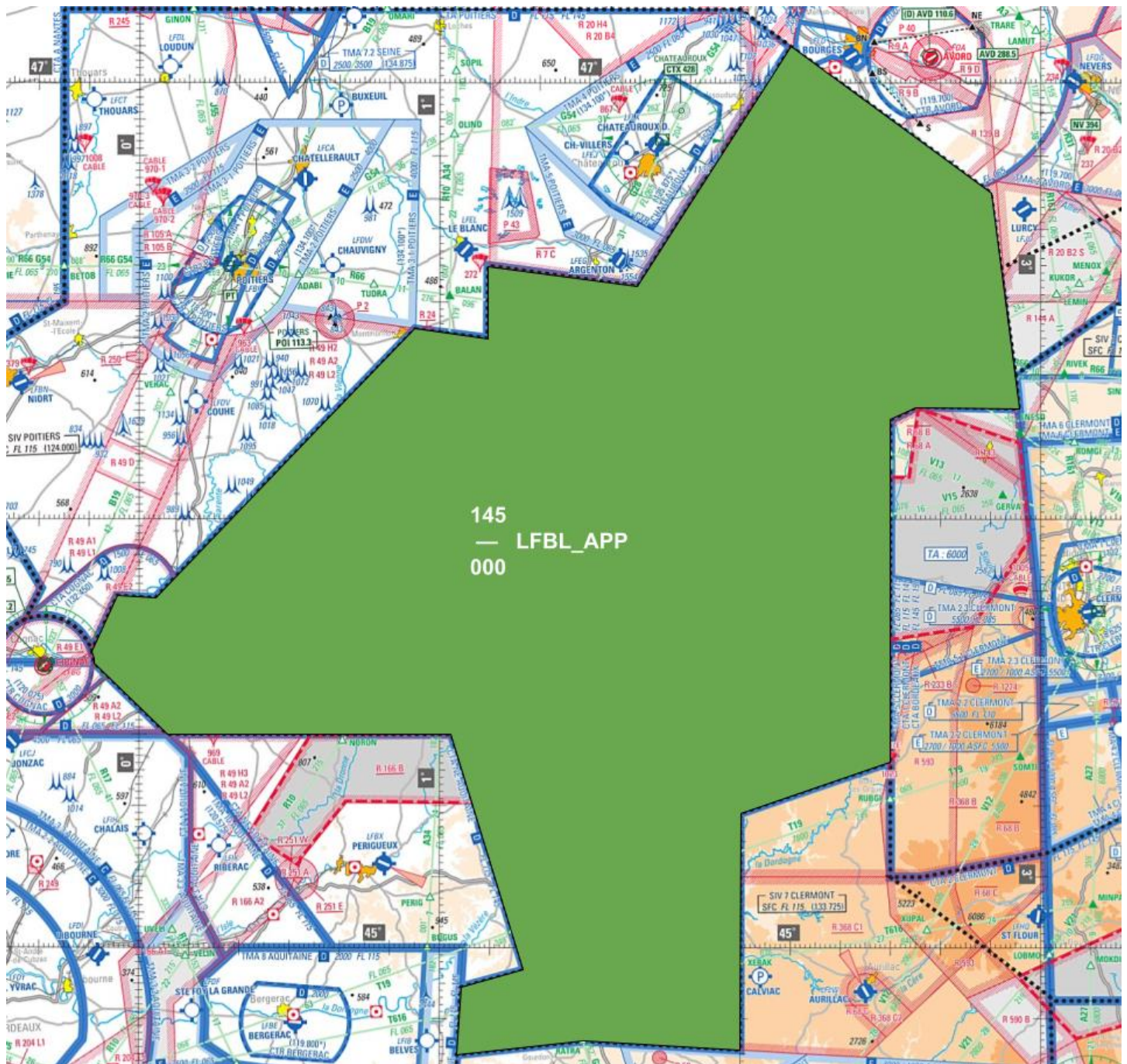
There is only one primary position in charge of Biarritz APP airspace:

Position	Identifier	Frequency	Remarks
Primary Sectors			
Biarritz Approach	LFBZ_APP	125.600	

FOR SIMULATION USE ONLY - NOT VALID FOR REAL OPERATIONS

2.2.5. Limoges APP

Limoges APP Area of Responsibility is depicted by the picture below from SFC to FL145.



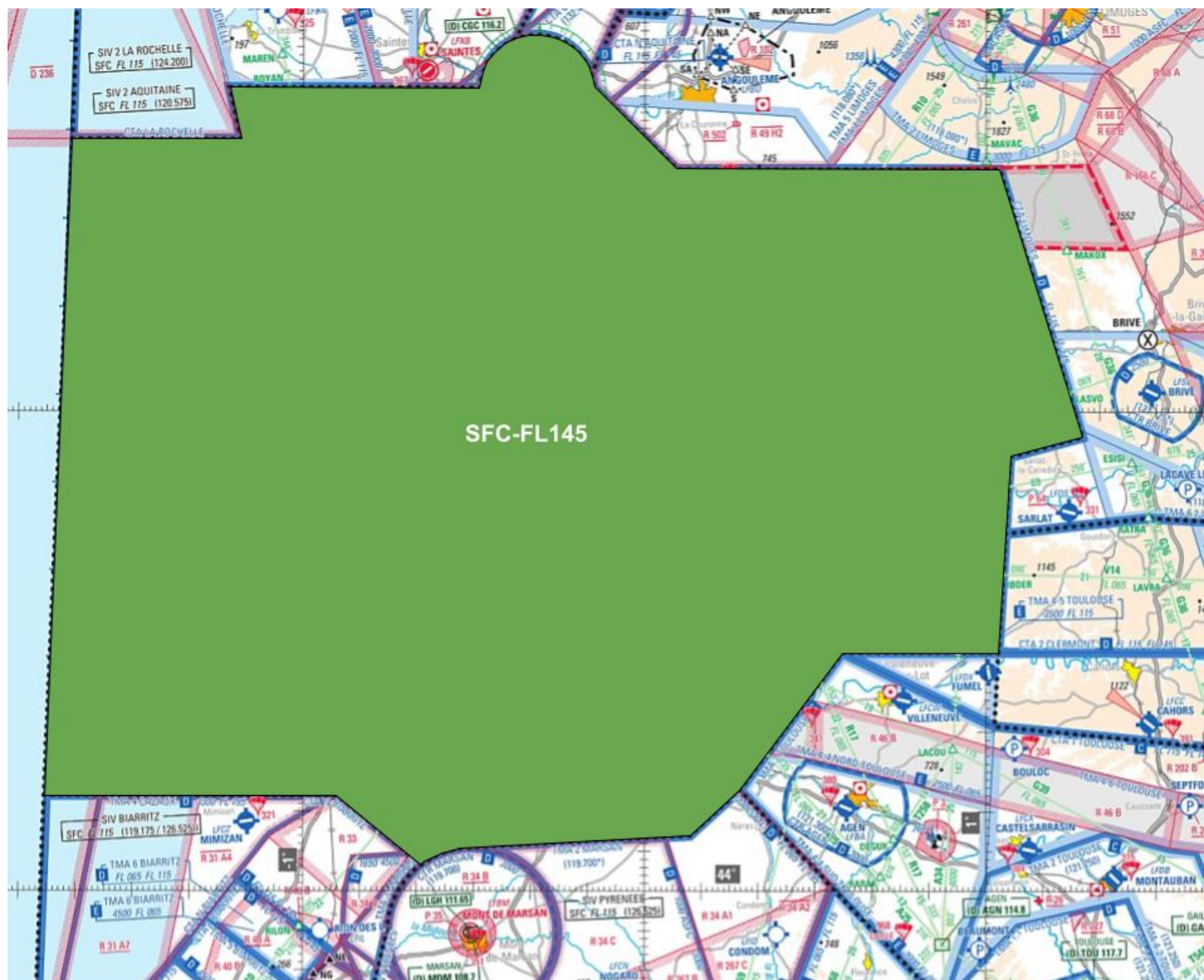
There is only one primary position in charge of Limoges APP airspace:

Position	Identifier	Frequency	Remarks
Primary Sectors			
Limoges Approach	LFBL_APP	118.080	

FOR SIMULATION USE ONLY - NOT VALID FOR REAL OPERATIONS

2.2.6 Aquitaine APP

Aquitaine APP Area of Responsibility is depicted by the picture below from SFC to FL145.



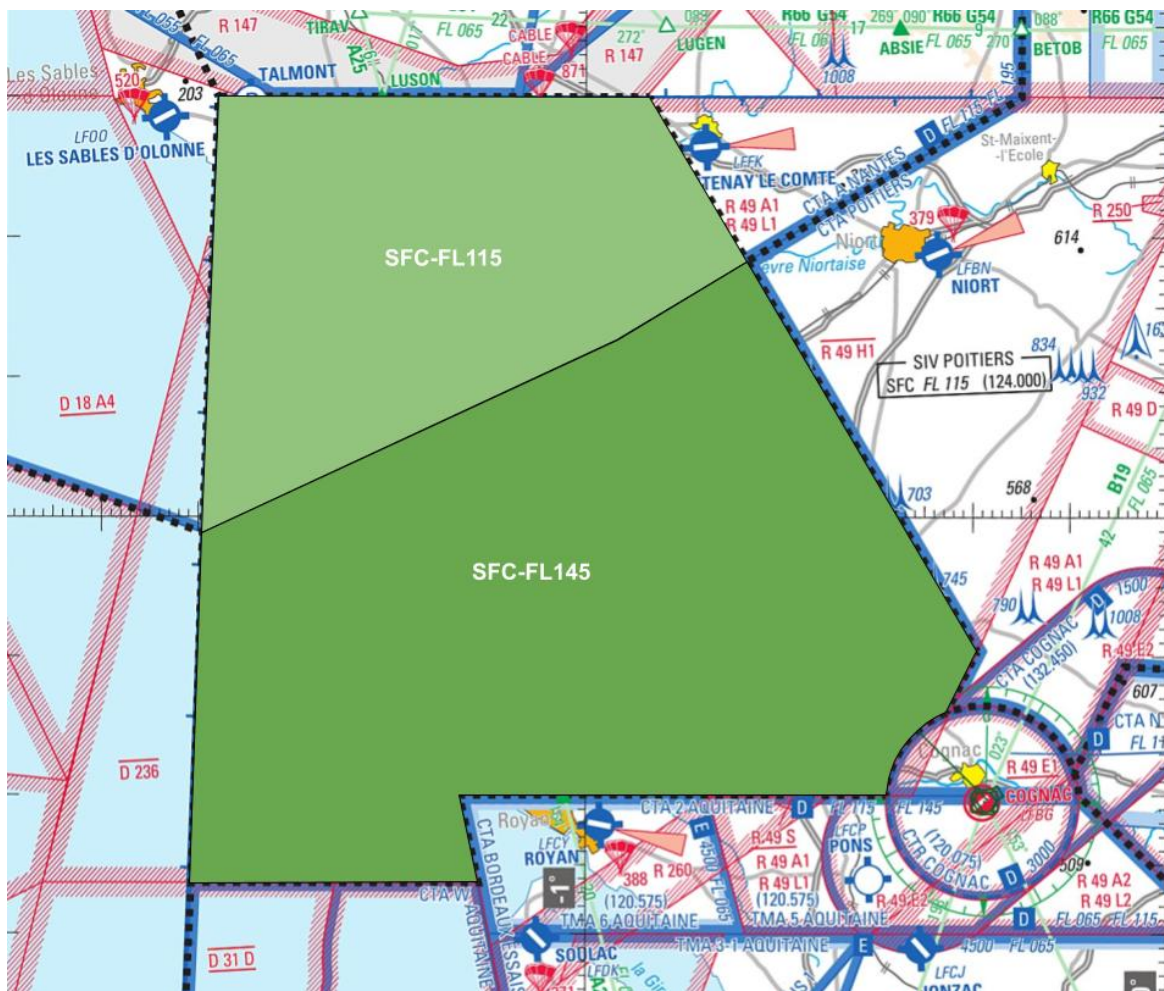
There is only one primary position in charge of Aquitaine APP airspace:

Position	Identifier	Frequency	Remarks
Primary Sectors			
Aquitaine Approach	LFBD_APP	129.875	

FOR SIMULATION USE ONLY - NOT VALID FOR REAL OPERATIONS

2.2.7. La Rochelle APP

La Rochelle APP Area of Responsibility is depicted by the picture below from SFC to FL145.



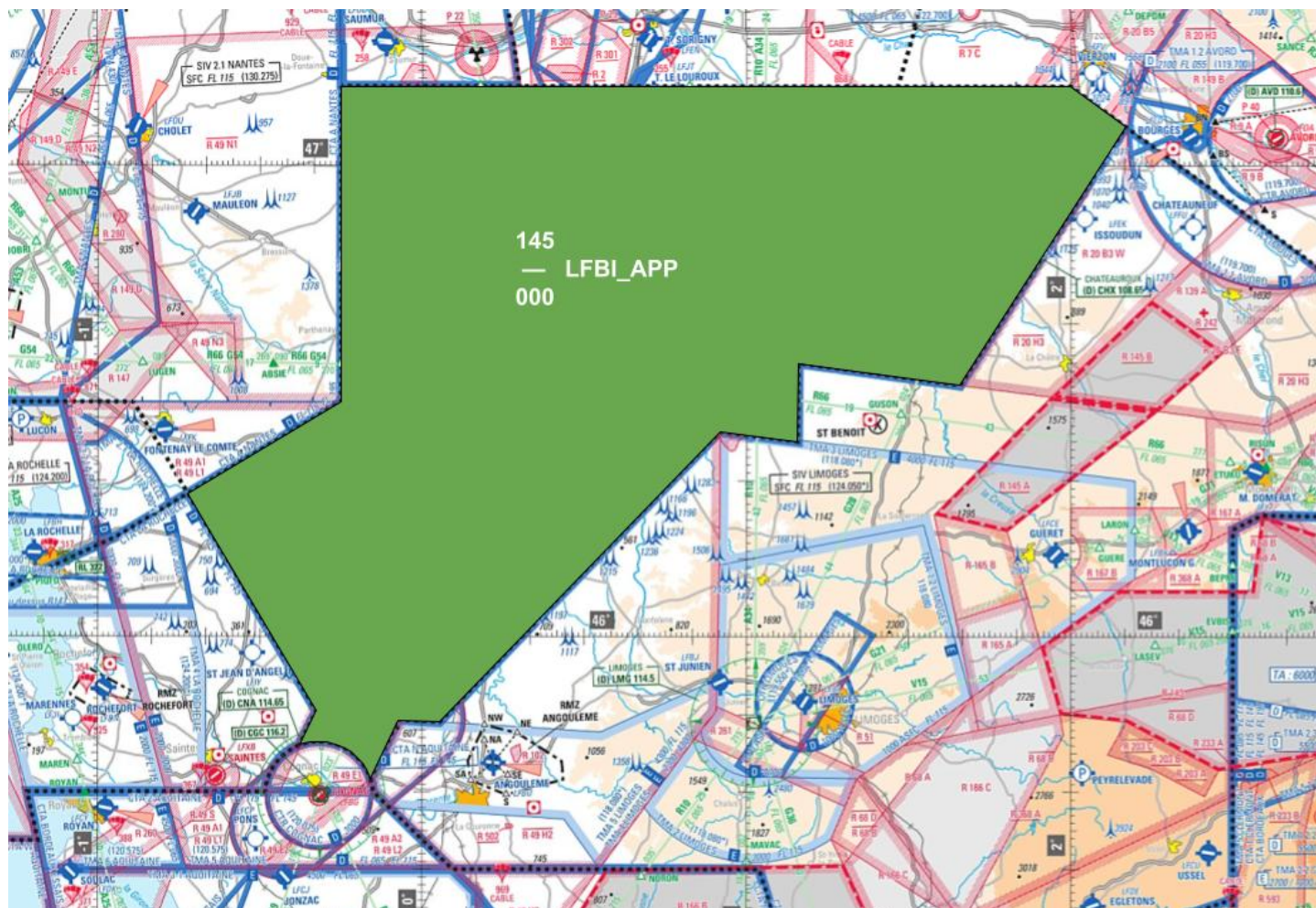
There is only one primary position in charge of La Rochelle APP airspace:

Position	Identifier	Frequency	Remarks
Primary Sectors			
La Rochelle Approach	LFBH_APP	124.200	

FOR SIMULATION USE ONLY - NOT VALID FOR REAL OPERATIONS

2.2.8. Poitiers APP

Poitiers APP Area of Responsibility is depicted by the picture below from SFC to FL145.



There is only one primary position in charge of Poitiers APP airspace:

Position	Identifier	Frequency	Remarks
Primary Sectors			
Poitiers Approach	LFBI_APP	134.100	

FOR SIMULATION USE ONLY - NOT VALID FOR REAL OPERATIONS

3. Procedures for Coordination

3.1. General Conditions for Acceptance of Flights

Coordination of flights shall take place by reference to the COP for the relevant route and in accordance with the appropriate flight levels specified in paragraph 3.2.

Flights shall be considered to be maintaining the coordinated flight level at the transfer of control point unless climb or descent conditions have been clearly stated by either the LoA conditions or a text/verbal coordination.

If the accepting ATS unit cannot accept a flight offered in accordance with the conditions specified in the LoA, it shall clearly indicate its inability and specify the conditions under which the flight will be accepted.

For any proposed deviation from the conditions specified in 3.2 (COP, route, FL), the transferring unit shall initiate an approval request.

Traffics shall be transferred as soon as possible, clear of any conflicting traffic.

Silent Radar Handover are possible with a minimal separation of 10Nm and required if the longitudinal separation is less than 20Nm. In that case, the transferring ATS unit shall assign speeds/Mach numbers to both aircraft, the speed of the number one needs to be greater or equal to the speed of the second. Pilots shall report their assigned speed to the receiving ATS unit at the first contact.

3.2. ATS-Routes, DCTs, Co-Ordination Points and Level Allocation

3.2.1. Flights from LFBB S ACC to LFBB N ACC

Flights are transferred on route to the first waypoint in the next sector.

ATS-Route or DCT	COP	Flight Level Allocation	Special Conditions	Reference
SECHE-UVELI-CNA	UVELI	Even		
		FL340	ARR LFRI LFRS LFRZ	
VAVIX-CNA VAVIX-POI/ADABI/TUDRA	VAVIX	Even		
		FL340	ARR LFRI LFRS LFRM LFOT	
LACOU-CHALA-CNA	CHALA	Even		
		FL300	DEP LFBO	
FISTO-POI-PEPAX FISTO-PERIG-ADABI FISTO-PERIG-TUDRA	FISTO	Even		
		FL340	DEP LFBO	
PERIG-POI PERIG-LMG	PERIG	Even		
		FL280	ARR LFOT LFLX	

3.2.2. Flights from LFBB N ACC to LFBB S ACC

ATS-Route or DCT	COP	Flight Level Allocation	Special Conditions	Reference
TUPAR-CNA-VAVIX UVELI-OSMOB-VAVIX	VAVIX	Odd		
		FL290	ARR LFBZ LESO	
CNA-UVELI-SECHE	SECHE	Odd		
		FL350	ARR LFMU	
		FL330	ARR LFBT LFBP LFMK	
		FL290	ARR LFBO	
BALAN-EVPOK-NARAK GUERE-EVPOK-NARAK LMG-EVPOK-NARAK	NARAK	Odd		
		FL350	ARR LFBP LFBT LFMU	
		FL330	ARR LFMK	
		FL290	ARR LFBO	
LERGA-MINSO-NARAK	NARAK	Odd		
		FL350	ARR LFBZ LESO	
		FL330	ARR LFBP LFBT LFMU	
		FL290	ARR LFBO LFMK	
ADEKA-MOKDI-MEN	MEN	Odd		
		FL290	ARR LFMZ LFMU	
		FL250	ARR LFMT LFMI LFTW	

FOR SIMULATION USE ONLY - NOT VALID FOR REAL OPERATIONS

3.2.3. Flights from LFBB ACC to APP

Flights arriving to a SIV are transferred by Bordeaux ACC to the concerned APP descending to FL150 on route to the “DCT” waypoint according to the last FPL point.

Depending on the route, some flights may need to be transferred to another APP, these are described in the “profile” column in the following tables.

3.2.3.1. Aquitaine APP

Destination	Last FPL point	DCT	profile	Reference
LFBC	ASKAN	ETPAR	LFBB_N -> LFBD_APP	
	MOTIK	OBLOC	LFBB_S -> LFBD_APP	
	LAPOS	VAVIX		
LFBD	ROYAN	ETPAR	LFBB_N -> LFBD_APP	
	CNA LMG	VAGNA		
	VELIN	LIBRU		
	MIRBA	LIBRU	LFBB_S -> LFBD_APP	
	VAVIX	DIRAX		
LFBE	IBDER	IBDER	LFBB_N -> LFBD_APP	
	BUGUS	BUGUS		
	VELIN	VELIN		
	OBLOC	OBLOC		
	RUMEL	RUMEL	LFBB_S -> LFBO -> LFBD	
LFBG	UVELI	UVELI	LFBB_N -> LFBD_APP	
	BMC	BMC		
	LMG	CNA	LFBB_N -> LFBL -> LFBD	
	VERAC	CNA	LFBB_N -> LFBI -> LFBD	
	ROYAN	On coordination	LFBD -> LFBH -> LFBB_N	
LFBS	LAPOS	VAVIX	LFBB_S -> LFBD_APP	
LFBX	PERIG	PERIG	LFBB_N -> LFBD_APP	
	SECHE	SECHE		
	IBDER	IBDER		
	VELIN	VELIN (via CNA/LMG)		
		VELIN (via OBLOC/AGN)	LFBB_S -> LFBD_APP	
	LMG	LMG	LFBB_N -> LFBL -> LFBD	
LFCH LFCD	BMC-ASKAN	ETPAR	LFBB_N -> LFBD_APP	
LFCY LFXB	ROYAN ESUZE	ESUZE	LFBB_N -> LFBD_APP	
LFCS LFDI LFDL LFDL	ALL			

FOR SIMULATION USE ONLY - NOT VALID FOR REAL OPERATIONS

3.2.3.2. Biarritz APP

Destination	Last FPL point	DCT	profile	Reference
LFBZ	MAGEC	VAVIX	LFBB_S -> LFBZ_APP	
	SOVOS	SOVOS	LFBB_S -> LFBP -> LFBZ	
LESO	VAVIX	VAVIX	LFBB_S -> LFBZ_APP	
	SOVOS	SOVOS	LFBB_S -> LFBP -> LFBZ	

3.2.3.3. La Rochelle APP

Destination	Last FPL point	DCT	profile	Reference
LFBH LFDN	MAREN	ROYAN ESUZE	LFBB_N -> LFBP -> LFBH	
LFDP	OLERO	ROYAN ESUZE		
LFBH	BEMAX	On coordination	LFBB_N -> LFBP -> LFBH	3.2.3.3.1.
LFOO LFRI	A25 PIQFU	On coordination	LFBB_N -> LFBH	

3.2.3.3.1.

Available only if LF-R49 are not active or active up to FL135 maximum.

3.2.3.4. Limoges APP

Destination	Last FPL point	DCT	profile	Reference
LFBK	GUSON	GUSON	LFBB_N -> LFBP_APP	
	LARON	LARON		
LFBP	GUERE	IAF	LFBB_N -> LFBP_APP	
	GUSON			
	MAKOX			
	NORON	NORON	LFBB_N -> LFBP -> LFBP	
	PERIG	PERIG	LFBB_N -> LFBP -> LFBP	
	BALAN	IAF	LFBB_N -> LFBP -> LFBP	
LFBP	LMG	LMG	LFBB_N -> LFBP_APP	
	NORON	NORON	LFBB_N -> LFBP -> LFBP	
	CNA via VELIN/BMC	CNA	LFBB_N -> LFBP -> LFBP	
	CNA via POI	CNA	LFBB_N -> LFBP -> LFBP	
LFCU LFDE LFDS LFLT	ALL		LFBB_N -> LFBP_APP	
LFSL	MAKOX	MAKOX BSC	LFBB_N -> LFBP_APP	3.2.3.4.1.
	PERIG	PERIG	LFBB_N -> LFBP -> LFBP	
LFCC	LAVRA	LAVRA	LFBB_N -> LFBP -> LFLC	
LFHY LFLN LFLV LFLO	RISUN	RISUN		
LFLC	RISUN	RISUN		3.2.3.4.2.
LFLW	XERAK	ESISI XERAK		3.2.3.4.1.

FOR SIMULATION USE ONLY - NOT VALID FOR REAL OPERATIONS

LFLD LFOA	GUERE	GUERE	LFBB_N -> LFBL_APP	
	RISUN	RISUN		
	CTX	CTX	LFBB_N -> LFBI -> LFBL -> LFFF	

3.2.3.4.1.

DCT BSC and XERAK only available if R68 is not active

3.2.3.4.2.

When LF-R68 is active only, these flights must be at FL140 maximum at ENESO.

3.2.3.5. Poitiers APP

Destination	Last FPL point	DCT	profile	Reference
LFBI	OLINO	IAF	LFBB_N -> LFBI_APP	
	VERAC			
	BALAN	IAF	LFBB_N -> LFBL -> LFBI	
LFBN	POI	POI	LFBB_N -> LFBI_APP	
	VERAC	VERAC		
	OLERO	On coordination	LFBB_N -> LFBH -> LFBI	
LFLX	POI-OLINO	CTX	LFBB_N -> LFBI_APP	
	GUSON		LFBB_N -> LFBL -> LFBI	
LFCA LFEL	ALL		LFBB_N -> LFBI_APP	
LFFK LFJB LFOO LFOU LFRJ	POI-BETOB	POI	LFBB_N -> LFBI -> LFRS	3.2.3.5.1.
LFJR LFOD LFOV LFRM	GINON	GINON	LFBB_N -> LFBI -> LFRS	3.2.3.5.2.
LFOT	SOPIL	SOPIL	LFBB_N -> LFBI	
	OMARI	OMARI		

3.2.3.5.1.

These flights shall cross BETOB at FL145 maximum. When LF-R49 NI is active, Bordeaux ACC shall prenote the military entity responsible for the area (LFBG_APP by default).

3.2.3.5.2.

In case of LF-R49 NI activity, these flights shall cross POI at FL100 maximum.

3.2.3.6. Pyrenees APP

Destination	Last FPL point	DCT	profile	Reference
LFBM	AGN	POHKI	LFBB_S -> LFBP_APP	
	MAGEC	MAGEC	LFBB_S -> LFBZ -> LFBP	
	ENSAC	ENSAC	LFBB_S -> LFBZ -> LFBP	
	OBLOC	OBLOC		
LFBP LFBT	AGN	TEPTI	LFBB_S -> LFBP_APP	
	TOU			
	TEPTI			3.2.3.6.1.
	SOVOS	SOVOS	LFBB_S -> LFBZ -> LFBP	

FOR SIMULATION USE ONLY - NOT VALID FOR REAL OPERATIONS

LFCB LFCO LFDT LFID LFIM	ALL		LFBB_S -> LFBP_APP	
LFCN LFDA	LMB	LMB	LFBB_S -> LFBP_APP	
LFDH	AUCHE	AUCHE	LFBB_S -> LFBP_APP	
	AGN	AGN	LFBB_S -> LFBO -> LFBP	

3.2.3.6.1.

In case of Toulouse CTA activity (Toulouse Essais), these flights shall route ASPET-DODOM-TEPTI.

3.2.3.7. Toulouse APP

Destination	Last FPL point	DCT	profile	Reference
LFBA	SECHE	SECHE	LFBB_S -> LFBD -> LFBO	
	LACOU via RUMEL	RUMEL	LFBB_N -> LFBD -> LFBO	
	LACOU via GAI	LACOU	LFBB_S -> LFBO_APP	
	AGN	AGN		
	OVDIL	OVDIL		
LFBF	MONIX	MONIX	LFBB_S -> LFBO_APP	
	GAI	GAI		
	AFRIC ORBIL NARAK	ADIMO		
	AGN SECHE	AGN		
	TOPTU LMB	SURAS (RWY14) SULIT (RWY32)		
	ASPET	ASPET		
LFBO	AFRIC ORBIL	ADIMO	LFBB_S -> LFBO_APP	
	NARAK	Route NARAK-FUZAP		
	SECHE AGN	AGN		
	TOPTU LMB	SURAS (RWY14) SULIT (RWY32)		
	ASPET	ASPET		
LFBR	GAI	GAI	LFBB_S -> LFBO_APP	
	MONIX	MONIX		
	FINOT	FINOT		
	SECHE AGN	AGN		
	AUCHE	AUCHE		
	ASPET	ASPET		

FOR SIMULATION USE ONLY - NOT VALID FOR REAL OPERATIONS

LF CG LF CL LF CQ LF CW LF CX LF DB LF DJ LF DX LF MW	ALL		LFBB_S -> LFBO_APP	
LFCI	MEN FINOT	IAF	LFBB_S -> LFBO_APP	
	GAI	GAI		
LFCK	MEN MASAM FINOT GAI	IAF	LFBB_S -> LFBO_APP	
LFMK	MONIX	MONIX	LFBB_S -> LFBO_APP	
	GAI RAPES	RAPES		
LFCC	AULON	AULON	LFBB_S -> LFBO -> LFLC	
	NARAK	NARAK		
	LACOU	LACOU		
LFCR	GAI	GAI		
LFLW	GILUR	IAF		

FOR SIMULATION USE ONLY - NOT VALID FOR REAL OPERATIONS

3.2.4. Flights from APP to LFBB ACC

3.2.4.1. Aquitaine APP

Departure	First FPL point	DCT	profile	Reference
LFBC	ASKAN	CNA	LFBD_APP -> LFBB_N	
	MOTIK	OBLOC	LFBD_APP -> LFBB_S	
	LAPOS	VAVIX		
LFBD	ROYAN	ROYAN	LFBD_APP -> LFBB_N	
	CNA	CNA		
	OBLOC	OBLOC VELIN UVELI SECHE	LFBD_APP -> LFBB_S	
	VAVIX	VAVIX		3.2.4.1.1.
LFBE	BUGUS	BUGUS POI BOKNO TUDRA LMG	LFBD_APP -> LFBB_N	
	VELIN	VELIN CNA		
	OBLOC	OBLOC	LFBD_APP -> LFBB_S	
	IBDER	IBDER		
	SECHE	AGN GAI NARAK FJR	LFBD -> LFBO -> LFBB_S	
LFBG	UVELI	UVELI	LFBD_APP -> LFBB_N	
	BMC	BMC		
	ROYAN	ROYAN		
	LMG	LMG	LFBD -> LFBL -> LFBB_N	
	VERAC	POI	LFBD -> LFBI -> LFBB_N	
LFBS	LAPOS	BMC VAVIX OBLOC	LFBD_APP -> LFBB_S	
LFBX	PERIG	POI BOKNO TUDRA RUMEL	LFBD_APP -> LFBB_N	
	IBDER	IBDER		
	VELIN	VELIN		
	SECHE	SECHE		
	LMG	LMG	LFBD -> LFBL -> LFBB_N	
LFCH LFCD	ASKAN	ROYAN CNA OBLOC VAVIX	LFBD_APP -> LFBB_N	
LFY LFXB LFDK LFCJ LFCP LFDC LFDU LFIV	ROYAN ESUZE	ESUZE	LFBD_APP -> LFBB_N	
LFCS LFDI LFDK LFDM LFDR	ALL			

3.2.4.1.1.

Aquitaine shall coordinate to Biarritz any departure with a low rate of climb unable to reach FL140 at least 10Nm before ENSAC.

FOR SIMULATION USE ONLY - NOT VALID FOR REAL OPERATIONS

3.2.4.2. Biarritz APP

Departure	First FPL point	DCT	profile	Reference
LFBZ	VAVIX SOSTO	VAVIX	LFBZ_APP -> LFBB_S	3.2.4.2.1.
	SOVOS	ORTEZ	LFBZ -> LFBP -> LFBB_S	
LESO	VAVIX SOVOS	VAVIX SOVOS	LFBZ_APP -> LFBB_S	

3.2.4.2.1.

These flights are transferred climbing to FL130 due to the conflict with Aquitaine departures via VAVIX.

3.2.4.3. La Rochelle APP

Departure	First FPL point	DCT	profile	Reference
LFBH	BEMAX	On coordination	LFBH -> LFBI -> LFBB_N	
	MAREN	ROYAN ESUZE	LFBH -> LFBP -> LFBB_N	
LFDN	MAREN			
LFDP	OLERO			
LFRI LFOU LFEY LFEY LFJB LFFK	PIQFU	On coordination	LFBH_APP -> LFBB_N	

3.2.4.4. Limoges APP

Departure	First FPL point	DCT	profile	Reference
LFBK	GUSON	GUSON	LFBL_APP -> LFBB_N	
	LARON	LMG		
LFBL	BALAN	BALAN	LFBL_APP -> LFBB_N	3.2.5.4.
	LARON	LARON LASEV ROA		
	MAKOX	MAKOX		
	PERIG	LUMEL	LFBL -> LFBP -> LFBB_N	
	NORON	VELIN		
LFBU	LMG	LMG	LFBL_APP -> LFBB_N	
	NORON	VELIN	LFBL -> LFBP -> LFBB_N	
	CNA	CNA BMC		
LFCU LFDE LFDS	ALL		LFBL_APP -> LFBB_N	
LFSL	MAKOX	LMG BALAN DIBAG	LFBL_APP -> LFBB_N	
	PERIG	PERIG	LFBL -> LFBP -> LFBB_N	
LFCC	LAVRA	LAVRA	LFBL -> LFBP -> LFBB_N	
	PERIG	PERIG		
LFHY LFLN LFLV LFLO	RISUN	LARON GUSON	LFBL -> LFBP -> LFBB_N	
LFLC	RISUN	RISUN		
LFLD LFOA	RISUN	RISUN	LFFF -> LFBL -> LFBB_N	
	CTX	CTX	LFFF -> LFBL -> LFBI -> LFBB_N	
LFLW	ESISI	ESISI	LFBL -> LFBP -> LFBB_N	

FOR SIMULATION USE ONLY - NOT VALID FOR REAL OPERATIONS

3.2.4.5. Poitiers APP

Departure	First FPL point	DCT	profile	Reference
LFBI	OLINO	OLINO	LFBI_APP -> LFBB_N	
	VERAC	VERAC		
	BALAN	BALAN		3.2.4.5.1.
LFBN	POI	POI	LFBI_APP -> LFBB_N	
	VERAC	VERAC		
	OLERO	On coordination	LFBI -> LFBH -> LFBB_N	
LFLX	OLINO	OLINO	LFBI_APP -> LFBB_N	
	GUSON	GUSON	LFBI -> LFBL -> LFBB_N	
	ETAMO	ETAMO		
LFCA LFEL	ALL		LFBI_APP -> LFBB_N	
LFJR LFOD LFOV LFRM	GINON	POI	LFBS -> LFBI -> LFBB_N	
LFOT	OMARI	POI	LFPM -> LFBI -> LFBB_N	
	SOPI	BALAN		

3.2.4.5.1.

Poitiers APP is responsible for the compatibility of traffic converging to BALAN departing from LFBI and LFBL with RFL>145.

3.2.4.6. Pyrenees APP

Departure	First FPL point	DCT	profile	Reference
LFBM	AUCHE	AUCHE	LFBP_APP -> LFBB_S	
	BTZ	BTZ	LFBP -> LFBZ -> LFBB_S	
	ENSAC	ENSAC	LFBP -> LFBZ -> LFBB_N	
	OBLOC	OBLOC		
LFBP	USAKU	POKET DIBAG AGN TOU PERIG	LFBP_APP -> LFBB_S	3.2.4.6.1.
	SOVOS	BTZ	LFBP -> LFBZ -> LFBB_S	
LFBT	USAKU	POKET DIBAG AGN TOU PERIG	LFBP_APP -> LFBB_S	3.2.4.6.1.
	TOU	TOU		
	LMB	BTZ	LFBP -> LFBZ -> LFBB_S	
LFCB LFCO LFDL LFID LFIM	ALL		LFBP_APP -> LFBB_S	
LFCN LFDA	LMB	AUCHE SOVOS	LFBP_APP -> LFBB_S	
LFDH	AUCHE	AUCHE	LFBP_APP -> LFBB_S	
	AGN	AGN	LFBP -> LFBO -> LFBB_S	

3.2.4.6.1.

As much as possible, the DCT POKET/DIBAG/PERIG is given according to the FPL when TRA 34 and R34 areas are not active.

FOR SIMULATION USE ONLY - NOT VALID FOR REAL OPERATIONS

3.2.4.7. Toulouse APP

Departure	First FPL point	DCT	profile	Reference
LFBA	AGN	AGN	LFBO_APP -> LFBB_S	
	GAI	GAI		
	LACOU	LACOU		
	PERIG	PERIG	LFBO -> LFBD -> LFBB_N	
	SECHE	SECHE CNA	LFBO -> LFBD -> LFBB_S	
LFBF	GAUDE	ANETO TIVLI LATEK	LFBO_APP -> LFBB_S	
	AUCHE	AUCHE		
	AGN	AGN		
	LACOU	LACOU		
	FISTO	FISTO		
	MEN	MEN		
	GAI	GAI		
	AMOLO	FJR		3.2.4.7.1.
	FINOT	FINOT		
	MORIL	MORIL		
	MONIX	MONIX		
	RIBOU	IBRAP PUMAL GEANT		
LFBO	GAUDE	GAUDE	LFBO_APP -> LFBB_S	
	LMB	LMB		
	FISTO	FISTO		
	LACOU	LACOU		
	MEN	MEN		
	GAI	GAI		
	AMOLO FINOT	FJR		3.2.4.7.1.
	MORIL	MORIL		
	RIBOU	IBRAP PUMAL GEANT		
LFBR	GAUDE	ANETO TIVLI LATEK	LFBO_APP -> LFBB_S	
	AUCHE	AUCHE		
	AGN	AGN		
	LACOU	LACOU		
	FISTO	FISTO		
	MEN	MEN		
	GAI	GAI		
	AMOLO	FJR		3.2.4.7.1.
	FINOT	FINOT		
	MORIL MONIX	MORIL		

FOR SIMULATION USE ONLY - NOT VALID FOR REAL OPERATIONS

	RIBOU	IBRAP PUMAL GEANT		
LFCG LFCL LFCQ LFCW LFCX LFDJ LFDX LFMW	ALL		LFBO_APP -> LFBB_S	
LFCI	MASAM	PPG	LFBO_APP -> LFBB_S	
	GAI	GAI		
	FINOT	GAI TOU		
LFCK	MEN	MEN	LFBO_APP -> LFBB_S	
	MASAM	PPG		
	FINOT	GAI TOU		
	AFRIC	FJR (AMOLO)		3.2.4.7.1.
LFMK	MONIX	TOU	LFBO_APP -> LFBB_S	
	MASAM	GAI		
	GALDO	ANETO TIVLI LATEK		
LFCC	LACOU	LACOU	LFBO_APP -> LFBB_S	
	AGN	AGN		
	NARAK	NARAK		
	GAI	GAI		
	AULON	AULON		
LFCR	GAI	GAI	LFBO_APP -> LFBB_S	
LFLW	ROMAK	GAI		

3.2.4.7.1.

In case of TRA 40/TRA 41/R108 activity, this traffic stays on AMOLO/FINOT.

3.2.5. Flights from APP to APP

If an approach does not want a traffic on his frequency, the coordination shall include the waypoint and the Flight Level required for the transfer to the next sector as well as the next sector frequency.

3.2.5.1. Flights between La Rochelle APP and Aquitaine APP

Traffics are transferred on route to ROYAN on A25 airway at an odd Flight Level from La Rochelle to Aquitaine and at an even Flight Level from Aquitaine to La Rochelle.

Aquitaine APP is responsible for LFCY procedures. Arrivals from the North to LFCY shall be coordinated by La Rochelle APP at least 5 minutes before ROYAN to determine the transfer conditions. In case of Northbound departure, Aquitaine coordinates the flight to La Rochelle before the take-off at the latest to determine the transfer conditions.

Traffic departing from LFBH LFDN LFDP via ROYAN shall be coordinated by La Rochelle to determine the transfer Flight Level.

Traffic arriving to LFBH LFDN LFDP via ROYAN shall be coordinated by Aquitaine to determine the transfer Flight Level.

Traffic departing from LFBG via ROYAN shall be coordinated by Aquitaine to determine the transfer conditions (waypoint and Flight Level).

3.2.5.2. Flights between La Rochelle APP and Poitiers APP

There is no defined route between La Rochelle and Poitiers, thus, all flights shall be coordinated.

In case of LF-R49 activity (LFBG_APP), the transferring ATS unit shall first coordinated the flight to Cognac APP, if the transit is approved in LF-R49, the flight will be transferred to Cognac APP which will coordinate the flight to the receiving ATS unit.

If the transit is denied in LF-R49 by Cognac APP, the flight will avoid the area and will then be transferred to either Nantes or Aquitaine.

3.2.5.3. Flights between Poitiers APP and Aquitaine APP

Traffics are transferred on route CNA<->VERAC (B19) at their RFL, odd from Poitiers to Aquitaine and even from Aquitaine to Poitiers.

Arrivals and departures from LFBG shall be coordinated between the two ATS units to determine the transfer conditions. If Cognac APP (LFBG_APP) is connected, the coordination will be performed with this controller.

3.2.5.4. Flights between Poitiers APP and Limoges APP

Transits are transferred on their route (R66 R10 A34 G28) at their RFL at an odd Flight Level from Poitiers to Limoges and at an even Flight Level from Limoges to Poitiers.

Arrivals to LFBL via BALAN are transferred by Bordeaux ACC to Poitiers APP, Poitiers shall then coordinate this flight to Limoges to determine the transfer conditions (waypoint and Flight Level).

Arrivals to LFBI (respectively LFLX) via BALAN (respectively GUSON) are transferred by Bordeaux ACC to Limoges APP, Limoges shall then coordinate this flight to Poitiers to determine the transfer conditions (waypoint and Flight Level).

Departures from LFBL (respectively LFBI) are directly transferred to Bordeaux ACC by Limoges APP (respectively Poitiers APP) if the departure is isolated. However, in case of simultaneous departure from LFBI and LFBL to BALAN, Poitiers APP is responsible for the compatibility of these flights, Poitiers shall then coordinate with Limoges APP to define a resolution.

FOR SIMULATION USE ONLY - NOT VALID FOR REAL OPERATIONS

Departures from LFLX via GUSON are transferred by Poitiers to Limoges on route to GUSON at FL140. If area LF-R7 C is active, Poitiers will transfer this traffic at FL110.

Arrivals and departures from LFLD (respectively LFBU) via CTX (respectively POI or VERAC) are coordinated between Poitiers and Limoges to define the transfer conditions.

3.2.5.5. Flights between Limoges APP and Aquitaine APP

Transits on airways R10 A34 T19 T616 are transferred at their RFL, odd from Limoges to Aquitaine and even from Aquitaine to Limoges. Airways T19 and T616 are only available when LF-R68 B/C are not active.

Departures from LFBL via PERIG or NORON are coordinated by Limoges to determine the transfer Flight Level.

Arrivals to LFBL via PERIG or NORON are coordinated by Aquitaine to determine the transfer Flight Level.

Arrivals and departures from LFSL via Aquitaine airspace are coordinated between Limoges and Aquitaine to determine the transfer conditions.

Arrivals and departures from LFBU via NORON or CNA are coordinated between Limoges and Aquitaine to determine the transfer conditions.

Arrivals and departures from LFBX northbound are coordinated between Limoges and Aquitaine to determine the transfer conditions.

3.2.5.6. Flights between Aquitaine APP and Biarritz APP

Transits are transferred on airway R10 at an odd Flight Level from Aquitaine to Biarritz and at an even Flight Level from Biarritz to Aquitaine.

Flights between Aquitaine TMA and Biarritz TMA are limited to FL110 maximum.

Departures with RFL>145 from Aquitaine bound to VAVIX or ENSAC are transferred to Bordeaux ACC at FL140 and departures with RFL>145 from Biarritz are transferred to Bordeaux ACC at FL130. If a Bordeaux departure cannot reach FL140 at least 10Nm from ENSAC, Bordeaux shall initiate a coordination to Biarritz.

3.2.5.7. Flights between Aquitaine APP and Pyrenees APP

There is no airway defined between Aquitaine and Pyrenees. Thus, all flights shall be coordinated.

When Mont-de-Marsan APP is not active, Aquitaine shall coordinate arrivals to LFBM at least 5 minutes before the boundary, Pyrenees shall coordinate departures from LFBM not later than when the flight is airborne.

3.2.5.8. Flights between Aquitaine APP and Toulouse APP

Transits are transferred on airways G39 R17 A25 A34 at an odd Flight Level from Aquitaine to Toulouse and at an even Flight Level from Toulouse to Aquitaine.

Arrivals and departures from LFBA via SECHE or RUMEL are coordinated between Aquitaine and Toulouse to define the transfer Flight Level.

Arrivals and departures from LFCC via Aquitaine airspace interfering with Toulouse SIV shall be coordinated by Aquitaine (case of departures/arrivals via RUMEL). Those not interfering with Toulouse SIV are limited to FL110 and coordinated between Clermont and Aquitaine.

Departures from LFBE via SECHE are coordinated by Aquitaine to determine the transfer Flight Level. Arrivals to LFBE via RUMEL are coordinated by Toulouse to determine the transfer Flight Level.

FOR SIMULATION USE ONLY - NOT VALID FOR REAL OPERATIONS

3.2.5.9. Flights between Biarritz APP and Pyrenees APP

Transits are transferred on airway G17 at an odd Flight Level from Pyrenees to Biarritz and at an even Flight Level from Biarritz to Pyrenees.

Arrivals to LFBZ LESO are coordinated by Pyrenees to determine the transfer Flight Level, this level should be at or below FL100. These flights are released for descend to 5000ft.

Departures from LFBP LFBT planned via BTZ shall be coordinated by Pyrenees to determine the transfer Flight Level.

Departures from LFBZ via SOVOS and arrivals to LFBP LFBT via SOVOS shall be coordinated by Biarritz to determine the transfer Flight Level. Arrivals are released for descend to 5000ft.

When Mont-de-Marsan APP is not active, arrivals and departures from LFBM via MAGEC shall be coordinated between Pyrenees and Biarritz to determine the transfer conditions (waypoint and Flight Level).

3.2.5.10. Flights between Pyrenees APP and Toulouse APP

Transits are transferred on airways T259 T258 G17 T544 at an odd Flight Level from Toulouse to Pyrenees and at an even Flight Level from Pyrenees to Toulouse.

Departures from LFDH planned through Toulouse airspace are initially cleared to LMT, once airborne Pyrenees coordinates the flight to Toulouse to determine the transfer conditions (waypoint and Flight Level).

Arrivals to LFDH via Toulouse airspace are coordinated by Toulouse to determine the transfer conditions (waypoint and Flight Level).

4. Contributions

This document has been drafted in coordination between the ATC Operations Department of France division and Bordeaux FIR staff.

5. Changelog

Version	Date	Changes
V8.0	19/03/2026	<ul style="list-style-type: none">- New Format- Conditions of exchange- LFBB ACC airspace