



Letter of Agreement (LoA)

Paris ACC (LFFF) and Brest ACC (LFRR)

Name: LoA-LFFF-LFRR_EN

Date: March 19, 2026

Version: v9.0

Validity: Permanent

INDEX

1.	Purpose	2
2.	Areas of Responsibility.....	2
2.1.	Airspace structure and classification within the Area of Common Interest.....	2
2.1.1.	LFFF FIR/UIR	2
2.1.2.	LFRR FIR/UIR	2
2.2.	Sectorisation within the Area of Common Interest.....	3
2.2.1.	LFFF ACC.....	3
2.2.2.	Lille APP.....	4
2.2.3.	Seine APP	5
2.2.4.	LFRR ACC.....	6
2.2.5.	Nantes APP.....	7
2.2.6.	Rennes APP.....	8
2.3.	Special Areas within the Area of Common Interest.....	9
2.3.1.	TRA 8	9
2.3.4.	R7B.....	10
2.3.5.	R10.....	11
2.3.6.	LF-D82.....	12
3.	Procedures for Coordination.....	13
3.1.	General Conditions for Acceptance of Flights	13
3.2.	ATS-Routes, DCTs, Co-Ordination Points and Level Allocation.....	14
3.2.1.	Flights from LFFF ACC to LFRR ACC.....	14
3.2.2.	Flights from LFRR ACC to LFFF ACC.....	15
3.2.3.	Flights from LFFF ACC to Nantes APP	17
3.2.4.	Flights from Nantes APP to LFFF ACC.....	17
3.2.5.	Flights from LFFF ACC to Rennes APP	18
3.2.6.	Flights from Rennes APP to Paris ACC	18
3.2.7.	Flights from Nantes APP to Seine APP	19
3.2.8.	Flights from Seine APP to Nantes APP	19
3.2.9.	Flights from Rennes APP to Lille APP.....	19
3.2.10.	Flights from Lille APP to Rennes APP	19
3.2.11.	Flights from Rennes APP to Seine APP	20
3.2.12.	Flights from Seine APP to Rennes APP	20
4.	Contributions	21
5.	Changelog.....	21

1. Purpose

The purpose of this Letter of Agreement (LoA) is to define the coordination procedures to be applied between **Paris ACC** and **Brest ACC** when providing Air Traffic Services (ATS) under IFR or VFR flight rules.

The content of the agreement is approved by the concerned ATC Operations Department and FIR Chiefs and its application is mandatory for all IVAO members providing ATS within an active position concerned by this LoA.

2. Areas of Responsibility

2.1. Airspace structure and classification within the Area of Common Interest

2.1.1. LFFF FIR/UIR

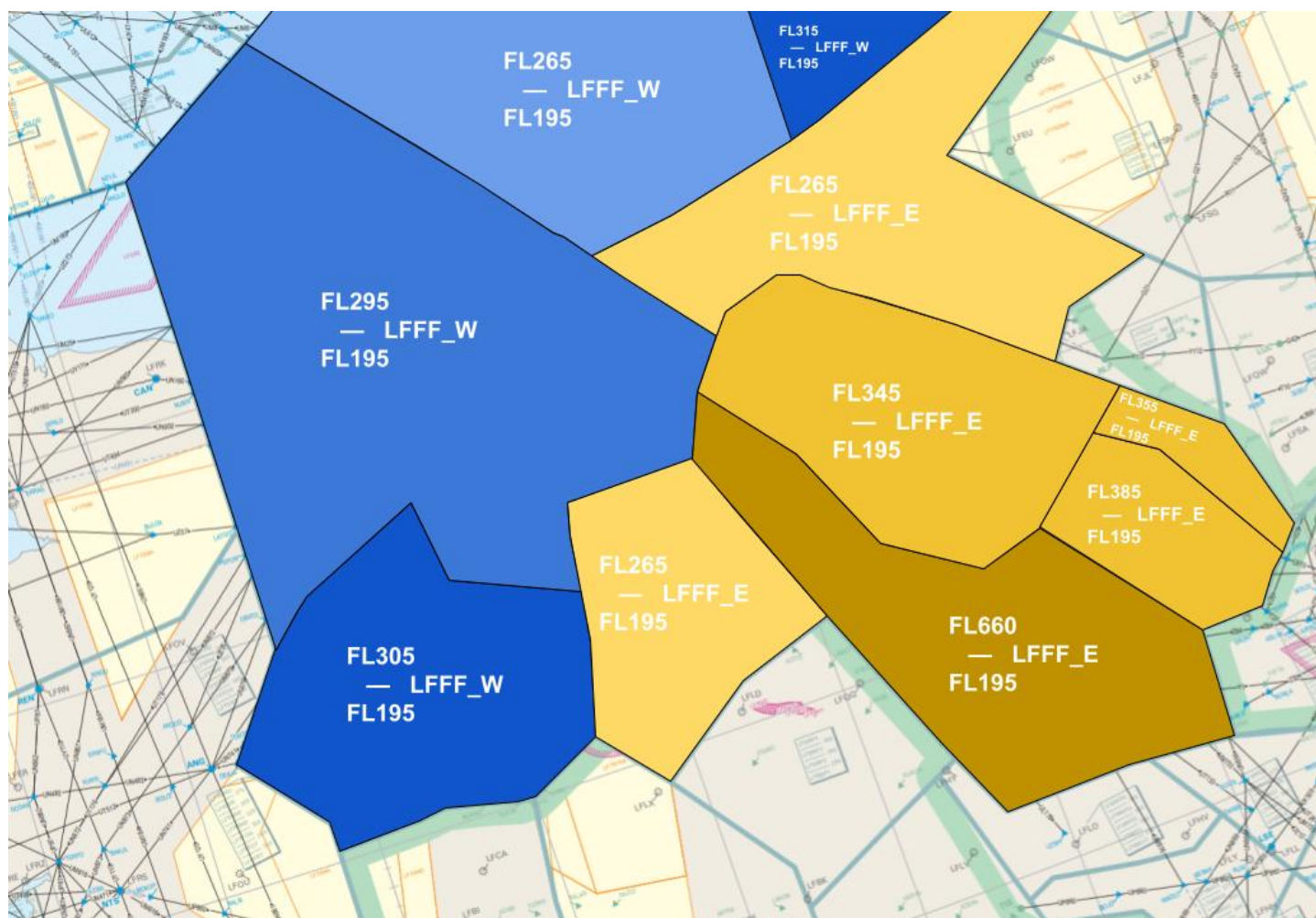
Area	Vertical Limits	Airspace Classification
UIR	Above FL660	G
	FL195/FL660	C
FIR	FL115/FL195	D
	AGL-AMSL/FL115	G outside other classified airspace

2.1.2. LFRR FIR/UIR

Area	Vertical Limits	Airspace Classification
UIR	Above FL660	G
	FL195/FL660	C
FIR	FL115/FL195	D
	AGL-AMSL/FL115	G outside other classified airspace

2.2. Sectorisation within the Area of Common Interest

2.2.1. LFFF ACC



The Paris ACC upper airspace sectorisation is described on the picture above. In the lower airspace, the boundary is defined by the FIR boundary.

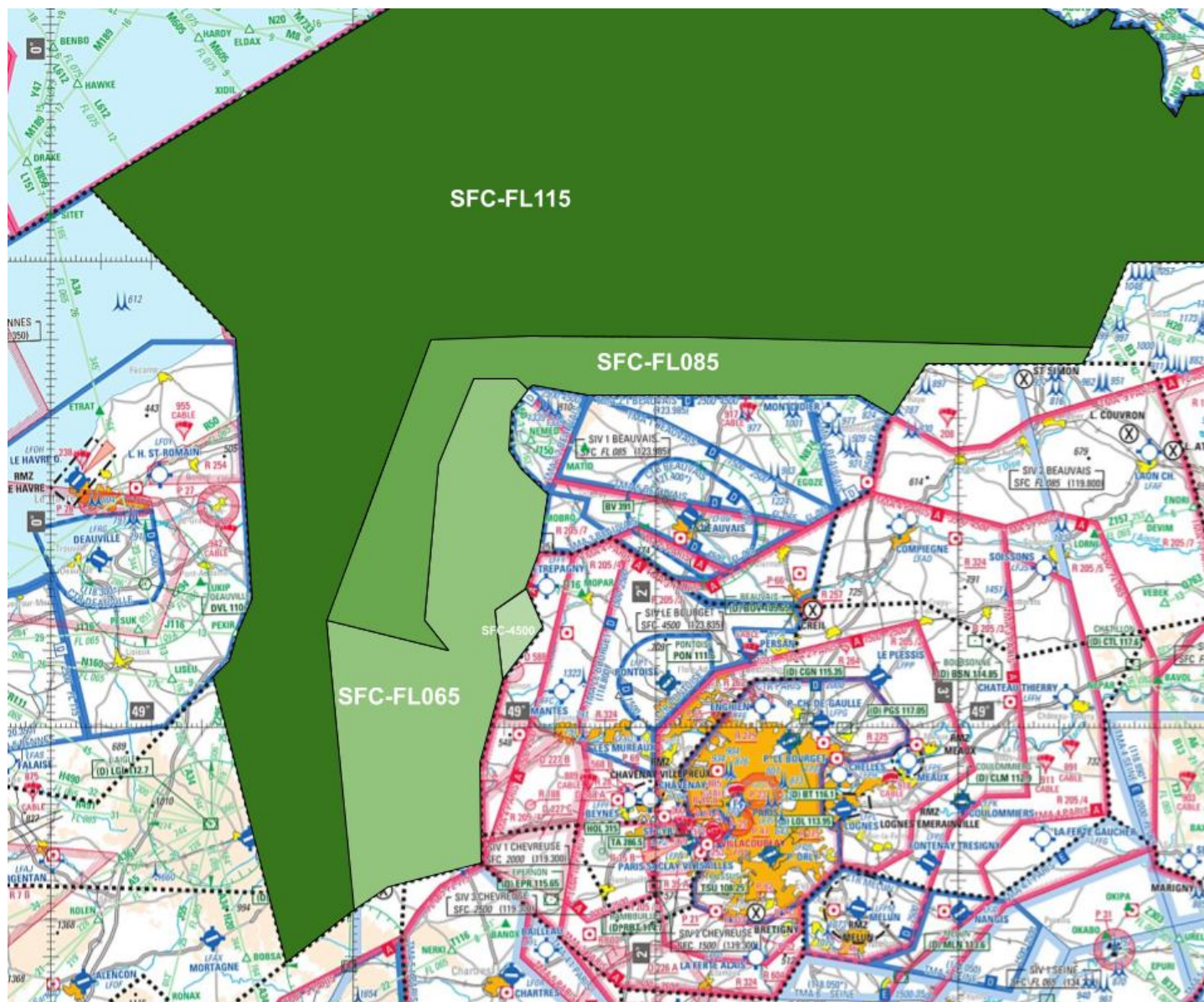
The positions concerned by this LoA are the following:

Position	Identifier	Frequency	Remarks
Primary Sectors			
Paris Control	LFFF_CTR	120.955	
Secondary Sectors			
Paris Control	LFFF_W_CTR	124.850	
Paris Control	LFFF_E_CTR	132.100	

FOR SIMULATION USE ONLY - NOT VALID FOR REAL OPERATIONS

2.2.2 Lille APP

Lille APP Area of Responsibility is depicted by the picture below from SFC to FL115.



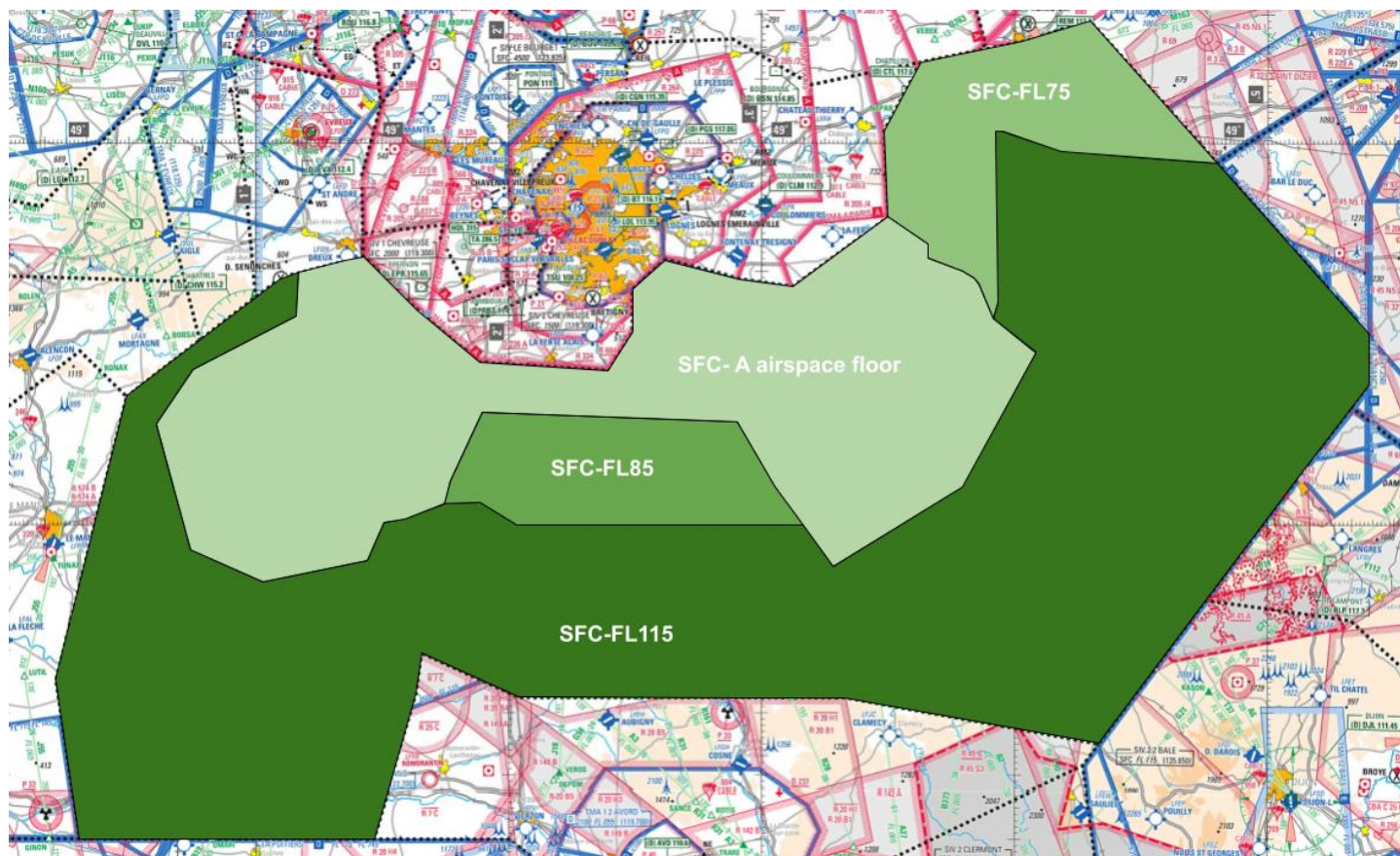
There is only one primary position in charge of Lille APP airspace:

Position	Identifier	Frequency	Remarks
Primary Sectors			
Lille Approach	LFQQ_APP	126.480	

FOR SIMULATION USE ONLY - NOT VALID FOR REAL OPERATIONS

2.2.3. Seine APP

Seine APP Area of Responsibility is depicted by the picture below from SFC to FL115.



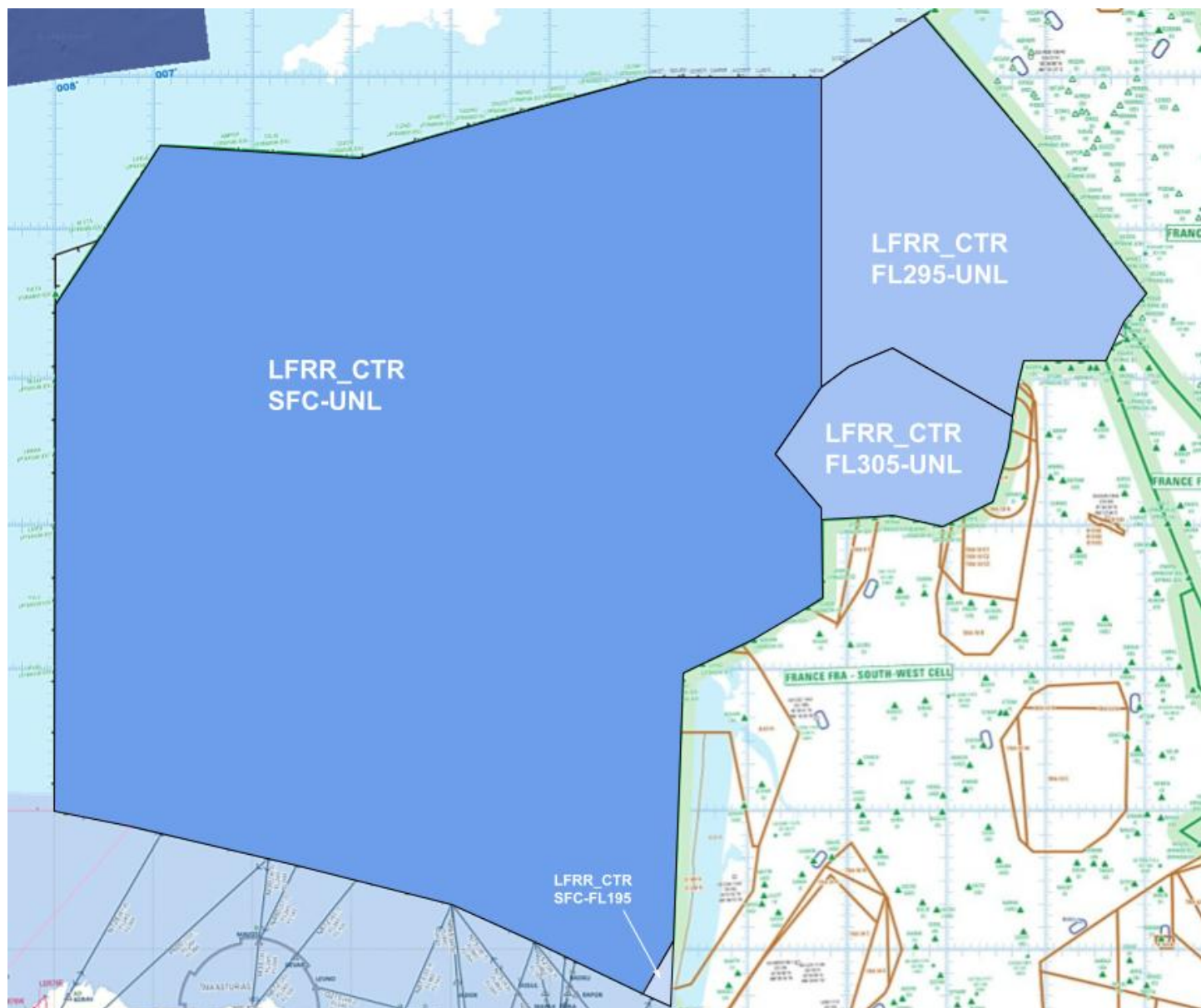
There is only one primary position in charge of Seine APP airspace:

Position	Identifier	Frequency	Remarks
Primary Sectors			
Seine Approach	LFFM_APP	118.050	

FOR SIMULATION USE ONLY - NOT VALID FOR REAL OPERATIONS

2.2.4. LFRR ACC

The French airspace at the interface between Paris and Brest is described in the picture below.



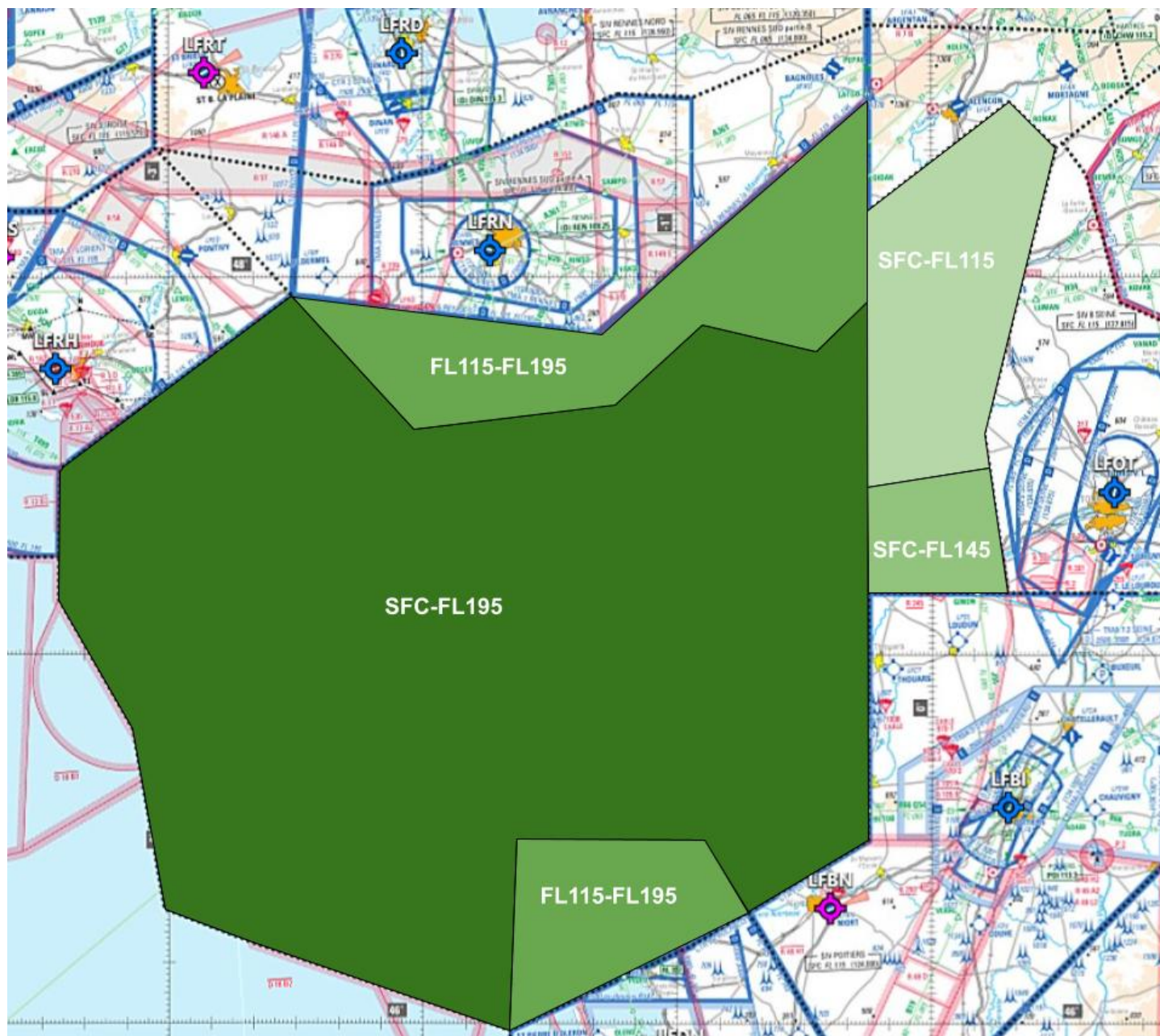
Brest ACC positions concerned by this LoA are the following:

Position	Identifier	Frequency	Remarks
Primary Sectors			
Brest Control	LFRR_CTR	132.830	

FOR SIMULATION USE ONLY - NOT VALID FOR REAL OPERATIONS

2.2.5. Nantes APP

Nantes APP Area of Responsibility is depicted by the picture below from SFC to FL195.



There is only one primary position in charge of Nantes APP airspace:

Position	Identifier	Frequency	Remarks
Primary Sectors			
Nantes Approach	LFRS_APP	124.430	

FOR SIMULATION USE ONLY - NOT VALID FOR REAL OPERATIONS

2.2.6. Rennes APP

Rennes APP Area of Responsibility is depicted by the picture below from SFC to FL195.



There is only one primary position in charge of Rennes APP airspace:

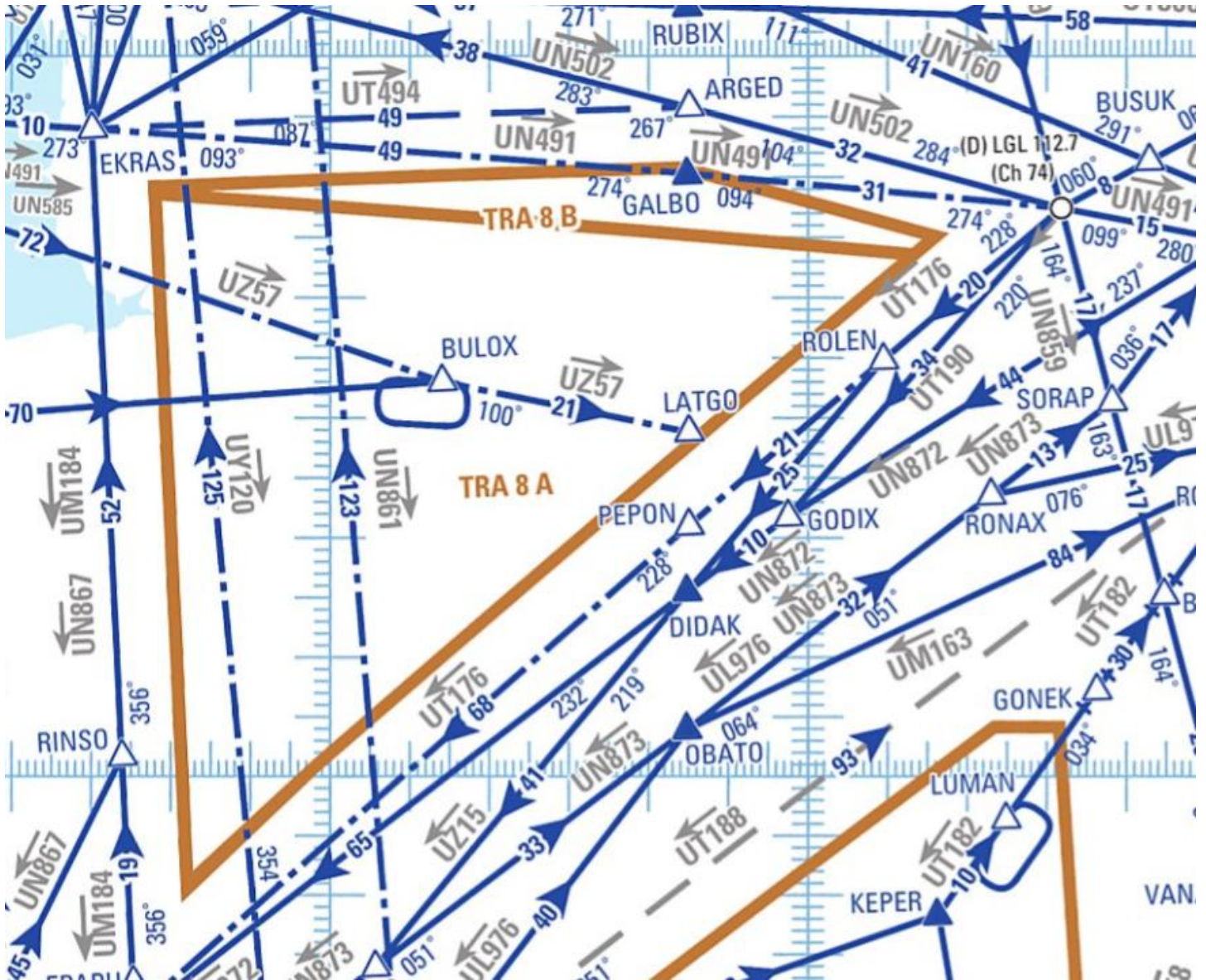
Position	Identifier	Frequency	Remarks
Primary Sectors			
Rennes Approach	LFRN_APP	134.000	

FOR SIMULATION USE ONLY - NOT VALID FOR REAL OPERATIONS

2.3. Special Areas within the Area of Common Interest

2.3.1. TRA 8

This area is defined from FL195 to FL335. Its lateral limits are described in the picture below.



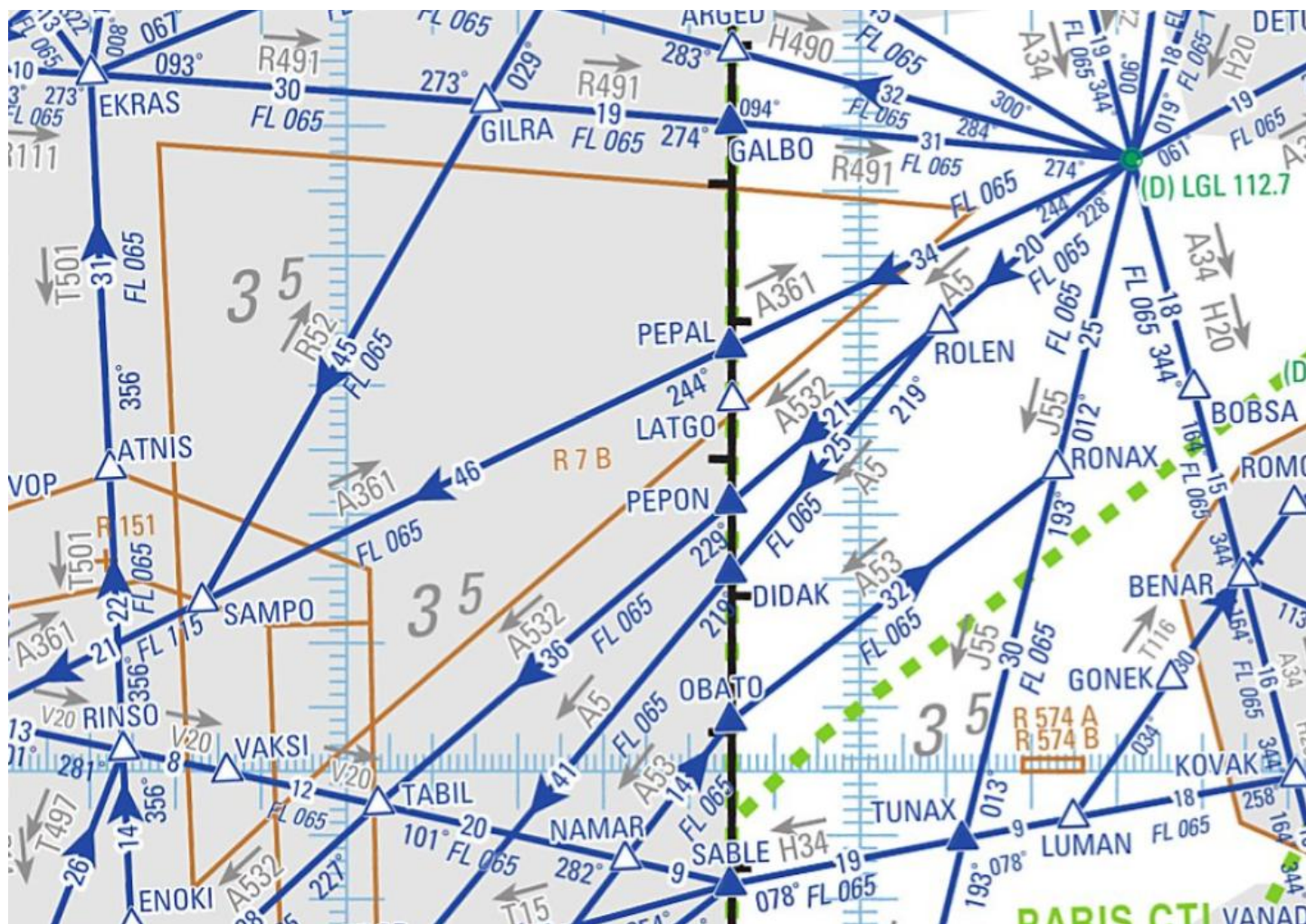
In case of activity, the route UZ57 BULOX-LATGO is no longer available.

When TRA 8B is active, flights planned via LGL-GALBO-EKRAS shall be rerouted via LGL-ARGED-EKRAS.

FOR SIMULATION USE ONLY - NOT VALID FOR REAL OPERATIONS

2.3.4. R7B

This area is defined from FL115 to FL195. Its lateral limits are described in the picture below.



In case of activity, traffic with destination LFRN via PEPAL shall be rerouted via GALBO.

FOR SIMULATION USE ONLY - NOT VALID FOR REAL OPERATIONS

3. Procedures for Coordination

3.1. General Conditions for Acceptance of Flights

Coordination of flights shall take place by reference to the COP for the relevant route and in accordance with the appropriate flight levels specified in paragraph 3.2.

Flights shall be considered to be maintaining the coordinated flight level at the transfer of control point unless climb or descent conditions have been clearly stated by either the LoA conditions or a text/verbal coordination.

If the accepting ATS unit cannot accept a flight offered in accordance with the conditions specified in the LoA, it shall clearly indicate its inability and specify the conditions under which the flight will be accepted.

For any proposed deviation from the conditions specified in 3.2 (COP, route, FL), the transferring unit shall initiate an approval request.

Traffics shall be transferred as soon as possible, clear of any conflicting traffic.

Silent Radar Handover are possible with a minimal separation of 10Nm and required if the longitudinal separation is less than 20Nm. In that case, the transferring ATS unit shall assign speeds/Mach numbers to both aircraft, the speed of the number one needs to be greater or equal to the speed of the second. Pilots shall report their assigned speed to the receiving ATS unit at the first contact.

3.2. ATS-Routes, DCTs, Co-Ordination Points and Level Allocation

3.2.1. Flights from LFFF ACC to LFRR ACC

ATS-Route or DCT	COP	Flight Level Allocation	Special Conditions	Reference
UN160	CAN	Even	Only ARR EGJ*	
UT300	RUBIX	Even		3.2.1.3.
		FL290	DEP LFPG LFPB LFPT LFOB	
UN502	ARGED	Even		3.2.1.3.
UN491	GALBO	Even	Not available if TRA8B active	
		FL290	DEP Paris Group	3.2.1.1.
		FL230	ARR LFRN LFRD LFRT	
UT176	PEPON	Odd		
UN872	DIDAK	Odd		
UT190	GODIX	Odd		
UZ15	DIDAK	Odd	Only ARR Nantes Group LFBH	
		FL270	ARR Nantes Group	3.2.1.2.
UN858	VANAD	Even		
UM729	AMODO	Even		
UH10	AMODO	Even		
UT494	ARGED	Even	Only used when TRA8B active	

3.2.1.1.

Paris Group = LFPB LFPG LFPN LFPO LFPT LFPV LFOB

3.2.1.2.

Nantes Group = LFRE LFRJ LFRS LFRZ LFFI LFOU LFEY

These flights are released for descent

3.2.1.3.

Paris ACC is responsible for the compatibility of traffic converging at SENLO on routes ELCOB-SENLO and LGL-SENLO.

3.2.1.4.

Traffic with destination EGJ* LFRC LFOV LFJR shall avoid Brest ACC airspace, these flights are coordinated between Paris ACC and Nantes or Rennes APP.

3.2.1.5.

All ATS routes in Paris ACC located below Brest ACC sectors except UM605 are available as climb/descend routes.

FOR SIMULATION USE ONLY - NOT VALID FOR REAL OPERATIONS

3.2.2. Flights from LFRR ACC to LFFF ACC

ATS-Route or DCT	COP	Flight Level Allocation	Special Conditions	Reference
UM25	INGOR	Odd		3.2.2.1.
		FL280	ARR LFPG	
UZ297	INGOR	Odd		3.2.2.1.
		FL280	ARR LFPT LFPB	
		FL260	ARR LFOB	
UN160	CAN	Odd	FL270 and FL290 forbidden	
UN491	GALBO	Odd	FL290 forbidden	
		FL270	On coordination ARR Lille Group EBCV EBKT LFOK LFQA LFQB LFLA	3.2.2.6.
		FL200	ARR LFAI LFPM LFPN LFPO LFPV	
	TEPRI	Odd	Forbidden ARR LFJL	
UT494	ARGED	Odd	Only when TRA8B is active	
UL976	OBATO	Even		3.2.2.2.
		FL280	DEP LFRS LFRZ ARR Lille Group EBCV EBKT LFOK LFQA LFQB LFLA	3.2.2.6.
		FL240	ARR LFRG	
		FL220	DEP LFRN LFRD LFRT	
UN873	OBATO	Even		
		FL260	ARR LFOB LFPT	
UN741	ANG	FL300	ARR LFPG LFPB only	3.2.2.3.
UN482	ANG	FL280	ARR LFPO LFPN LFPV LFAI LFPM	3.2.2.4.
UN859	ETRAT, VANAD	Odd	Forbidden ARR LFPG LFPB LFPT	
		FL270 max	ARR LFPO LFPN LFPV LFPM LFAI LFOT LFBI LFB LFBX LFLX LFJR LFOJ LFRM	
UL612	VEULE, ODEBU	Odd		3.2.2.5.
UZ57	LATGO	FL260	ARR LFPG (if TRA8 not active)	
UM975	PEKIM	Odd		
		FL310	ARR LFSD	
UN858	VANAD	Even		
UN874	VANAD	Even		
		FL300	ARR Lille Group EBCV EBKT	3.2.2.8. 3.2.2.6.

FOR SIMULATION USE ONLY - NOT VALID FOR REAL OPERATIONS

- 3.2.2.1.
Flight Levels 210, 230, 250, 260 and 280 are available on these routes.
- 3.2.2.2.
Flights departing LFRN LFRD LFRT LFRS LFRZ with destination LFPB LFPG LFPN LFPO LFPT LFPV LFOB via OBATO shall not enter Brest ACC airspace, these flights are transferred by Nantes/Rennes APP to Paris ACC.
- 3.2.2.3.
On this route, Flight Levels 290 280 270 260 240 220 200 are available after coordination for LFPG LFPB arrivals.
- 3.2.2.4.
On this route, Flights Levels 270 260 240 220 200 are available after coordination for LFPO LFPN LFPV LFAI LFPM arrivals. In case of simultaneous arrivals, traffic with destination LFPN LFPV shall be transferred below traffic with destination LFPO.
- 3.2.2.5.
Traffic with departure EGHH EGHI EGGW EGKB EGKK EGLC EGLL EGMC EGTO EGWU EGHL EGLF EGLK EGTD EGTF EGVO and with arrival LFHJ LFHS LFHV LFHW LFKL LFKY LFLG LFLM LFLS LFLU LFLY LFMH LFXA LFGM LFGN LFHY LFLN LFLO LFQF LFGC LFQP LFST EDSB EDSK EDSW EDTB EDTL EDTO LFHM LFHU LFKA LFKX LFLB LFLE LFLJ LFLP LFGA LFGB LFSB LFSM LSZH LSMD LFLX shall not enter Brest ACC airspace. Thus, these flights are limited to FL290 maximum.
- 3.2.2.6.
Lille Group = LFAC LFAQ LFAT LFAV LFAY LFQQ LFQO LFQT
- 3.2.2.7.
All ATS routes in Brest ACC located above Paris ACC sectors except UM605 are available as climb/descend routes.
- 3.2.2.8.
Traffic with destination Lille Group EBCV EBKT via VANAD-VADOM-PIGOP-BAMES with RFL>305 shall be transferred by Brest ACC to Paris ACC descending to FL300 to levelled 10Nm before VADOM. These traffic shall not enter Reims ACC airspace. Paris ACC shall continue the descend to leave Brest ACC airspace before VADOM.

3.2.3. Flights from LFFF ACC to Nantes APP

ATS-Route or DCT	COP	Flight Level Allocation	Special Conditions	Reference
J55	RONAX	FL120 at RONAX	ARR LFJR LFAL LFRM LFOD	
H34	LUMAN	FL120 at LUMAN	ARR LFJR LFAL LFOD	
J55 H34	TUNAX	FL120 at TUNAX	ARR LFOV	
H34	SABLE	Odd		
A5	DIDAK	Odd	Forbidden ARR LFRN with	
A532	PEPON	odd	RFL>115	

3.2.4. Flights from Nantes APP to LFFF ACC

ATS-Route or DCT	COP	Flight Level Allocation	Special Conditions	Reference
J55	RONAX	FL110	DEP LFJR LFAL LFRM LFOD	
H34	LUMAN	FL110	DEP LFJR LFAL LFOD	
A53	OBATO	Even		
		FL110	DEP LFOV	
H34	SABLE	Even		
		FL110	DEP LFOV	
V20	SABLE	Even		3.2.4.1.

3.2.4.1

V20 is mandatory for flight with departure LFRN LFRD LFRT and destination LFPB LFPG LFPN LFPO LFPT LFPV LFOB. These flights are limited to FL180 maximum.

3.2.5. Flights from LFFF ACC to Rennes APP

ATS-Route or DCT	COP	Flight Level Allocation	Special Conditions	Reference
A5	DIDAK	Odd		
		FL120 at ROLEN	ARR LFOV	
A532	PEPON	Odd		
A361	PEPAL	Even	ARR LFRN with RFL<195	
R491	GALBO	Even	ARR LFRN with RFL<195 if R7B active	
H490	ARGED	Even		
R111 N160 R50	CAN	Even		3.2.5.1.
		FL180	ARR LFRC	
V3	DIKRO	Even		
		FL180	ARR LFRC	
A34 H20	BOBSA	Even		
		FL100 at BOBSA	ARR LFOE	
	DVL	FL120	ARR LFRG LFOH via LGL/OKRUZ with RFL>115	
	CAN	FL120	ARR LFRK via LGL/OKRUZ with RFL>115	

3.2.5.1.

Paris ACC is responsible for the compatibility of traffic converging to CAN via R111, N160 and R50.

3.2.6. Flights from Rennes APP to Paris ACC

ATS-Route or DCT	COP	Flight Level Allocation	Special Conditions	Reference
R491	GALBO	Odd		
R111 N160 R50	CAN	Odd		
		FL190	DEP LFRC	
J116	CAN	Even	ARR LFPG LFPB LFPT LFOB only	
		FL180	DEP EGJ* LFRC	
V20	DVL	Even		
A34 H20	BENAR	Odd		
N160	LISEU	FL110	DEP LFOE LFOP	
A361	LGL			
	LGL OKRUZ	FL110	DEP LFRG LFOH LFRK	3.2.6.1.

3.2.6.1.

DEP LFRG LFOH may require a coordination from Rennes APP to Lille APP in case of slow climb.

3.2.6.2.

Rennes APP is responsible for the compatibility of traffic converging to LGL on routes GALBO-LGL and CAN-LGL.
Rennes APP is responsible for the compatibility at LGL of traffic departing from LFOE LFOP LFRG LFOH LFRK.

FOR SIMULATION USE ONLY - NOT VALID FOR REAL OPERATIONS

3.2.7. Flights from Nantes APP to Seine APP

ATS-Route or DCT	COP	Flight Level Allocation	Special Conditions	Reference
H34	LUMAN	Even		
		FL070	DEP LFRM	

3.2.7.1

Traffic arriving to LFOT shall be coordinated to determine transfer conditions.

3.2.8. Flights from Seine APP to Nantes APP

ATS-Route or DCT	COP	Flight Level Allocation	Special Conditions	Reference
H34	LUMAN	Odd		
		FL080	ARR LFRM	
		FL070	DEP LFRM	

3.2.8.1

Traffic departing from LFOT shall be coordinated to determine transfer conditions.

3.2.9. Flights from Rennes APP to Lille APP

ATS-Route or DCT	COP	Flight Level Allocation	Special Conditions	Reference
ATS-Route or DCT	COP	Flight Level Allocation	Special Conditions	Reference
A361	LGL	Odd		
H20	LGL	Even		
N160	LISEU	Odd		
R50	OKRUZ	Odd		
J116	PEXIR	Even	ARR LFPG LFPB LFPT only	
J251	PEXIR	Even	ARR LFOB only	

3.2.9.1.

Flights departing from LFRG LFOH via ELBOX (ARR LFOP only with RFL<115) shall be coordinated by Rennes APP to Lille APP. Flights with destination LFOE via BOBSA-LGL shall be coordinated by Rennes APP to Lille APP to determine transfer conditions.

3.2.10. Flights from Lille APP to Rennes APP

ATS-Route or DCT	COP	Flight Level Allocation	Special Conditions	Reference
A361	LGL	Even		
H20	LGL	Odd		
N160	BERNO	Even		
R50	OKRUZ	Even		

3.2.10.1.

Flights departing from LFOP LFOE via LGL or CAN shall be coordinated by Lille APP to Rennes APP to determine transfer conditions.

FOR SIMULATION USE ONLY - NOT VALID FOR REAL OPERATIONS

3.2.11. Flights from Rennes APP to Seine APP

ATS-Route or DCT	COP	Flight Level Allocation	Special Conditions	Reference
A34 H20	BENAR	FL070 (odd)		

3.2.12. Flights from Seine APP to Rennes APP

ATS-Route or DCT	COP	Flight Level Allocation	Special Conditions	Reference
A34 H20	BOBSA	FL080 (even)		

4. Contributions

This document has been drafted in coordination between the ATC Operations Department of France division and Paris FIR staff and Brest FIR staff.

5. Changelog

Version	Date	Changes
V9.0	19/03/2026	<ul style="list-style-type: none">- New Format- Conditions of exchange- LFRR ACC airspace- LFFF ACC airspace