



Letter of Agreement (LoA)

Roma ACC (LIRR) and Marseille ACC (LFMM)

Name: LoA-LIRR-LFMM_EN

Date: March 19, 2026

Version: v7.0

Validity: Permanent

INDEX

1.	Purpose	2
2.	Areas of Responsibility.....	2
2.1.	Airspace structure and classification within the Area of Common Interest.....	2
2.1.1.	LIRR FIR/UIR.....	2
2.1.2.	LFMM FIR/UIR.....	2
2.2.	Sectorisation within the Area of Common Interest.....	3
2.2.1.	LIRR ACC.....	3
2.2.2.	LFMM ACC.....	4
2.2.3.	Ajaccio APP.....	5
2.2.4.	Bastia APP.....	6
2.3.	Special Areas within the Area of Common Interest.....	7
2.3.1.	LI-D67 Solenzara	7
2.3.2.	LI-D29 Pianosa	7
3.	Procedures for Coordination.....	8
3.1.	General Conditions for Acceptance of Flights	8
3.2.	ATS-Routes, DCTs, Co-Ordination Points and Level Allocation.....	9
3.2.1.	Flights from LIRR ACC to LFMM ACC.....	9
3.2.2.	Flights from LFMM ACC to LIRR ACC.....	10
3.2.3.	Flights from LIRR ACC to LFKJ APP	11
3.2.4.	Flights from LFKJ APP to LIRR ACC	11
3.2.5.	Flights from LIRR ACC to LFKB APP.....	12
3.2.6.	Flights from LFKB APP to LIRR ACC	12
4.	Contributions	13
5.	Changelog.....	13

1. Purpose

The purpose of this Letter of Agreement (LoA) is to define the coordination procedures to be applied between **Roma ACC** and **Marseille ACC** when providing Air Traffic Services (ATS) under IFR or VFR flight rules.

The content of the agreement is approved by the concerned ATC Operations Department and FIR Chiefs and its application is mandatory for all IVAO members providing ATS within an active position concerned by this LoA.

2. Areas of Responsibility

2.1. Airspace structure and classification within the Area of Common Interest

2.1.1. LIRR FIR/UIR

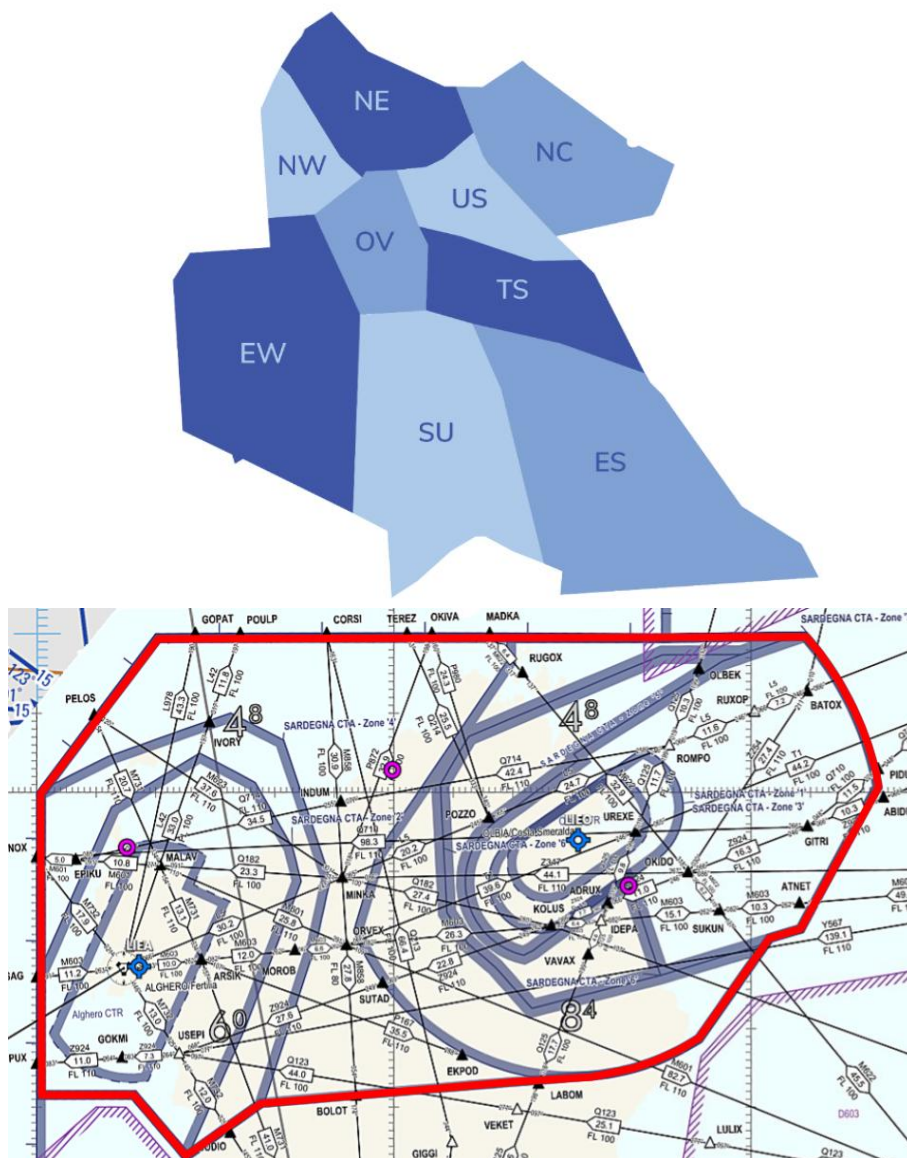
Area	Vertical Limits	Airspace Classification
UIR	Above FL660	G
	FL195/FL660	C
FIR	FL105/FL195	D
	AGL-AMSL/FL105	E in Airway or G

2.1.2. LFMM FIR/UIR

Area	Vertical Limits	Airspace Classification
UIR	Above FL660	G
	FL195/FL660	C
FIR	FL115/FL195	D except in LTA
	AGL-AMSL/FL115	G outside other classified airspace

2.2. Sectorisation within the Area of Common Interest

2.2.1. LIRR ACC

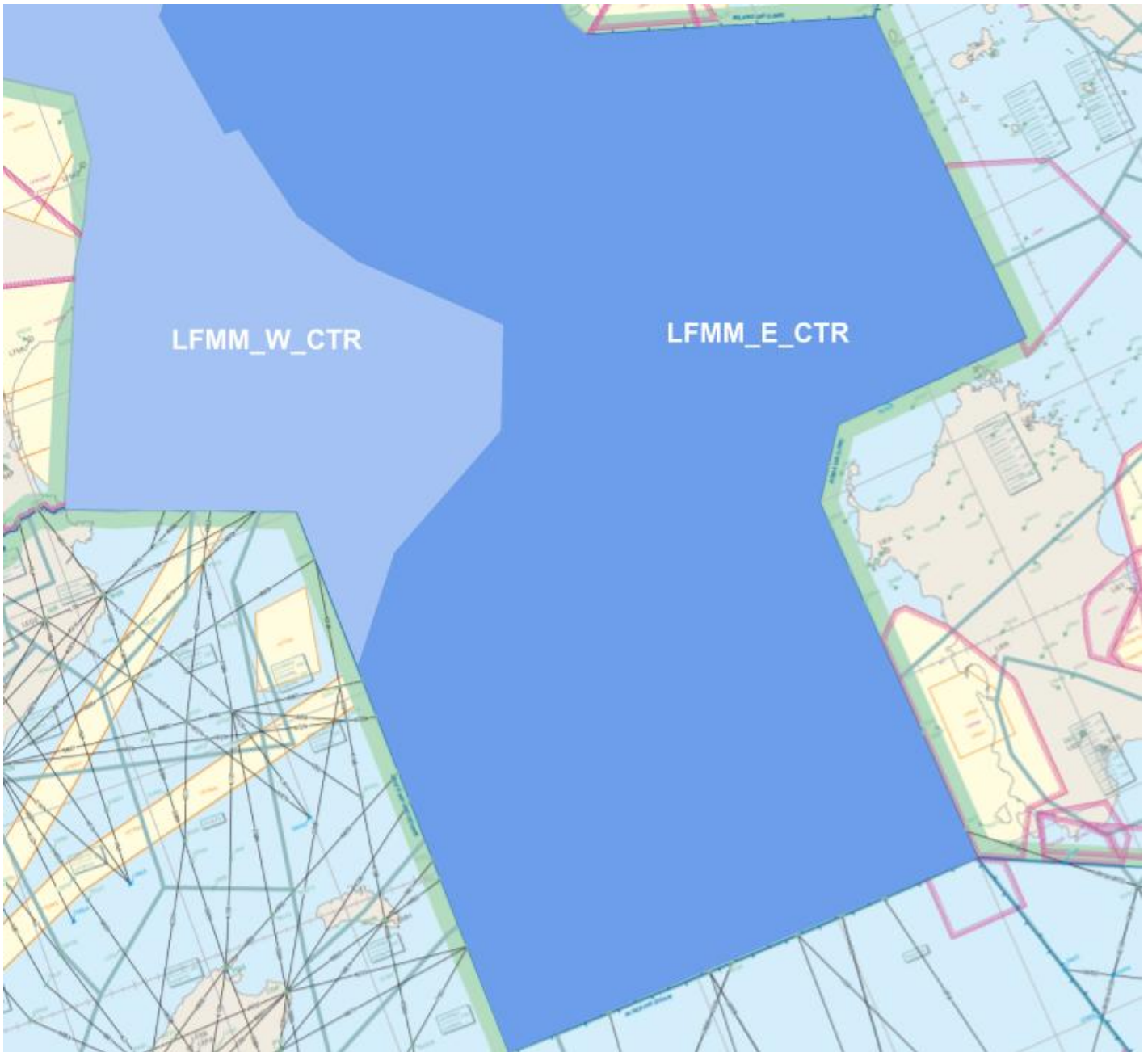


The Roma ACC airspace is described on the picture above.
 The sector EW0 (below FL105) is described on the bottom picture.
 When only LIRR_NE_CTR is open, its airspace covers sectors NW.
 The positions concerned by this LOA are the following:

Position	Identifier	Frequency	Remarks
Primary Sectors			
Roma Radar (NE)	LIRR_NE_CTR	124.200	
Roma Radar (EW)	LIRR_EW_CTR	127.125	
Roma Radar (EW0)	LIEO_EW0_APP	125.950	(SFC-FL105)
Secondary Sectors			
Roma Radar (NW)	LIRR_NW_CTR	124.800	

FOR SIMULATION USE ONLY - NOT VALID FOR REAL OPERATIONS

2.2.2. LFMM ACC



The Marseille ACC airspace is described on the picture above.

The positions concerned by this LOA are the following:

Position	Identifier	Frequency	Remarks
Primary Sectors			
Marseille Control (East)	LFMM_E_CTR	127.905	

FOR SIMULATION USE ONLY - NOT VALID FOR REAL OPERATIONS

2.2.3. Ajaccio APP



The Ajaccio Approach airspace is described on the picture above.

Position	Identifier	Frequency	Remarks
Ajaccio Approach	LFKJ_APP	121.050	

FOR SIMULATION USE ONLY - NOT VALID FOR REAL OPERATIONS

2.2.4. Bastia APP



The Bastia Approach airspace is described on the picture above.

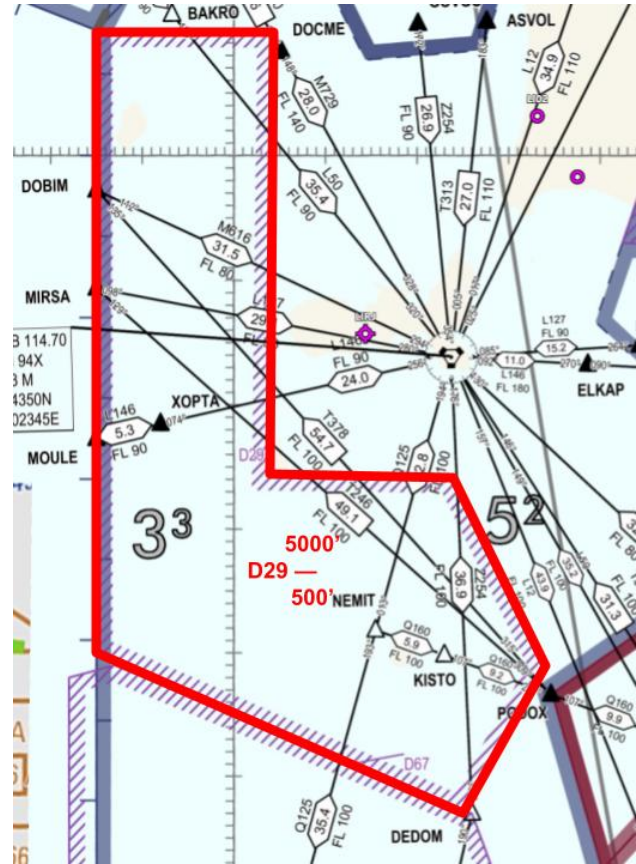
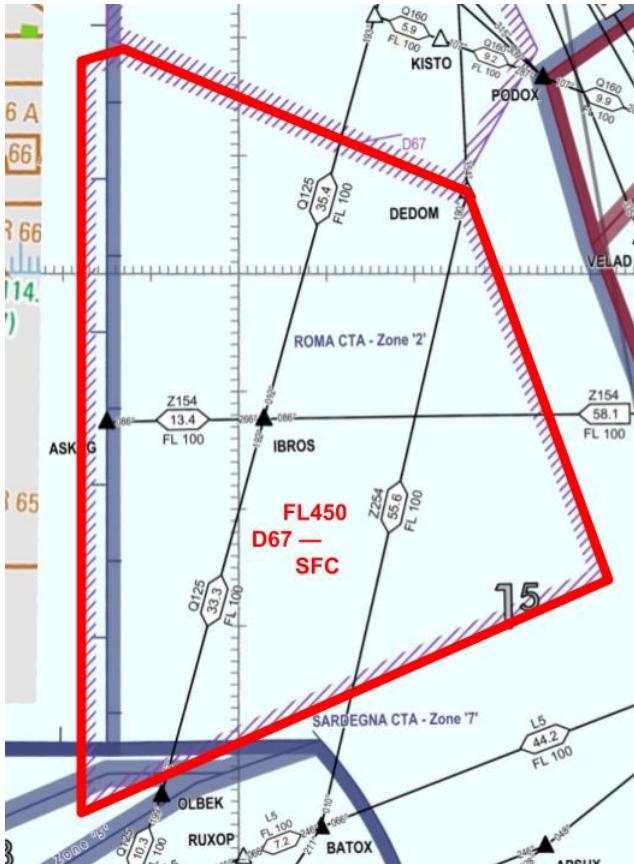
Position	Identifier	Frequency	Remarks
Bastia Approach	LFKB_APP	123.825	

FOR SIMULATION USE ONLY - NOT VALID FOR REAL OPERATIONS

2.3. Special Areas within the Area of Common Interest

2.3.1. LI-D67 Solenzara

Roma ACC shall inform Marseille ACC and Ajaccio APP of LI-D67 activity.



2.3.2. LI-D29 Pianosa

Roma ACC shall inform Bastia APP of LI-D29 activity.

FOR SIMULATION USE ONLY - NOT VALID FOR REAL OPERATIONS

3. Procedures for Coordination

3.1. General Conditions for Acceptance of Flights

Coordination of flights shall take place by reference to the COP for the relevant route and in accordance with the appropriate flight levels specified in paragraph 3.2.

Flights shall be considered to be maintaining the coordinated flight level at the transfer of control point unless climb or descent conditions have been clearly stated by either the LoA conditions or a text/verbal coordination.

If the accepting ATS unit cannot accept a flight offered in accordance with the conditions specified in the LoA, it shall clearly indicate its inability and specify the conditions under which the flight will be accepted.

For any proposed deviation from the conditions specified in 3.2 (COP, route, FL), the transferring unit shall initiate an approval request.

Traffics shall be transferred as soon as possible, clear of any conflicting traffic.

Silent Radar Handover are possible with a minimal separation of 10Nm and required if the longitudinal separation is less than 20Nm. In that case, the transferring ATS unit shall assign speeds/Mach numbers to both aircraft, the speed of the number one needs to be greater or equal to the speed of the second. Pilots shall report their assigned speed to the receiving ATS unit at the first contact.

3.2. ATS-Routes, DCTs, Co-Ordination Points and Level Allocation

3.2.1. Flights from LIRR ACC to LFMM ACC

ATS-Route or DCT	COP	Flight Level Allocation	Special Conditions	Reference
M616, T378, FRA	DOBIM	Even		
		FL340	ARR LFMN LFMD LFMF LFTZ	
L127, T246, FRA	MIRSA	Even		
		FL340	ARR LFMC LFTF LFTH	
L146	MOULE	Even		
		FL190	ARR LFKJ LFKO LFKF	
Z154	ASKAG	Even		
M622, FRA	MADKA	Even		3.2.1.1.
		FL340	ARR LFMN LFMD LFTZ	
P980, P872, FRA	OKIVA	Even		
		FL220	DEP LIEO	
Q214	TEREZ	Even		
M858, Q213, FRA	CORSI	Even		3.2.1.1.
		FL340	ARR LFMN LFMD LFTZ	
L42	POULP	Even		
L978, FRA	GOPAT	Even		
		FL220	DEP LIEA	
M732, FRA	GINOX-OKSER	Even		
Q714, Q710, Q182, FRA	GINOX	Odd		
		On Coordination	DEP LIEA	
Z924, FRA	SUPUX	Odd		
		On Coordination	DEP LIEA	
FRA	XATOS	Odd		
M739	TABOT	Even		

3.2.1.1.

Roma ACC is responsible for the compatibility of flights converging to AJO via CORSI or MADKA.

3.2.2. Flights from LFMM ACC to LIRR ACC

ATS-Route or DCT	COP	Flight Level Allocation	Special Conditions	Reference
R16	DOBIM	Odd		3.2.2.1.
A3	MIRSA	Odd		3.2.2.1.
LI46, FRA	MOULE	Odd		3.2.2.1.
		FL290	ARR LIRF LIRA LIRU LIRE	
		FL270	ARR LIRQ	
		FL230	ARR LIRS	
		FL190	ARR LIRP	
FRA	DOKAR	Odd		
Z154	ASKAG	Odd		
FRA, A9	CORSI	Odd		3.2.2.2.
		FL170	ARR LIEO	
M194	REVDO	Odd		3.2.2.2.
		FL170	ARR LIEA	
Y19, M623, M731, Z240, FRA	PELOS	Odd		
		FL210	ARR LIEO	
		FL150	ARR LIEA	
M603, FRA	ELSAG	Even		
		FL300	ARR LIEE LIED	
		FL180	ARR LIEO	
		FL160	ARR LIEA	
FRA	XATOS	Even		
		FL300	ARR LIEE LIED	
M739	TABOT	Odd		

3.2.2.1.

Marseille ACC is responsible for the compatibility of flights converging to ELB via DOBIM, MIRSA and MOULE.

3.2.2.2.

Marseille ACC must consider flights via CORSI and REVDO as a single flow.

3.2.3. Flights from LIRR ACC to LFKJ APP

ATS-Route or DCT	COP	Flight Level Allocation	Special Conditions	Reference
L42	POULP	Even		3.2.3.1.
		FL120	DEP LIEA with ARR LFKJ/LFKF/LFKO/LFKS	
J19	TEREZ	Even		3.2.3.1.
		FL120	DEP LIEO with ARR LFKJ/KO/KS	
		FL100	DEP LIEO with ARR LFKF	
M623, M731	PELOS	Even		
Z154	ASKAG	Even	Available when D67 inactive	

3.2.3.1.

Roma ACC is responsible for the compatibility of flights converging to AJO via TEREZ or POULP.

3.2.4. Flights from LFKJ APP to LIRR ACC

ATS-Route or DCT	COP	Flight Level Allocation	Special Conditions	Reference
A9, M858	CORSI	Odd		
		FL130	ARR LIEA LIEO with DEP LFKJ LFKO LFKS	
		FL110	ARR LIEA LIEO with DEP LFKF	
M623, M731	PELOS	Odd		
Z154	ASKAG	Odd	Available when D67 inactive	

3.2.5. Flights from LIRR ACC to LFKB APP

ATS-Route or DCT	COP	Flight Level Allocation	Special Conditions	Reference
R16, M616	DOBIM	Even	Transits	
		FL130	ARR LFKB	
A3, L127	MIRSA	Even	Transits	
		FL130	ARR LFKC	
		FL110	DEP LIRJ	
L146	MOULE	Odd	Transits	
		FL130	ARR LFKB LFKS	
		FL110	DEP LIRJ	

3.2.6. Flights from LFKB APP to LIRR ACC

ATS-Route or DCT	COP	Flight Level Allocation	Special Conditions	Reference
R16, M616	DOBIM	Odd	Transits	
		FL120	DEP LFKB	
A3, L127	MIRSA	Odd	Transits	
		FL120	DEP LFKC	
L146	MOULE	Even	Transits	
		FL140	DEP LFKS	
		FL120	DEP LFKB	
		FL100	ARR LIRJ	

4. Contributions

This document has been drafted in coordination between the ATC Operations Department of Italia and France and Roma FIR staff and Marseille FIR staff.

5. Changelog

Version	Date	Changes
V7.0	19/03/2026	<ul style="list-style-type: none">- New Format- Conditions of exchange- LFMM ACC airspace