



Letter of Agreement (LoA)

Madrid ACC (LECM) and Brest ACC (LFRR)

Name: LoA-LECM-LFRR_EN

Date: April 20, 2026

Version: v8.0

Validity: Permanent

INDEX

| | |
|--|----|
| 1. Purpose | 2 |
| 2. Areas of Responsibility..... | 2 |
| 2.1. Airspace structure and classification within the Area of Common Interest..... | 2 |
| 2.1.1. LECM FIR/UIR | 2 |
| 2.1.2. LFRR FIR/UIR | 2 |
| 2.2. Sectorisation within the Area of Common Interest..... | 3 |
| 2.2.1. LECM ACC..... | 3 |
| 2.2.2. LFRR ACC | 5 |
| 2.3. Special Areas within the Area of Common Interest | 6 |
| 2.3.1. LF-D32/LF-D33 | 6 |
| 2.3.2. LF-D300A/B..... | 7 |
| 3. Procedures for Coordination | 8 |
| 3.1. General Conditions for Acceptance of Flights | 8 |
| 3.2. ATS-Routes, DCTs, Co-Ordination Points and Level Allocation..... | 9 |
| 3.2.1. Flights from LECM ACC to LFRR ACC..... | 9 |
| 3.2.2. Flights from LFBB ACC to LECM ACC..... | 10 |
| 4. Contributions | 11 |
| 5. Changelog..... | 11 |

1. Purpose

The purpose of this Letter of Agreement (LoA) is to define the coordination procedures to be applied between **Madrid ACC** and **Brest ACC** when providing Air Traffic Services (ATS) under IFR or VFR flight rules.

The content of the agreement is approved by the concerned ATC Operations Department and FIR Chiefs and its application is mandatory for all IVAO members providing ATS within an active position concerned by this LoA.

2. Areas of Responsibility

2.1. Airspace structure and classification within the Area of Common Interest

2.1.1. LECM FIR/UIR

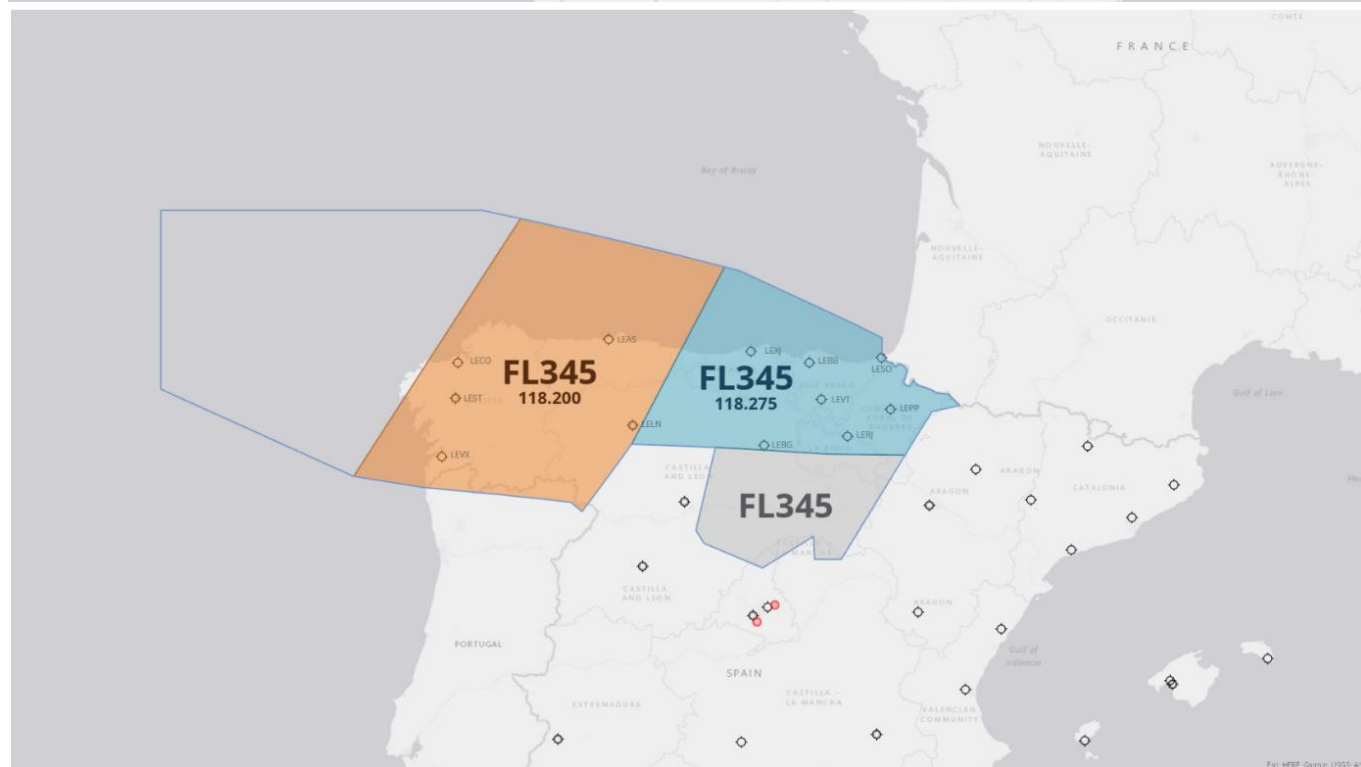
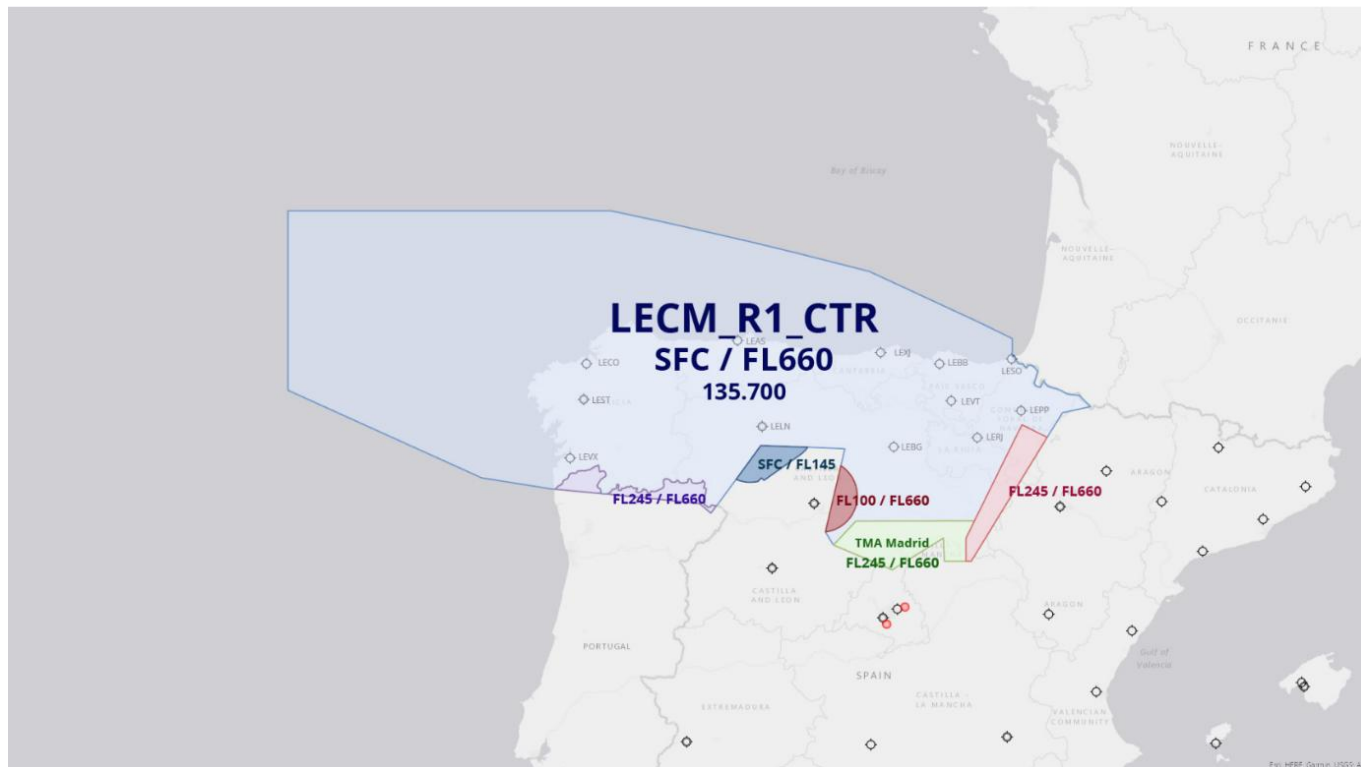
| Area | Vertical Limits | Airspace Classification |
|------|-----------------|-------------------------|
| UIR | Above FL660 | G |
| | FL195/FL660 | C |
| FIR | FL145/FL195 | C |
| | AGL-AMSL/FL145 | G (D in airway) |

2.1.2. LFRR FIR/UIR

| Area | Vertical Limits | Airspace Classification |
|------|-----------------|-------------------------|
| UIR | Above FL660 | G |
| | FL195/FL660 | C |
| FIR | FL115/FL195 | D |
| | AGL-AMSL/FL115 | G (E in airway) |

2.2. Sectorisation within the Area of Common Interest

2.2.1. LECM ACC



The Madrid ACC airspace is described on the pictures above. (in the second picture, orange is SAS and blue is BLL)

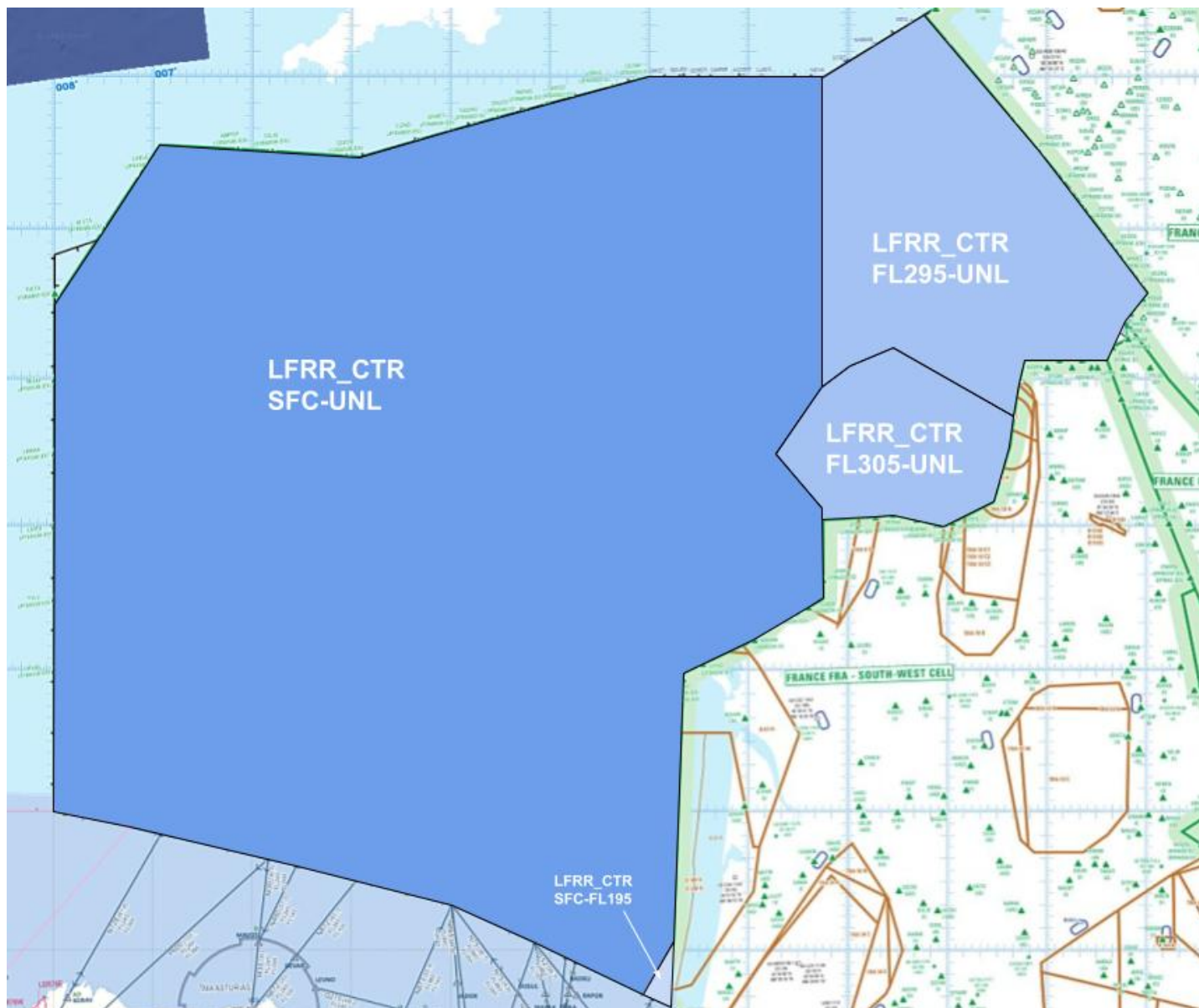
FOR SIMULATION USE ONLY - NOT VALID FOR REAL OPERATIONS

The positions concerned by this LOA are the following:

| Position | Identifier | Frequency | Remarks |
|----------------------|-------------------|------------------|---|
| Primary Sectors | | | |
| Madrid Control (R1) | LECM_R1_CTR | 135.700 | SFC-FL660 (FL345-FL660 when LECM_BLL active) |
| Madrid Control (SAS) | LECM_SAS_CTR | 118.200 | SFC-FL345 |
| Madrid Control (BLL) | LECM_BLL_CTR | 118.275 | SFC-FL345 |

FOR SIMULATION USE ONLY - NOT VALID FOR REAL OPERATIONS

2.2.2. LFRR ACC



The Brest ACC airspace is described on the picture above.

The positions concerned by this LOA are the following:

| Position | Identifier | Frequency | Remarks |
|-----------------|------------|-----------|---------|
| Primary Sectors | | | |
| Brest Control | LFRR_CTR | 132.830 | |

FOR SIMULATION USE ONLY - NOT VALID FOR REAL OPERATIONS

2.3. Special Areas within the Area of Common Interest

2.3.1. LF-D32/LF-D33



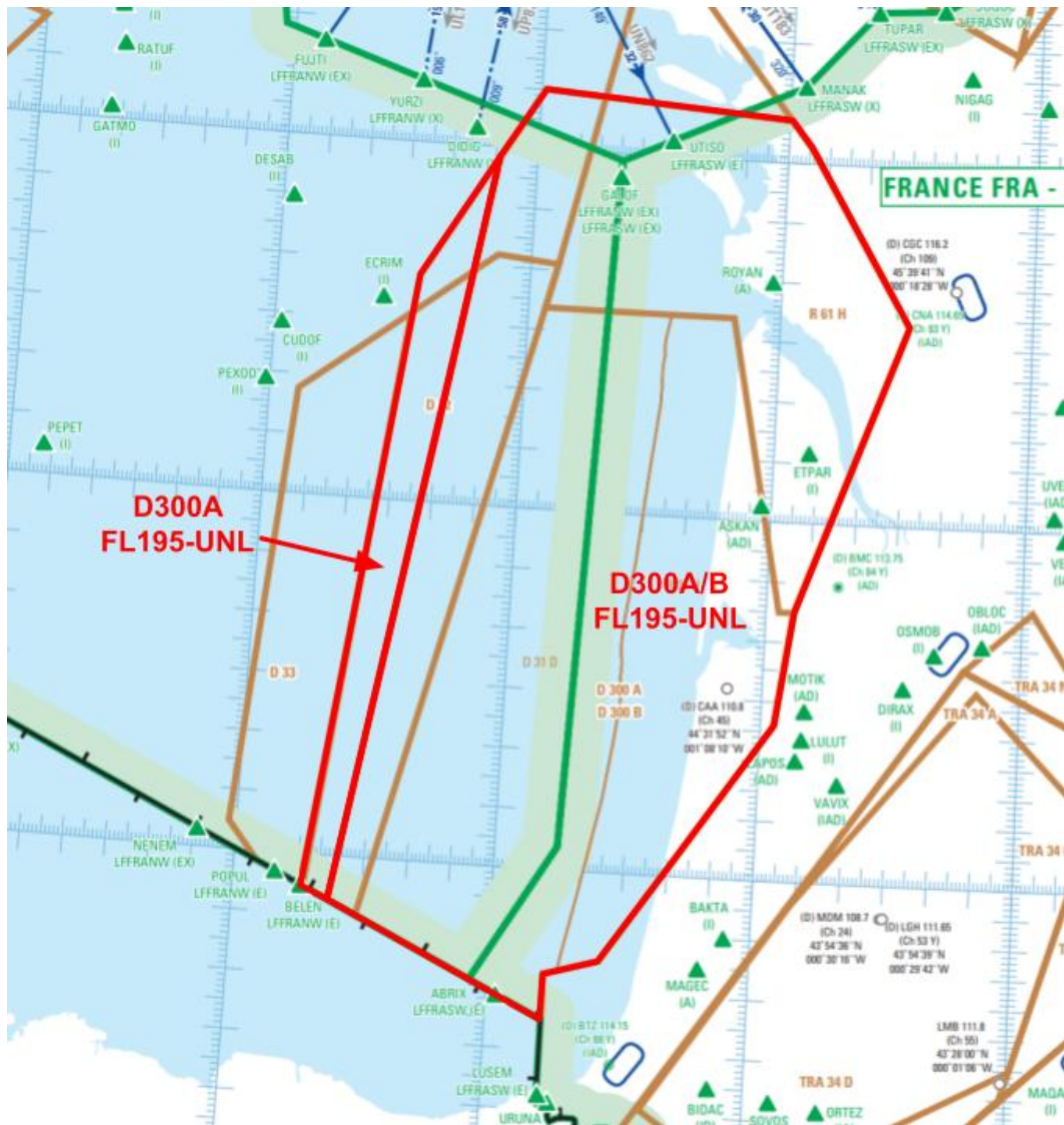
Brest ACC shall inform Madrid ACC of the activity of these areas and the availability of BELEN and POPUL flows.

When D32 is active, flow via BELEN is no longer available, Madrid ACC shall reroute traffics via POPUL.

When D33 is active, BELEN and POPUL are no longer available, Madrid ACC shall reroute traffics via NENEM.

FOR SIMULATION USE ONLY - NOT VALID FOR REAL OPERATIONS

2.3.2. LF-D300A/B



Brest ACC shall inform Madrid ACC of the activity of these areas and the availability of BELEN flow.
 When D300A is active, flow via BELEN is no longer available, Madrid ACC shall reroute traffics via POPUL.

FOR SIMULATION USE ONLY - NOT VALID FOR REAL OPERATIONS

3. Procedures for Coordination

3.1. General Conditions for Acceptance of Flights

Coordination of flights shall take place by reference to the COP for the relevant route and in accordance with the appropriate flight levels specified in paragraph 3.2.

Flights shall be considered to be maintaining the coordinated flight level at the transfer of control point unless climb or descent conditions have been clearly stated by either the LoA conditions or a text/verbal coordination.

If the accepting ATS unit cannot accept a flight offered in accordance with the conditions specified in the LoA, it shall clearly indicate its inability and specify the conditions under which the flight will be accepted.

For any proposed deviation from the conditions specified in 3.2 (COP, route, FL), the transferring unit shall initiate an approval request.

Traffics shall be transferred as soon as possible, clear of any conflicting traffic, not later than 10Nm before the boundary.

Silent Radar Handover are possible with a minimal separation of 10NM and required if the longitudinal separation is less than 20NM. In that case, the transferring ATS unit shall assign speeds/Mach numbers to both aircraft, the speed of the number one needs to be greater or equal to the speed of the second. Pilots shall report their assigned speed to the receiving ATS unit at the first contact.

3.2. ATS-Routes, DCTs, Co-Ordination Points and Level Allocation

3.2.1. Flights from LECM ACC to LFRR ACC

| ATS-Route or DCT | COP | Flight Level Allocation | Special Conditions | Reference |
|--|-------|-------------------------|------------------------------|-----------|
| Free Route Airspace Or ATS Routes AIP ENR 3.1. | SOSOV | Even | | |
| | KORUL | Even | | |
| | | FL300 | DEP LEAS | 3.2.1.2. |
| | LOTEE | Even | | |
| | | FL240 | DEP LEAS | 3.2.1.2. |
| | DELOG | Even | | 3.2.1.2. |
| | NENEM | FL260 | DEP LEPP LERJ | 3.2.1.1. |
| | POPUL | FL200 | DEP LEBB LEXJ LEVT LEBG LFBZ | 3.2.1.1. |
| | BELEN | | | 3.2.1.1. |

3.2.1.1. Traffic via NENEM/POPUL/BELEN and activation of LF-D32/LF-D33/LF-D300A/LF-D300B

When LF-D32 or LF-D300A is active, BELEN is not available, traffic is rerouted by Madrid ACC via POPUL

When LF-D33 is active, LF-D32 is active as well, BELEN and POPUL are no longer available, traffic is rerouted by Madrid ACC via NENEM

Brest ACC shall inform Madrid ACC of these areas' activity and the routes availability

3.2.1.2.

Traffic with DEP LEAS LEPP LERJ LEBB LEXJ LEVT LEBG LFBZ is released for further climb.

3.2.2. Flights from LFBB ACC to LECM ACC

| ATS-Route or DCT | COP | Flight Level Allocation | Special Conditions | Reference |
|--|------------|--------------------------------|------------------------------|------------------|
| Free Route Airspace Or ATS Routes AIP ENR 3.1. | SOSOV | Odd | | |
| | KORUL | Odd | | |
| | LOTEE | Odd | | |
| | BALDA | Odd | | |
| | ATLEN | FL250 | ARR LEAS | 3.2.2.1. |
| | BAKUP | Odd | | |
| | DELOG | Odd | | |
| | NENEM | FL270 | ARR LEPP LERJ | 3.2.2.1. |
| | | FL210 | ARR LEBB LEXJ LEVT LEBG LFBZ | 3.2.2.1. |

3.2.2.1.

Traffic with ARR LEAS LEPP LERJ LEBB LEXJ LEVT LEBG LFBZ is released for further descent.

4. Contributions

This document has been drafted in coordination between the ATC Operations Department of Spain and France and Madrid FIR staff and Brest FIR staff.

5. Changelog

| Version | Date | Changes |
|---------|------------|---|
| V8.0 | 20/04/2026 | <ul style="list-style-type: none">- New Format- Conditions of exchange- LFRR ACC airspace |