



Letter of Agreement (LoA)

Madrid ACC (LECM) and Bordeaux ACC (LFBB)

Name: LoA-LECM-LFBB_EN

Date: April 20, 2026

Version: v7.0

Validity: Permanent

INDEX

1.	Purpose	2
2.	Areas of Responsibility.....	2
2.1.	Airspace structure and classification within the Area of Common Interest.....	2
2.1.1.	LECM FIR/UIR	2
2.1.2.	LFBB FIR/UIR	2
2.2.	Sectorisation within the Area of Common Interest.....	3
2.2.1.	LECM ACC.....	3
2.2.2.	LESO TWR.....	5
2.2.3.	LFBB ACC	6
2.2.4.	LFBP APP	7
2.2.5.	LFBZ APP	8
2.3.	Special Areas within the Area of Common Interest	9
2.3.1.	LTA Pyrenees	9
2.3.2.	Zona Deportiva Pirineos.....	9
2.3.3.	LE-D47A/B.....	10
2.3.4.	LF-D31D.....	10
2.3.5.	LF-TRA34.....	11
2.3.6.	Area delegated to LESO TWR.....	11
3.	Procedures for Coordination.....	12
3.1.	General Conditions for Acceptance of Flights	12
3.2.	ATS-Routes, DCTs, Co-Ordination Points and Level Allocation.....	13
3.2.1.	Flights from LECM ACC to LFBB ACC	13
3.2.2.	Flights from LFBB ACC to LECM ACC.....	14
3.2.3.	Flights from LECM ACC to LFBZ APP	15
3.2.4.	Flights from LFBZ APP to LECM ACC.....	15
3.2.5.	Flights from LESO TWR to LFBZ APP	15
3.2.6.	Flights from LFBZ APP to LESO TWR	15
4.	Contributions	16
5.	Changelog.....	16

1. Purpose

The purpose of this Letter of Agreement (LoA) is to define the coordination procedures to be applied between **Madrid ACC** and **Bordeaux ACC** when providing Air Traffic Services (ATS) under IFR or VFR flight rules.

The content of the agreement is approved by the concerned ATC Operations Department and FIR Chiefs and its application is mandatory for all IVAO members providing ATS within an active position concerned by this LoA.

2. Areas of Responsibility

2.1. Airspace structure and classification within the Area of Common Interest

2.1.1. LECM FIR/UIR

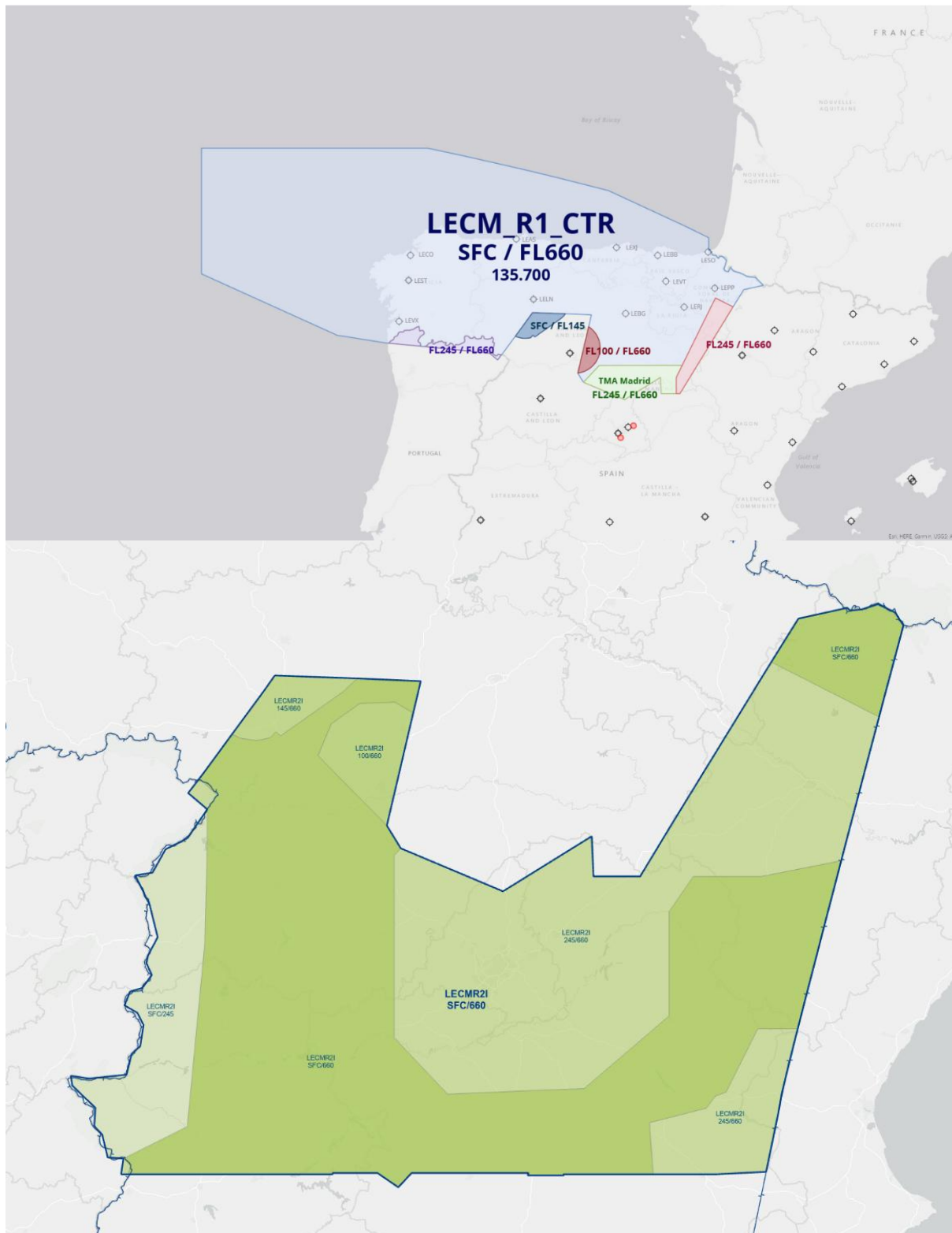
Area	Vertical Limits	Airspace Classification
UIR	Above FL660	G
	FL195/FL660	C
FIR	FL145/FL195	C
	FL145/FL195	Zona Deportiva Pirineos = E
	AGL-AMSL/FL145	G (D in airway)

2.1.2. LFBB FIR/UIR

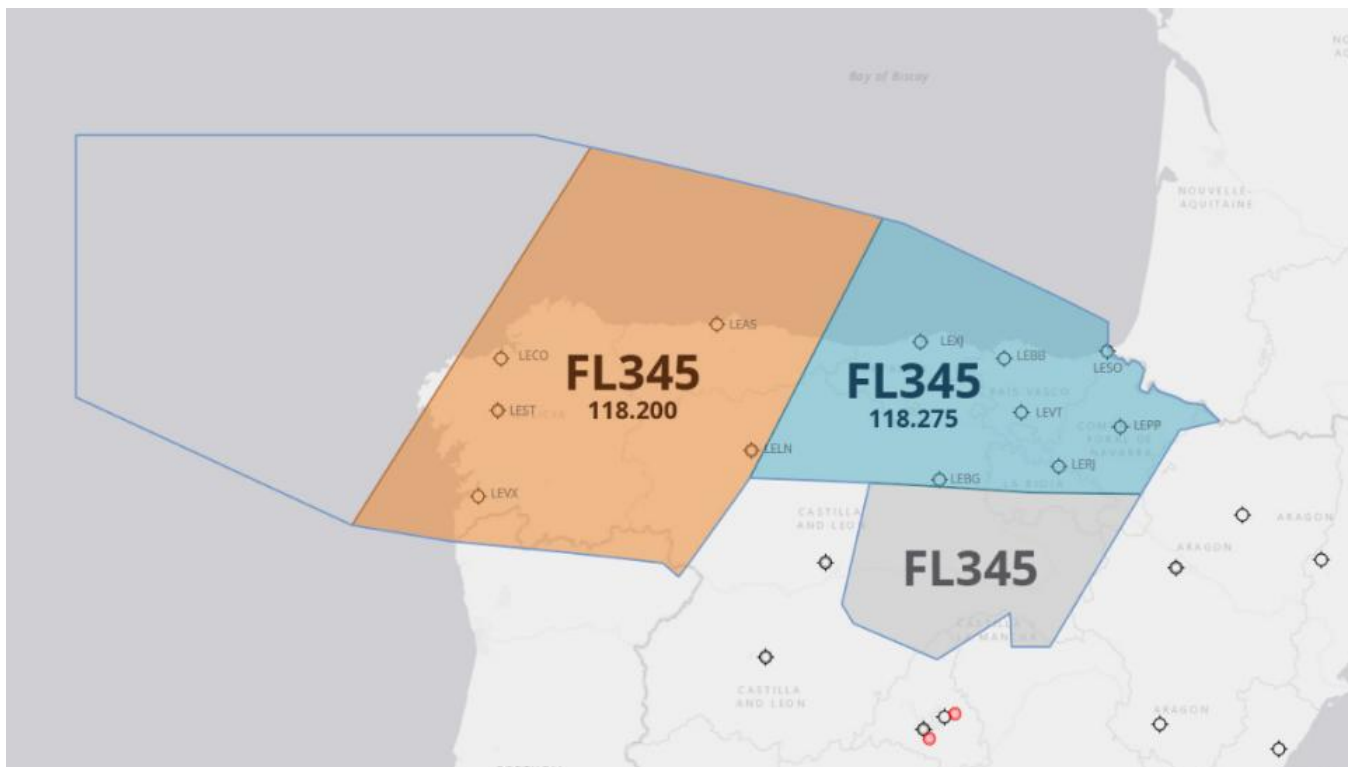
Area	Vertical Limits	Airspace Classification
UIR	Above FL660	G
	FL195/FL660	C
FIR	FL115/FL195	D except in LTA Pyrenees (E)
	AGL-AMSL/FL115	G outside other classified airspace

2.2. Sectorisation within the Area of Common Interest

2.2.1. LECM ACC



FOR SIMULATION USE ONLY - NOT VALID FOR REAL OPERATIONS

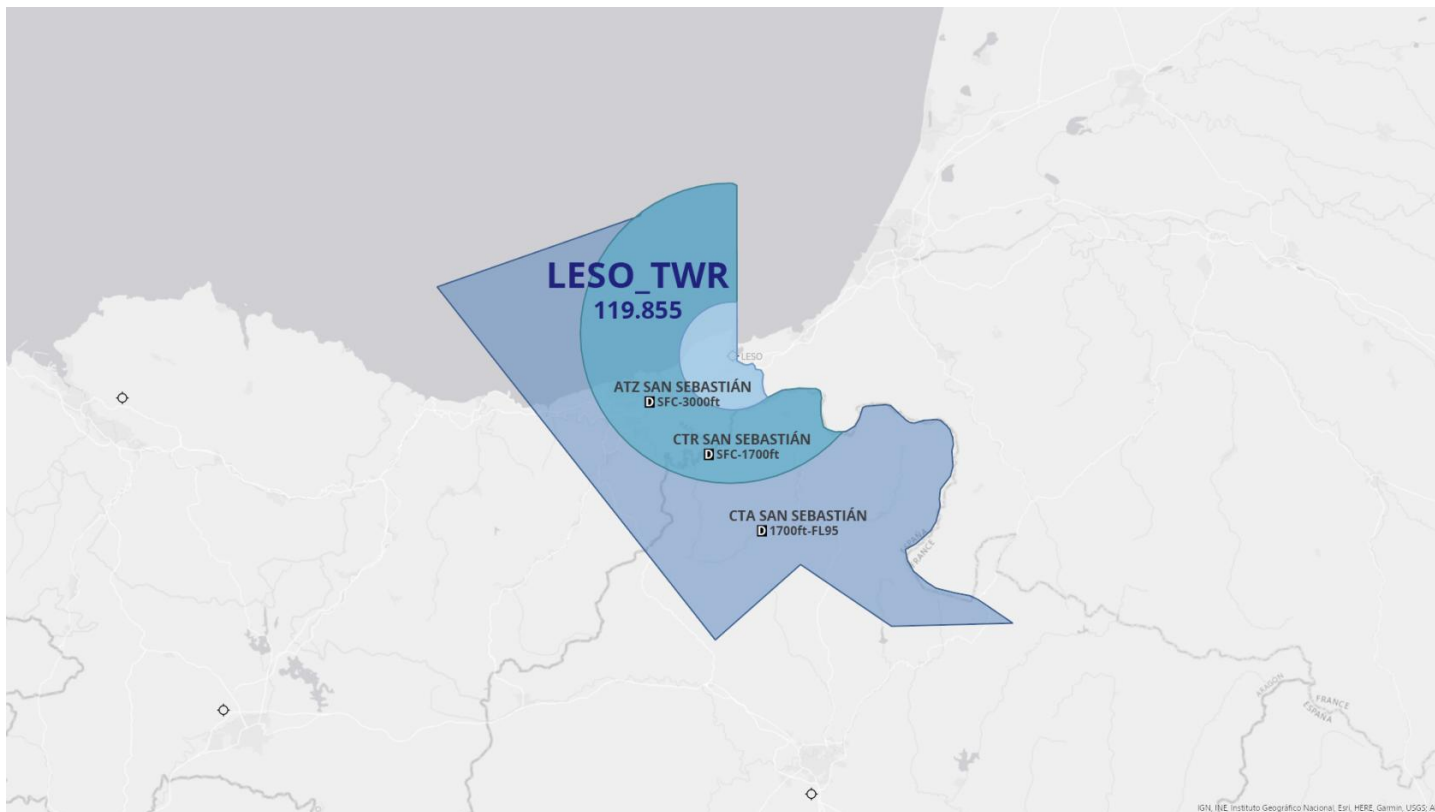


The Madrid ACC airspace is described on the pictures above. (from top to bottom: R1, R2, BLL in blue)
 The positions concerned by this LOA are the following:

Position	Identifier	Frequency	Remarks
Primary Sectors			
Madrid Control (R1)	LECM_R1_CTR	135.700	SFC-FL660 FL345-FL660 when BLL is active
Madrid Control (R2)	LECM_R2_CTR	133.755	SFC-FL660
Madrid Control (BLL)	LECM_BLL_CTR	118.275	SFC-FL345

FOR SIMULATION USE ONLY - NOT VALID FOR REAL OPERATIONS

2.2.2. LESO TWR



There is only one primary position in charge of San Sebastian TWR airspace:

Position	Identifier	Frequency	Remarks
Primary Sectors			
San Sebastian Tower	LESO_TWR	119.855	

FOR SIMULATION USE ONLY - NOT VALID FOR REAL OPERATIONS

2.2.3. LFBB ACC



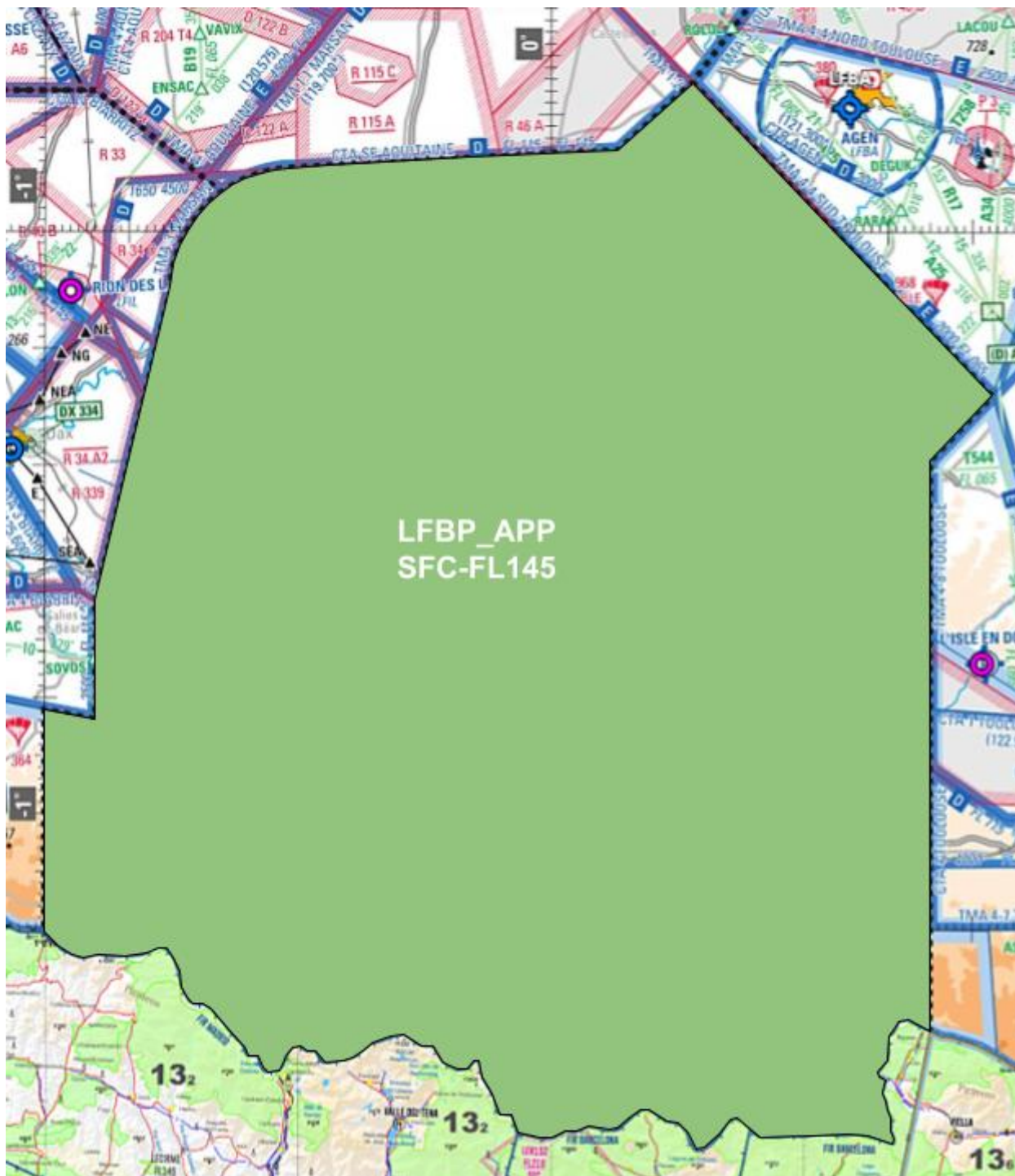
The Bordeaux ACC airspace is described on the picture above.

The positions concerned by this LOA are the following:

Position	Identifier	Frequency	Remarks
Primary Sectors			
Bordeaux Control	LFBB_CTR	130.230	
Bordeaux Control (S)	LFBB_S_CTR	126.130	

If LFBB_S_CTR is open, this sector is the only interlocutor to Madrid ACC.

2.2.4. LFBP APP



There is only one primary position in charge of Pyrenees APP airspace:

Position	Identifier	Frequency	Remarks
Primary Sectors			
Pyrenees Approach	LFBP_APP	128.800	

FOR SIMULATION USE ONLY - NOT VALID FOR REAL OPERATIONS

2.2.5. LFBZ APP



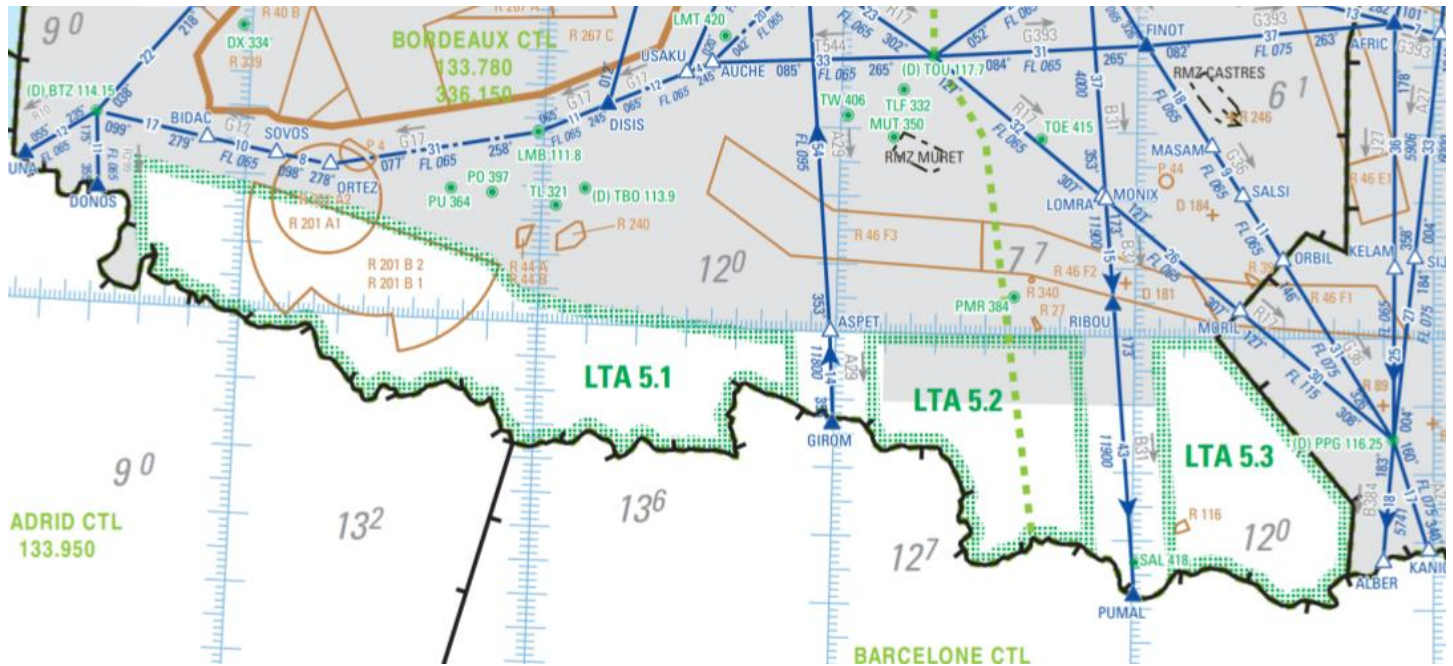
There is only one primary position in charge of Biarritz APP airspace:

Position	Identifier	Frequency	Remarks
Primary Sectors			
Biarritz Approach	LFBZ_APP	125.600	

FOR SIMULATION USE ONLY - NOT VALID FOR REAL OPERATIONS

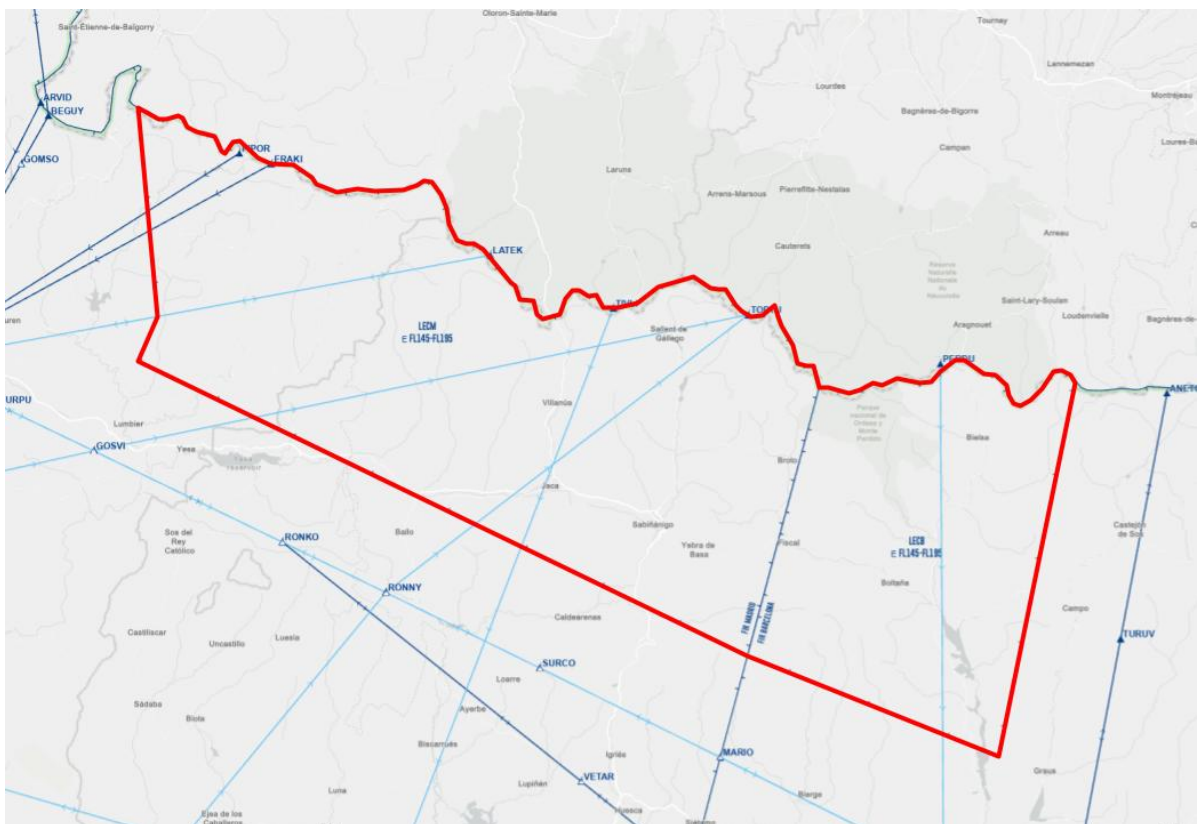
2.3. Special Areas within the Area of Common Interest

2.3.1. LTA Pyrenees



LTA Pyrenees (LTA 5.1, 5.2 and 5.3) is class E airspace from 3000ft AGL to FL195.

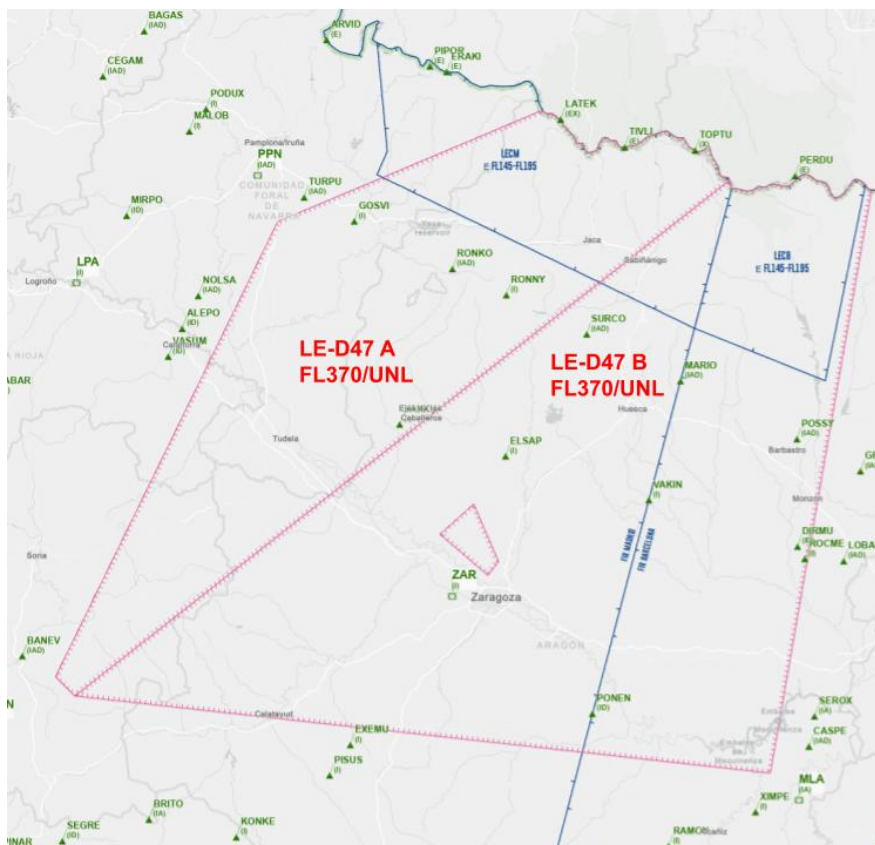
2.3.2. Zona Deportiva Pirineos



This airspace is class E form FL145 to FL195.

FOR SIMULATION USE ONLY - NOT VALID FOR REAL OPERATIONS

2.3.3. LE-D47A/B



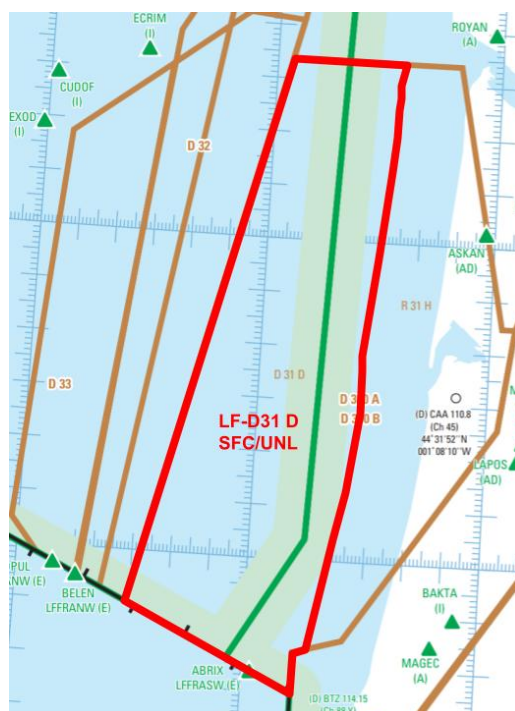
Madrid ACC shall inform Bordeaux ACC about the activity of this area.

Madrid ACC shall also inform Bordeaux about the availability of flows LATEK-PPN and LPA-GOSVI-TOPTU (either both available all levels or both closed FL355/UNL). If these flows are closed FL355/UNL, Bordeaux ACC shall deliver flights with RFL>FL355 at FL350.

2.3.4. LF-D31D

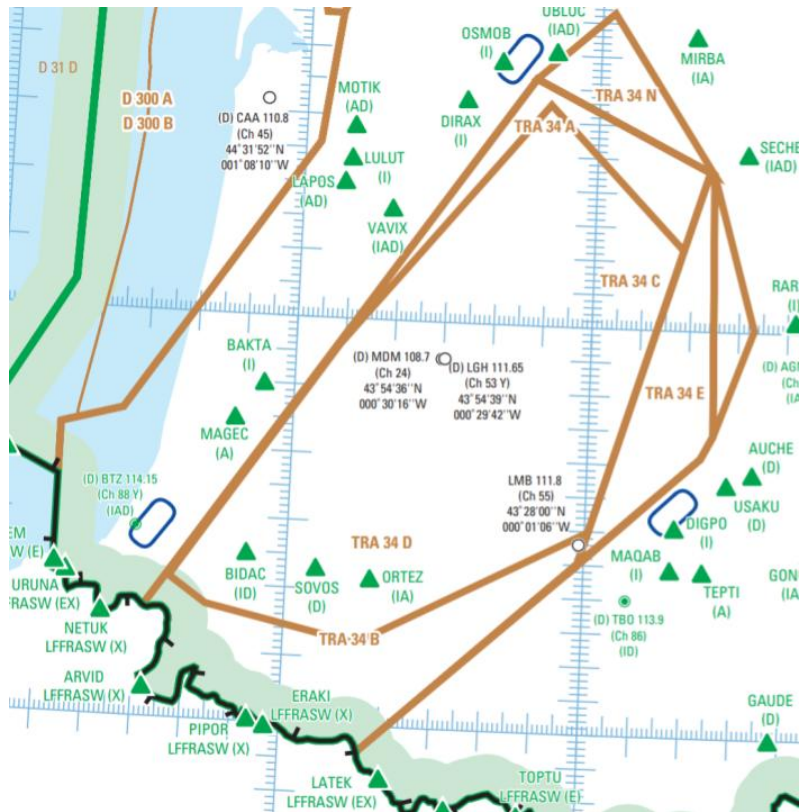
Bordeaux ACC shall inform Madrid ACC about the activity of this area.

When the area is active, the flow ABRIX DCT CNA is no longer available, traffics planned via ABRIX DCT CNA shall be rerouted by Madrid ACC via LUSEM DCT CNA.



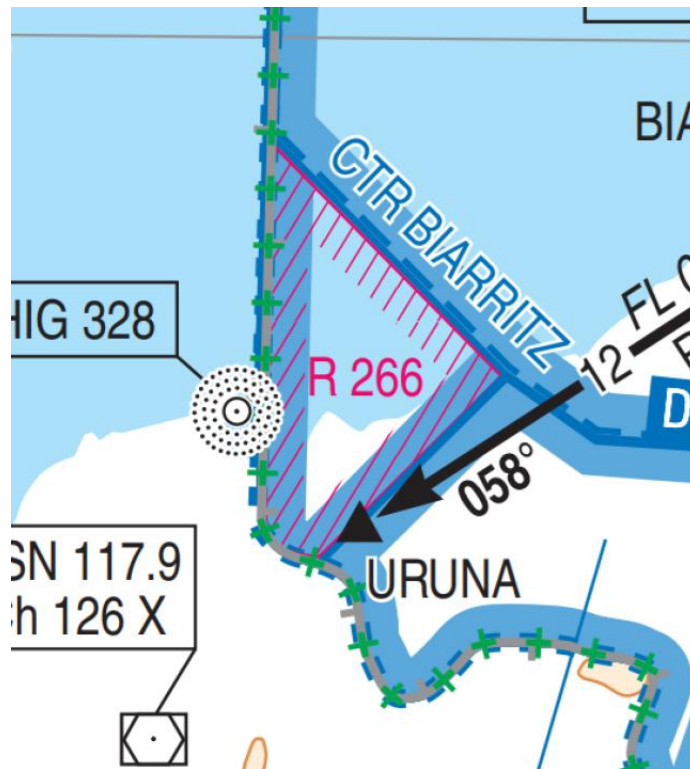
FOR SIMULATION USE ONLY - NOT VALID FOR REAL OPERATIONS

2.3.5. LF-TRA34



In case of activity of this area, Bordeaux ACC shall transfer traffics planned via PPN either on course to NETUK or LATEK.

2.3.6. Area delegated to LESO TWR



LF-R266 is an area defined from SFC to 2000ft AMSL. This area is delegated to LESO_TWR when the position is active.

FOR SIMULATION USE ONLY - NOT VALID FOR REAL OPERATIONS

3. Procedures for Coordination

3.1. General Conditions for Acceptance of Flights

Coordination of flights shall take place by reference to the COP for the relevant route and in accordance with the appropriate flight levels specified in paragraph 3.2.

Flights shall be considered to be maintaining the coordinated flight level at the transfer of control point unless climb or descent conditions have been clearly stated by either the LoA conditions or a text/verbal coordination.

If the accepting ATS unit cannot accept a flight offered in accordance with the conditions specified in the LoA, it shall clearly indicate its inability and specify the conditions under which the flight will be accepted.

For any proposed deviation from the conditions specified in 3.2 (COP, route, FL), the transferring unit shall initiate an approval request.

Traffics shall be transferred as soon as possible, clear of any conflicting traffic, not later than 10Nm before the boundary.

Silent Radar Handover are possible with a minimal separation of 10Nm and required if the longitudinal separation is less than 20Nm. In that case, the transferring ATS unit shall assign speeds/Mach numbers to both aircraft, the speed of the number one needs to be greater or equal to the speed of the second. Pilots shall report their assigned speed to the receiving ATS unit at the first contact.

3.2. ATS-Routes, DCTs, Co-Ordination Points and Level Allocation

3.2.1. Flights from LECM ACC to LFBB ACC

ATS-Route or DCT	COP	Flight Level Allocation	Special Conditions	Reference
Free Route Airspace Or ATS Routes AIP ENR 3.1.	ABRIX	Even		
	DONOS	Even		3.2.1.1.
		FL160	DEP LEPP LERJ	
	URUNA	Even		3.2.1.1.
		FL320	DEP LEZG	
		FL280	ARR LFBD LFBE LFBC	
		FL260	DEP LEXJ	
		FL240	ARR LFBT LFBP LFBM	
		FL220	DEP LEVT LEBB LEBG	
		FL160	DEP LEPP LERJ	
	LUSEM	Even		3.2.1.1.
		FL320	DEP LEZG	
		FL260	DEP LEXJ	
		FL220	DEP LEVT LEBB LEBG	
	LATEK	Even		
		FL300	DEP LEVT LEBB LEBG LEXJ	
	TOPTU	Even		
FL280		DEP LEZG ARR LFBO LFMK LFCR LFBA		

3.2.1.1.
Madrid ACC shall consider URUNA, LUSEM and DONOS as a single flow and provide longitudinal separation between traffics at same level on these tracks.

3.2.2. Flights from LFBB ACC to LECM ACC

ATS-Route or DCT	COP	Flight Level Allocation	Special Conditions	Reference	
Free Route Airspace Or ATS Routes AIP ENR 3.1.	URUNA	Odd			
		FL350	ARR LEVD		
		FL330	DEP LFBD LFBE LFBC LFBP LFBT		
		FL270	ARR LEXJ		
		FL230	ARR LEBB LEVT LEBG LERJ		
		FL170	ARR LEPP		
	DONOS	Odd			
		FL170	ARR LEPP		
	NETUK	Odd			
		FL330	ARR LEZG DEP LFBD LFBE LFBC		
	ARVID	Odd			
		FL330	ARR LEZG		
	PIPOR	Odd			
		FL270	ARR LEBB LEVT LEBG LEXJ		
	ERAKI	Odd			
		FL270	ARR LEBB LEVT LEBG LEXJ		
	LATEK	Odd			
		FL330	DEP LFBO		
		FL270	ARR LEBB LEVT LEBG LEXJ		
	TIVLI	Odd			
		FL310	ARR LEZG DEP LFBO LFMK		
FL230		ARR LEHC			

FOR SIMULATION USE ONLY - NOT VALID FOR REAL OPERATIONS

3.2.3. Flights from LECM ACC to LFBZ APP

ATS-Route or DCT	COP	Flight Level Allocation	Special Conditions	Reference
M299, L176, M190	DONOS SSN	Even		
		FL120	ARR LFBZ	3.2.3.1.
Y129, P181	URUNA	Even		

3.2.3.1.

Traffic with ARR LFBZ is released for descent to FL100.

3.2.4. Flights from LFBZ APP to LECM ACC

ATS-Route or DCT	COP	Flight Level Allocation	Special Conditions	Reference
M299, P181, Y129	DONOS URUNA	Odd		
LFBZ SID	DONOS SSN	FL110	DEP LFBZ	3.2.4.1.

3.2.4.1.

Traffic with DEP LFBZ is released for climb to FL140 in LFBZ airspace.

3.2.5. Flights from LESO TWR to LFBZ APP

San Sebastian TWR shall request a release to Biarritz APP for all IFR flights departing RWY 04. This release is only valid 3 minutes, after this delay, if the traffic has not taken off, San Sebastian TWR shall request a new release.

San Sebastian TWR shall request initial IFR clearance to Biarritz APP for each departure RWY 04, this clearance can be either: standard SID or RWY heading or radial 030 outbound of SSN. Departures from RWY 04 shall use SIDs whenever possible (SIDs are preferred over RWY heading or radial outbound). The initial altitude must be above 4000ft.

For departure RWY 22 via BTZ SID, San Sebastian TWR shall request the transfer FL to Biarritz APP 3 minutes before departure.

3.2.6. Flights from LFBZ APP to LESO TWR

Biarritz APP shall coordinate all traffic interfering with San Sebastian TWR area of responsibility.

4. Contributions

This document has been drafted in coordination between the ATC Operations Department of Spain and France and Madrid FIR staff and Bordeaux FIR staff.

5. Changelog

Version	Date	Changes
V7.0	20/04/2026	<ul style="list-style-type: none">- New Format- Conditions of exchange- LFBB ACC airspace