



## Letter of Agreement (LoA)

---

**Barcelona ACC (LECB) and Bordeaux ACC (LFBB)**

Name: LoA-LECB-LFBB\_EN

Date: April 20, 2026

Version: v7.0

Validity: Permanent

# INDEX

1. Purpose .....	2
2. Areas of Responsibility.....	2
2.1. Airspace structure and classification within the Area of Common Interest.....	2
2.1.1. LECB FIR/UIR.....	2
2.1.2. LFBB FIR/UIR .....	2
2.2. Sectorisation within the Area of Common Interest.....	3
2.2.1. LECB ACC.....	3
2.2.3. LFBB ACC .....	4
2.2.3. LEBL APP .....	5
2.2.4. LFBO APP .....	6
2.3. Special Areas within the Area of Common Interest .....	7
2.3.1. LTA Pyrenees .....	7
2.3.2. Zona Deportiva Pirineos.....	7
3. Procedures for Coordination .....	8
3.1. General Conditions for Acceptance of Flights .....	8
3.2. ATS-Routes, DCTs, Co-Ordination Points and Level Allocation .....	9
3.2.1. Flights from LECB ACC to LFBB ACC .....	9
3.2.2. Flights from LFBB ACC to LECB ACC .....	10
3.2.3. Flights from LECB ACC to LFBO APP .....	11
3.2.4. Flights from LFBO APP to LECB ACC.....	11
4. Contributions .....	12
5. Changelog.....	12

## 1. Purpose

The purpose of this Letter of Agreement (LoA) is to define the coordination procedures to be applied between **Barcelona ACC** and **Bordeaux ACC** when providing Air Traffic Services (ATS) under IFR or VFR flight rules.

The content of the agreement is approved by the concerned ATC Operations Department and FIR Chiefs and its application is mandatory for all IVAO members providing ATS within an active position concerned by this LoA.

## 2. Areas of Responsibility

### 2.1. Airspace structure and classification within the Area of Common Interest

#### 2.1.1. LECB FIR/UIR

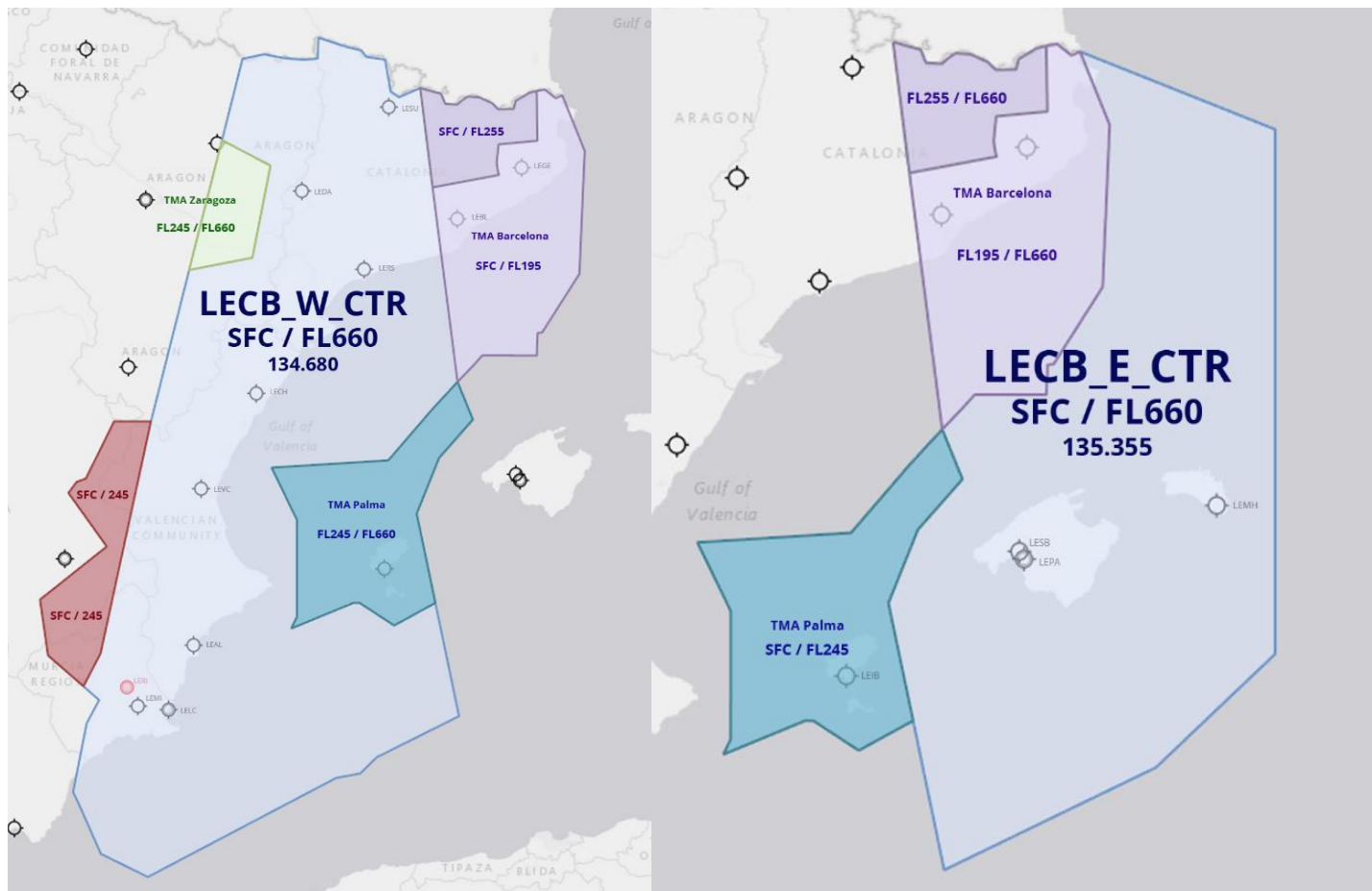
Area	Vertical Limits	Airspace Classification
UIR	Above FL660	G
	FL195/FL660	C
FIR	FL145/FL195	C
	FL145/FL195	Zona Deportiva Pirineos = E
	AGL-AMSL/FL145	G (D in airway)

#### 2.1.2. LFBB FIR/UIR

Area	Vertical Limits	Airspace Classification
UIR	Above FL660	G
	FL195/FL660	C
FIR	FL115/FL195	D except in LTA Pyrenees (E)
	AGL-AMSL/FL115	G outside other classified airspace

## 2.2. Sectorisation within the Area of Common Interest

### 2.2.1. LECB ACC



The Barcelona ACC airspace is described on the pictures above.  
 The positions concerned by this LOA are the following:

Position	Identifier	Frequency	Remarks
Primary Sectors			
Barcelona Control (E)	LECB_E_CTR	135.355	SFC-FL660
Barcelona Control (W)	LECB_W_CTR	134.680	SFC-FL660

FOR SIMULATION USE ONLY - NOT VALID FOR REAL OPERATIONS

2.2.3. LFBB ACC



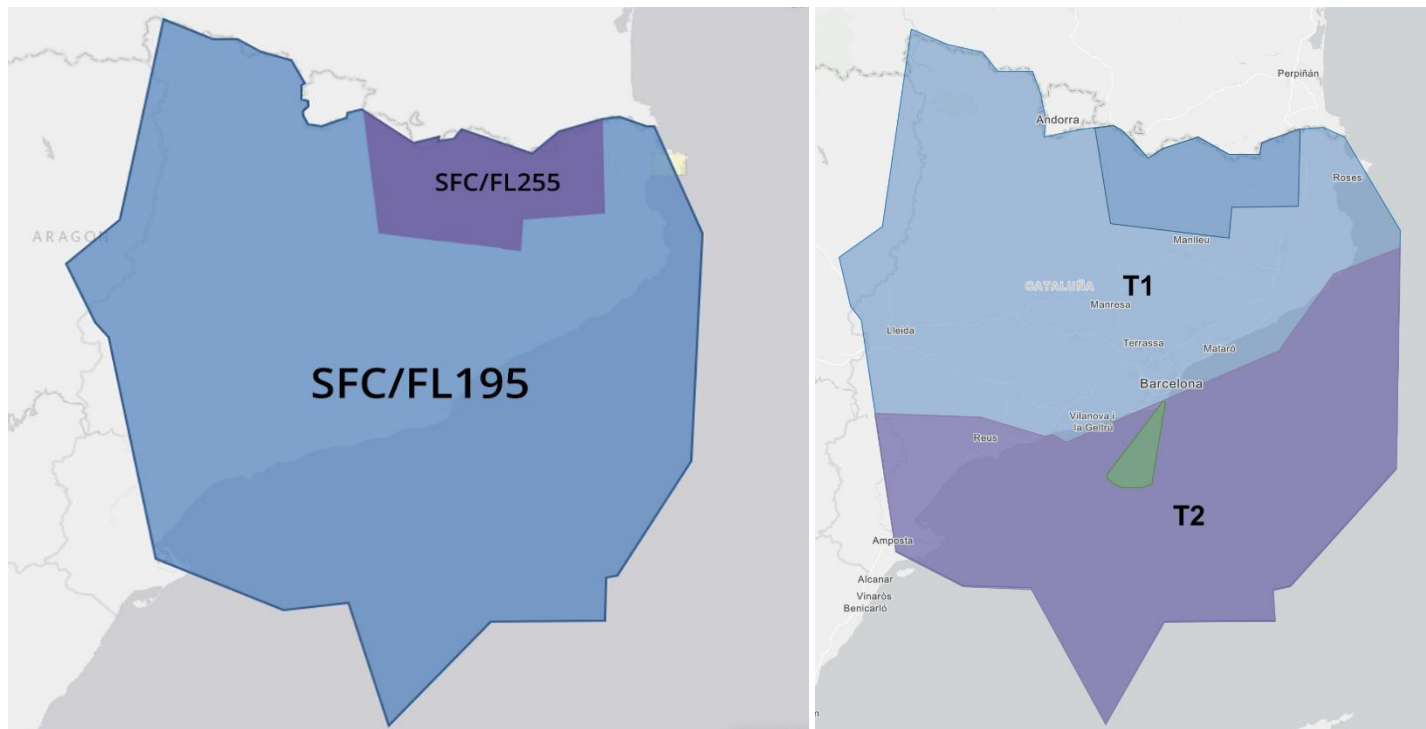
The Bordeaux ACC airspace is described on the picture above.

The positions concerned by this LOA are the following:

Position	Identifier	Frequency	Remarks
Primary Sectors			
Bordeaux Control	LFBB_CTR	130.230	
Bordeaux Control (S)	LFBB_S_CTR	126.130	

If LFBB\_S\_CTR is open, this sector is the only interlocutor to Barcelona ACC.

2.2.3. LEBL APP



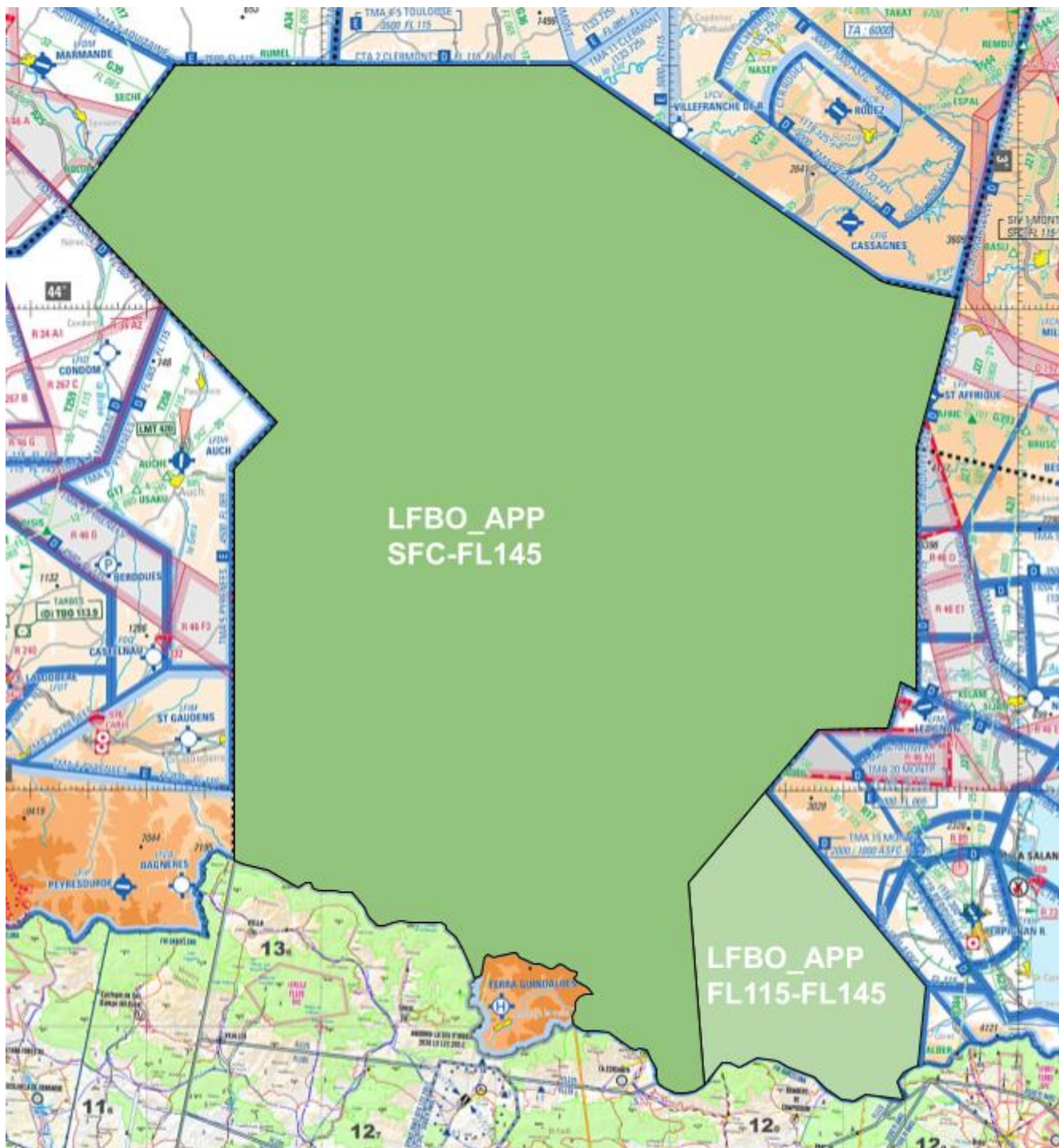
The Barcelona APP airspace is described on the pictures above.

The positions concerned by this LOA are the following:

Position	Identifier	Frequency	Remarks
Primary Sectors			
Barcelona Approach (T1)	LEBL_T1_APP	131.125	

When Barcelona APP is not online, its airspace is managed by LECB\_W\_CTR (134.680).

2.2.4. LFBO APP



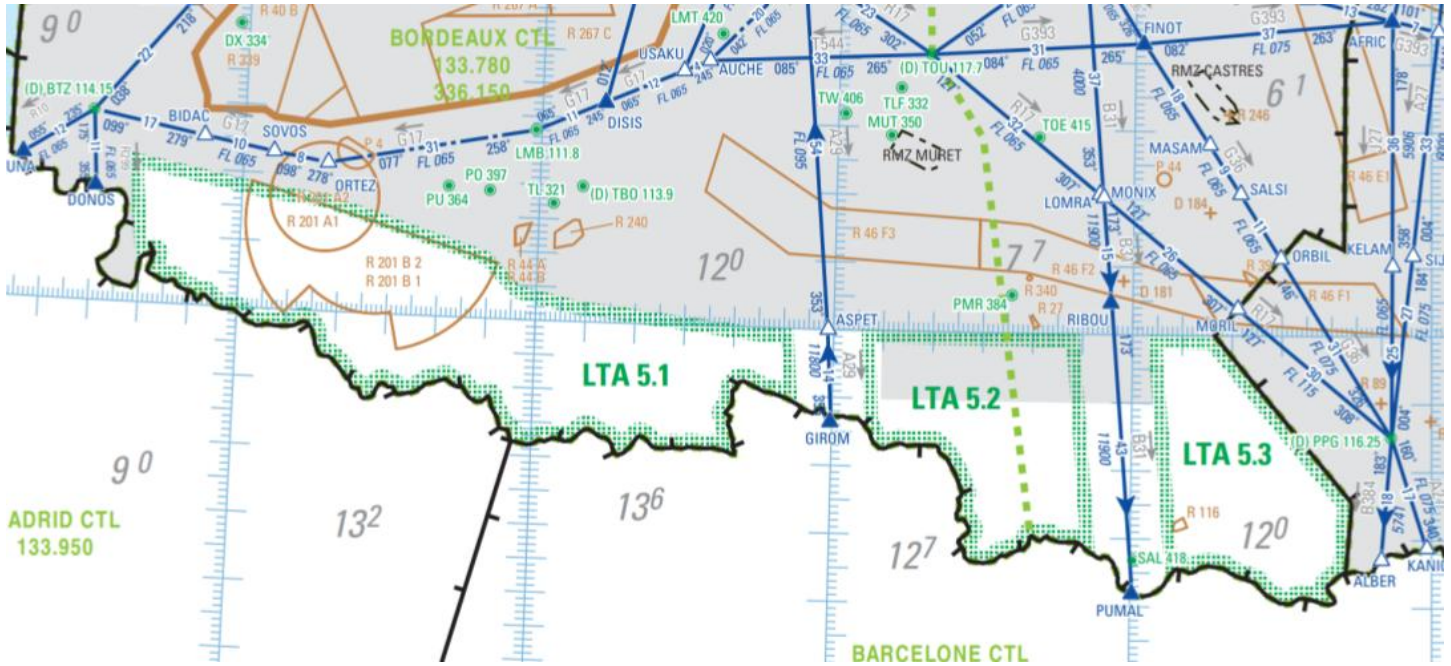
There is only one primary position in charge of Toulouse APP airspace:

Position	Identifier	Frequency	Remarks
Primary Sectors			
Toulouse Approach	LFBO_APP	129.305	

FOR SIMULATION USE ONLY - NOT VALID FOR REAL OPERATIONS

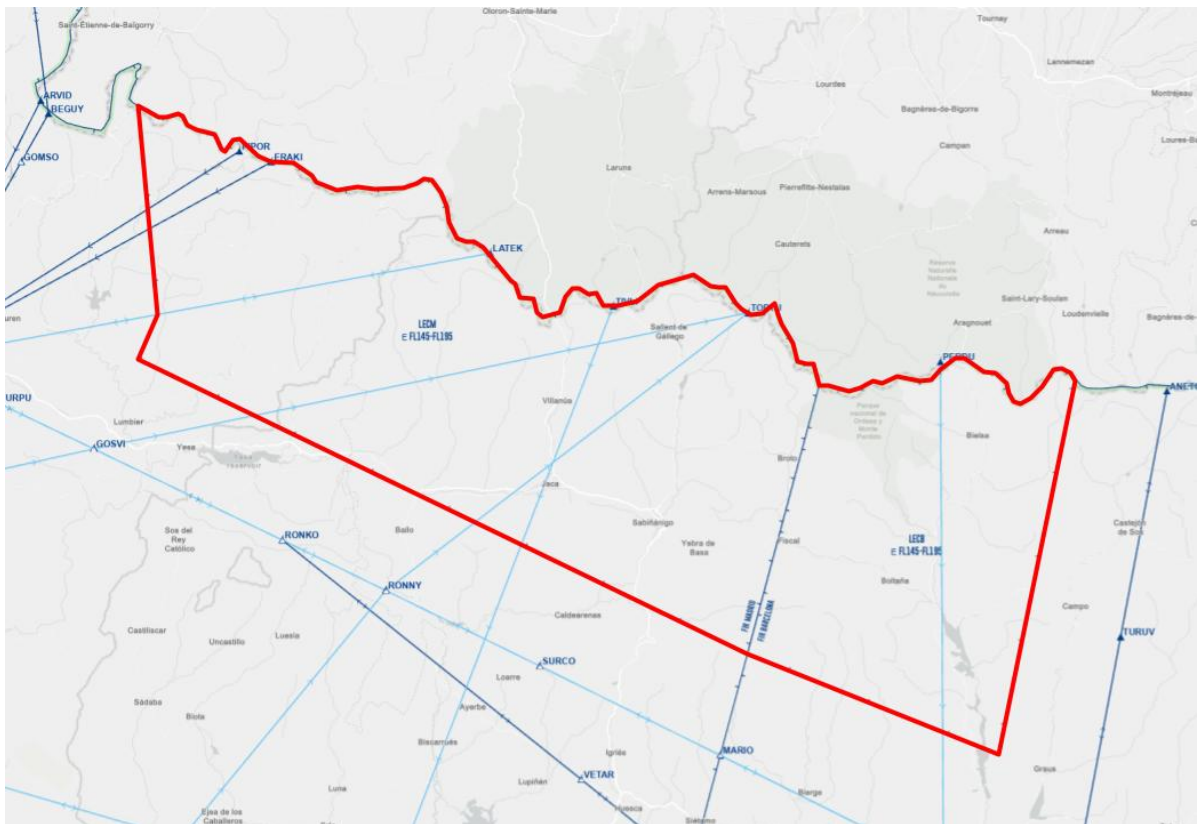
## 2.3. Special Areas within the Area of Common Interest

### 2.3.1. LTA Pyrenees



LTA Pyrenees (LTA 5.1, 5.2 and 5.3) is class E airspace from 3000ft AGL to FL195.

### 2.3.2. Zona Deportiva Pirineos



This airspace is class E form FL145 to FL195.

FOR SIMULATION USE ONLY - NOT VALID FOR REAL OPERATIONS

## 3. Procedures for Coordination

### 3.1. General Conditions for Acceptance of Flights

Coordination of flights shall take place by reference to the COP for the relevant route and in accordance with the appropriate flight levels specified in paragraph 3.2.

Flights shall be considered to be maintaining the coordinated flight level at the transfer of control point unless climb or descent conditions have been clearly stated by either the LoA conditions or a text/verbal coordination.

If the accepting ATS unit cannot accept a flight offered in accordance with the conditions specified in the LoA, it shall clearly indicate its inability and specify the conditions under which the flight will be accepted.

For any proposed deviation from the conditions specified in 3.2 (COP, route, FL), the transferring unit shall initiate an approval request.

Traffics shall be transferred as soon as possible, clear of any conflicting traffic, not later than 10Nm before the boundary.

Silent Radar Handover are possible with a minimal separation of 10Nm and required if the longitudinal separation is less than 20Nm. In that case, the transferring ATS unit shall assign speeds/Mach numbers to both aircraft, the speed of the number one needs to be greater or equal to the speed of the second. Pilots shall report their assigned speed to the receiving ATS unit at the first contact.

## 3.2. ATS-Routes, DCTs, Co-Ordination Points and Level Allocation

### 3.2.1. Flights from LECB ACC to LFBB ACC

ATS-Route or DCT	COP	Flight Level Allocation	Special Conditions	Reference
Free Route Airspace	ANETO	FL260	DEP LEZG LEHC	
	GIROM	Even		3.2.1.1.
		FL340	ARR Bordeaux Group	3.2.1.2.
		FL320	ARR LFBA	
		FL300	DEP LEBL LERS with ARR LFBA	
		FL240	DEP LEDA LESU	
		FL200	ARR Toulouse Group, Pyrenees Group	3.2.1.2.
	RUTIP	Even		
		FL300	DEP LERS	
	OLOXO	Even		
		FL320	DEP LEBL	
		FL240	DEP LESU	
	GEANT	FL200	DEP LEGE with RFL>195	
	NATPI	FL320	DEP LEBL LERS	

#### 3.2.1.1.

Flights with RFL below FL195 can enter LFBB airspace via GIROM only.

#### 3.2.1.2.

Bordeaux Group = LFBC LFBD LFBE LFBG LFBS LFBX LFCH LFCY LFDI

Pyrenees Group = LFBP LFBT LFCN LFDH

Toulouse Group = LFBF LFBO LFBR LFCI LFCCK LFCCL LFCQ LFCX LFDL LFDG LFDJ LFIR LFIT LFMG LFMK LFMW

3.2.2. Flights from LFBB ACC to LECB ACC

ATS-Route or DCT	COP	Flight Level Allocation	Special Conditions	Reference	
Free Route Airspace	PERDU	Odd		3.2.2.2.	
		FL250	ARR LEDA		
	ANETO	Odd			3.2.2.2.
		FL310	DEP LFBO LFBP LFBT LFBR LFBF LFMK		3.2.2.3.
		FL270	ARR LEZG LEHC		
		FL250	ARR LEDA LESU		
	PUMAL	Odd			3.2.2.1.
		FL310	DEP LFBO		3.2.2.3.
		FL230	ARR LEBL LERS LEDA LELL		
		FL190	ARR LESU		
	IBRAP	Odd	ARR LEPA only		
	ALBER	Odd	Only for	ARR LEPA	
		FL230		ARR LERS	
		FL210		ARR LEBL LELL LEDA LESU	
	KANIG	Odd			
		FL290	DEP LFMT		
GEANT	Odd	ARR LEMH LESL only			

## 3.2.2.1.

Flights with RFL below FL195 can enter LECB airspace via PUMAL only.

## 3.2.2.2.

Bordeaux shall consider flows via PERDU and ANETO as a single axis.

## 3.2.2.3.

Departures from LFBO LFBP LFBT LFBR LFBF LFMK unable to reach 310 at boundary will be transferred steady at a possible reached odd level.

3.2.3. Flights from LECB ACC to LFBO APP

<b>ATS-Route or DCT</b>	<b>COP</b>	<b>Flight Level Allocation</b>	<b>Special Conditions</b>	<b>Reference</b>
A29	GIROM	FL140		3.2.3.1.

3.2.3.1.  
FL140 is the only level usable whatever could be the altimeter setting. Using other levels will require a prior coordination.

3.2.4. Flights from LFBO APP to LECB ACC

<b>ATS-Route or DCT</b>	<b>COP</b>	<b>Flight Level Allocation</b>	<b>Special Conditions</b>	<b>Reference</b>
B31	PUMAL	FL130 / FL140		

## 4. Contributions

This document has been drafted in coordination between the ATC Operations Department of Spain and France and Barcelona FIR staff and Bordeaux FIR staff.

## 5. Changelog

Version	Date	Changes
V7.0	20/04/2026	<ul style="list-style-type: none"><li>- New Format</li><li>- Conditions of exchange</li><li>- LFBB ACC airspace</li></ul>